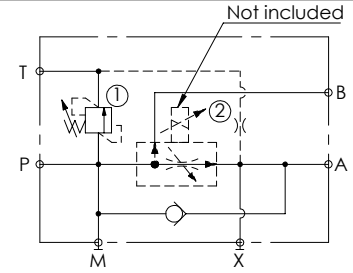
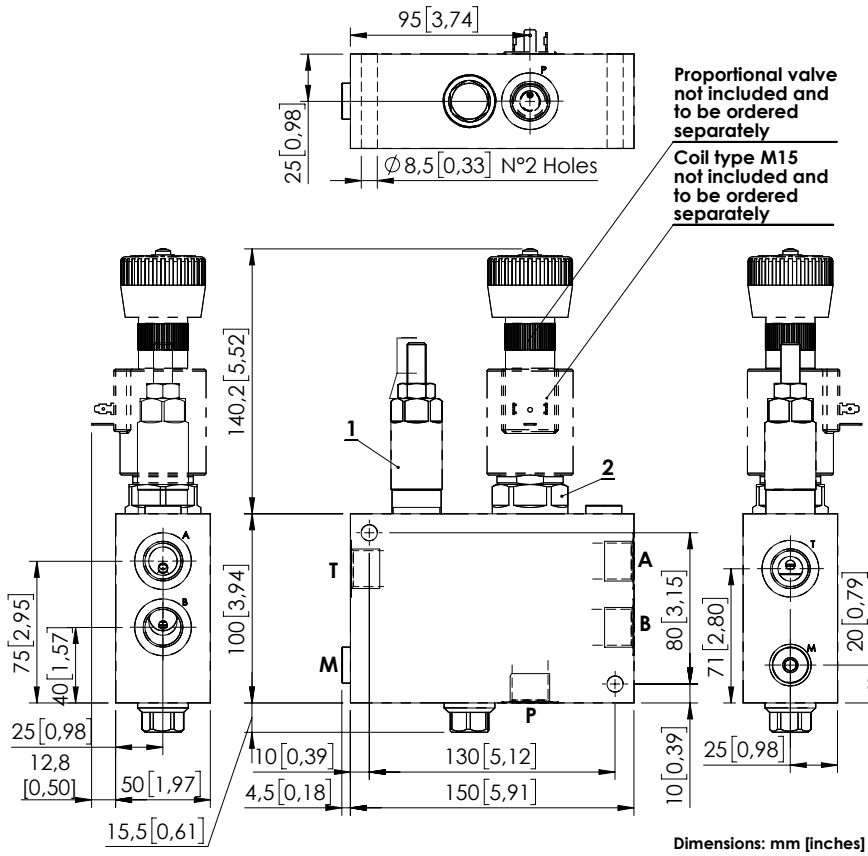


MFPC-140-TMLR

PROPORTIONAL VALVES
WITH BYPASS CHECK
WITH RELIEF



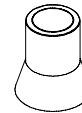
SPECIFICATIONS

Max. operating pressure:	320 bar (4600 psi)
Rated flow:	140 l/min (37 gpm)
Regulated flow:	0-80 l/min (0-21 gpm)
Manifold:	Aluminium
Weight:	2,02 kg (4,4 lbs)
Coil type:	M15
Cavity type:	SAE-16-3N
Contamination class to ISO 4406:	See technical spec.
MTTF:	150 - 1200 years: See technical spec.

NOTES

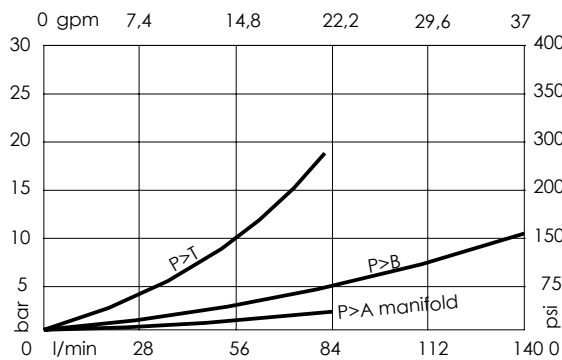
See chapter 21.00.000 for coil.
See chapter 16.00.000 for proportional valve info.
For other configurations/quick codes not available in this catalogue page please consult factory

SEALING CAP



Ordering code:
AT000021

CURVES



ORDERING CODES

Quick code	Description	Ports	Standard setting Q=5 l/min (1,3 gpm)	Adjustment range	Pressure increase
MF000351	MFPC-140-TMLR-80-G12-N320	P,A,T: G 1/2" M: G 1/4"	200 bar (2900 psi)	60-210 bar (850-3000 psi)	24 bar/turn (350 psi/turn)