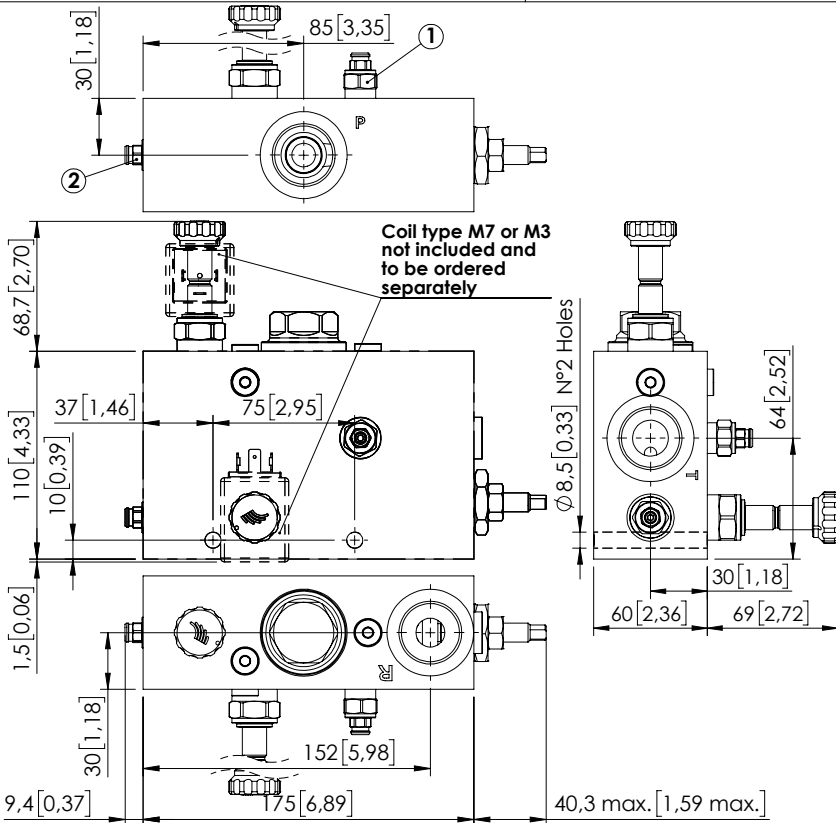


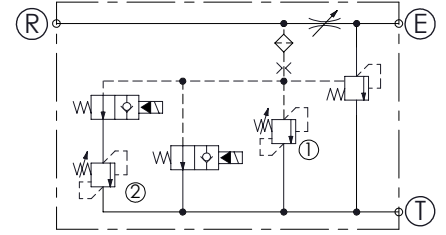
FLOW REGULATOR

MFCT-150-LHTR

3 WAYS COMPENSATED
WITH RELIEF VALVE



Dimensions: mm [inches]



SPECIFICATIONS

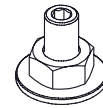
Max. operating pressure:	210 bar (3000 psi)
Rated flow:	150 l/min (40 gpm)
Regulated flow:	90 l/min (24 gpm)
Manifold:	Aluminium
Weight:	3,49 kg (7,7 lbs)
Coil type:	M7 or M3 type
Contamination class to ISO 4406:	See technical spec.
MTTFd:	150 - 1200 years: See technical spec.

NOTES

For options see pag. 22.00.000

For other configurations/quick codes not available in this catalogue page please consult factory

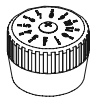
OPTIONS



Screw and locknut

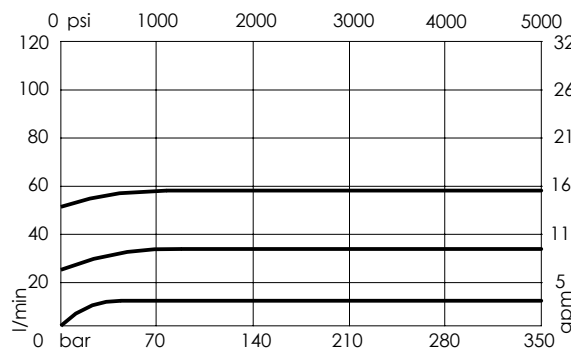


Handknob and locknut



Graduated handknob

CURVES



ORDERING CODES

Quick code	Description	Ports	Standard setting Q=5 l/min (1,3 gpm)	Adjustment range	Pressure increase	Options
MF000344	MFCT-150-LHTR-90-G10-N210	E,R,T: G 1"	① :170 bar (2500 psi) ② :150 bar (2200 psi)	100-200 bar (1400-2900 psi)	75 bar/turn (1100 psi/turn)	Screw and locknut