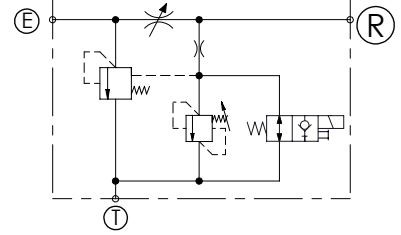
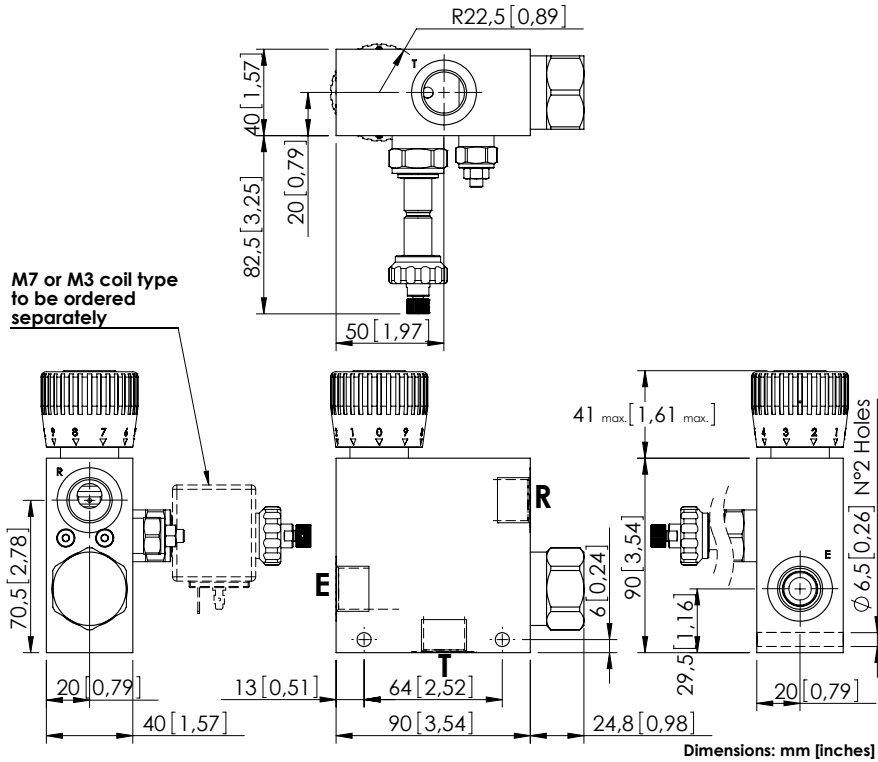


FLOW REGULATOR

MFCT-090-MPTR

3 WAYS COMPENSATED
WITH RELIEF VALVE AND
ELECTRIC UNLOADING



SPECIFICATIONS

Max. operating pressure:	See table
Rated flow:	See table
Weight:	1,65 kg (3.5 lbs)
Coil type:	M7 or M3 type
Contamination class to ISO 4406:	See technical spec.
MTF _d :	150 - 1200 years: See technical spec.

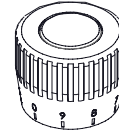
RELIEF VALVE

Setting range	35-210 bar (500-3000 psi)
Standard setting	210 bar (3000 psi)
Pressure increase	142 bar (2000 psi)

NOTES

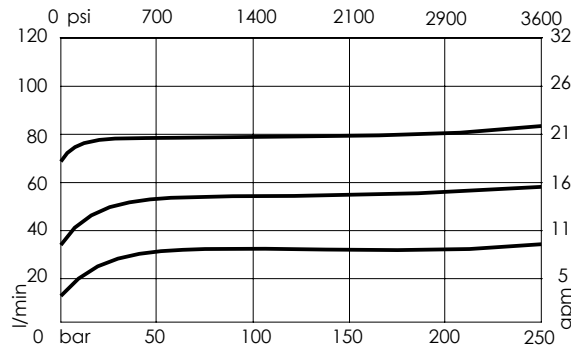
For other configurations/quick codes not available in this catalogue page please consult factory

OPTIONS



Graduated handknob
for flow regulation
under pressure

CURVES



ORDERING CODES

Quick code	Description	Ports	Manifold	Max. pressure	Max. inlet flow	Max. regulated flow	Options
MF000298	MFCT-090-MPTR-06-G12-N210	E,R,T: G 1/2"	Aluminium	210 bar (3000 psi)	90 l/min (24 gpm)	0-6 l/min (0-1.5 gpm)	Graduated handknob
MF000299	MFCT-090-MPTR-12-G12-N210	E,R,T: G 1/2"	Aluminium	210 bar (3000 psi)	90 l/min (24 gpm)	0-12 l/min (0-3 gpm)	Graduated handknob
MF000300	MFCT-090-MPTR-25-G12-N210	E,R,T: G 1/2"	Aluminium	210 bar (3000 psi)	90 l/min (24 gpm)	0-25 l/min (7 gpm)	Graduated handknob
MF000301	MFCT-090-MPTR-32-G12-N210	E,R,T: G 1/2"	Aluminium	210 bar (3000 psi)	90 l/min (24 gpm)	0-32 l/min (0-9 gpm)	Graduated handknob
MF000302	MFCT-090-MPTR-50-G12-N210	E,R,T: G 1/2"	Aluminium	210 bar (3000 psi)	90 l/min (24 gpm)	0-50 l/min (0-13 gpm)	Graduated handknob
MF000303	MFCT-090-MPTR-63-G12-N210	E,R,T: G 1/2"	Aluminium	210 bar (3000 psi)	90 l/min (24 gpm)	0-63 l/min (0-17 gpm)	Graduated handknob
MF000304	MFCT-090-MPTR-70-G12-N210	E,R,T: G 1/2"	Aluminium	210 bar (3000 psi)	90 l/min (24 gpm)	0-70 l/min (0-19 gpm)	Graduated handknob
MF000305	MFCT-090-MPTR-80-G12-N210	E,R,T: G 1/2"	Aluminium	210 bar (3000 psi)	90 l/min (24 gpm)	0-80 l/min (0-21 gpm)	Graduated handknob