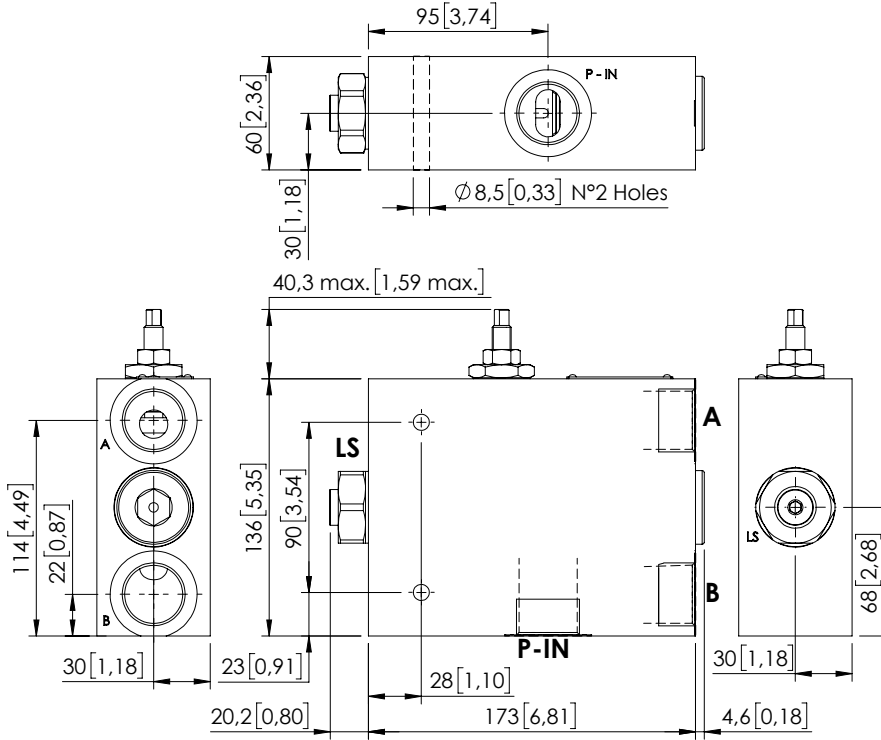


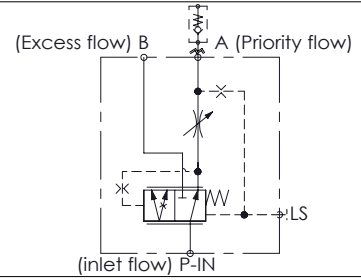
FLOW REGULATOR

MFPT-300-RHAR

PRESSURE COMPENSATED
PRIORITY



Dimensions: mm [inches]



SPECIFICATIONS

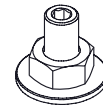
Max. operating pressure:	350 bar (5000 psi)
Rated flow:	300 l/min (79 gpm)
Regulated flow:	1-220 l/min (0,3-58 gpm)
Manifold:	Steel
Weight:	9,9 kg (21,8 lbs)
Contamination class to ISO 4406:	See technical spec.
MTF _d :	150 - 1200 years: See technical spec.

NOTES

For options see pag. 22.00.000

For other configurations/quick codes not available in this catalogue page please consult factory

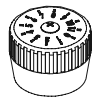
OPTIONS



Screw and locknut

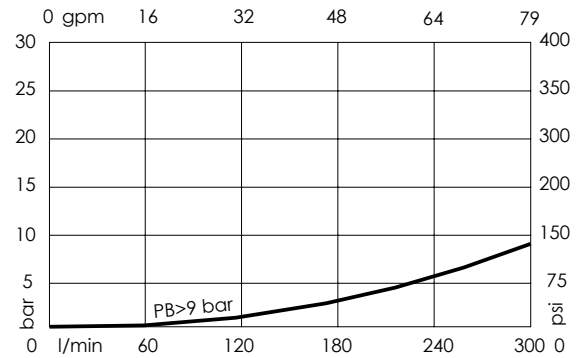
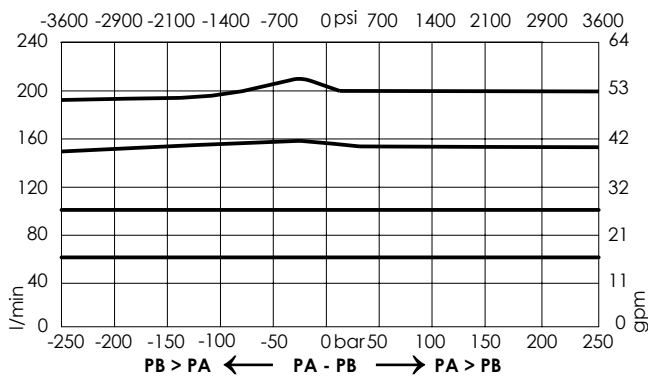


Handknob and locknut



Graduated handknob

CURVES



ORDERING CODES

Quick code	Description	Ports	Options
MF000283	MFPT-300-RHAR-20-G10-N350	P-IN,A,B: G 1" LS: G 1/4"	Screw and locknut