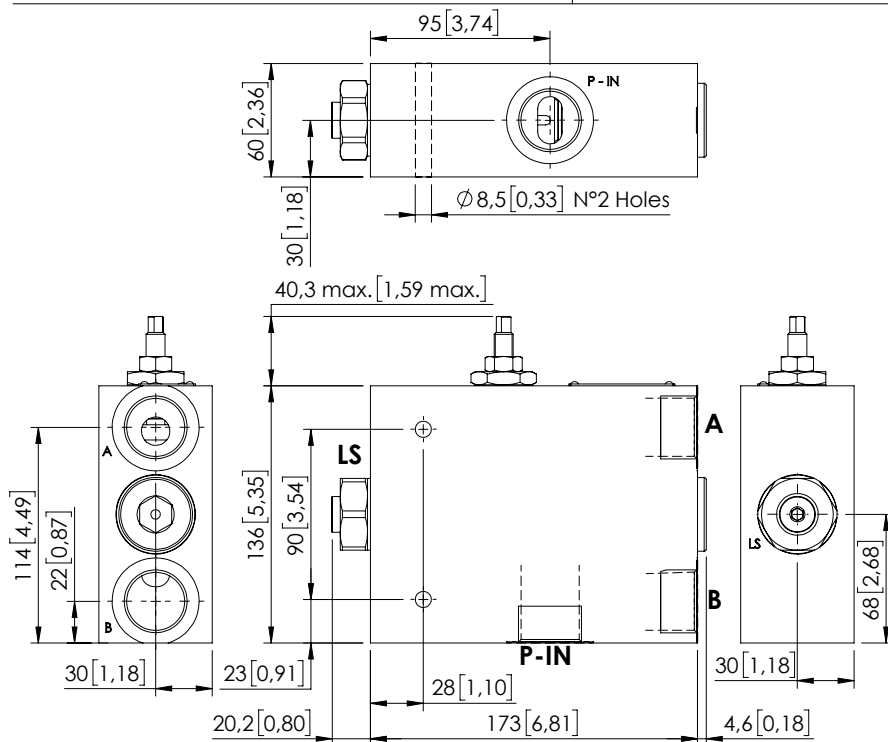
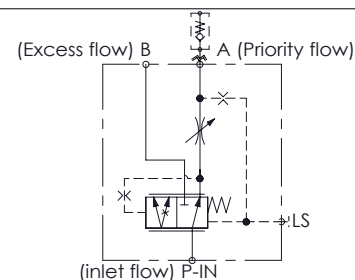


## MFPT-300-RHAR

PRESSURE COMPENSATED  
PRIORITY

Dimensions: mm [inches]



## SPECIFICATIONS

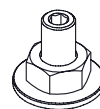
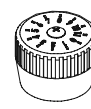
Max. operating pressure:	350 bar (5000 psi)
Rated flow:	300 l/min (79 gpm)
Regulated flow:	1-220 l/min (0,3-58 gpm)
Manifold:	Steel
Weight:	9,9 kg (21,8 lbs)
Contamination class to ISO 4406:	See technical spec.
MTTFd:	150 years

## NOTES

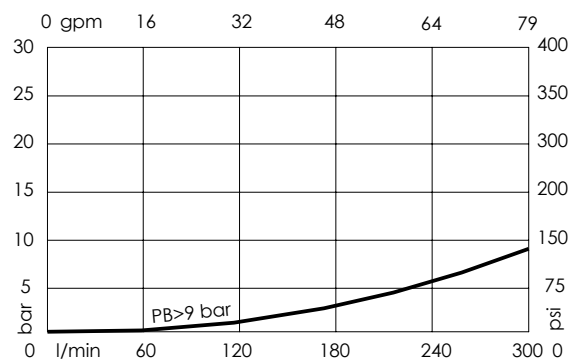
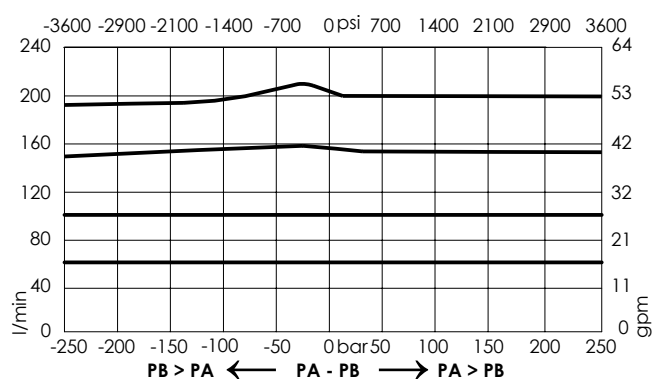
For options see pag. 22.00.000

For other configurations/quick codes not available in this catalogue page please consult factory

## OPTIONS

Screw and  
locknutHandknob  
and locknutGraduated  
handknob

## CURVES



## ORDERING CODES

Quick code	Description	Ports	Options
MF000283	MFPT-300-RHAR-20-G10-N350	P-IN, A, B: G 1" LS: G 1/4"	Screw and locknut