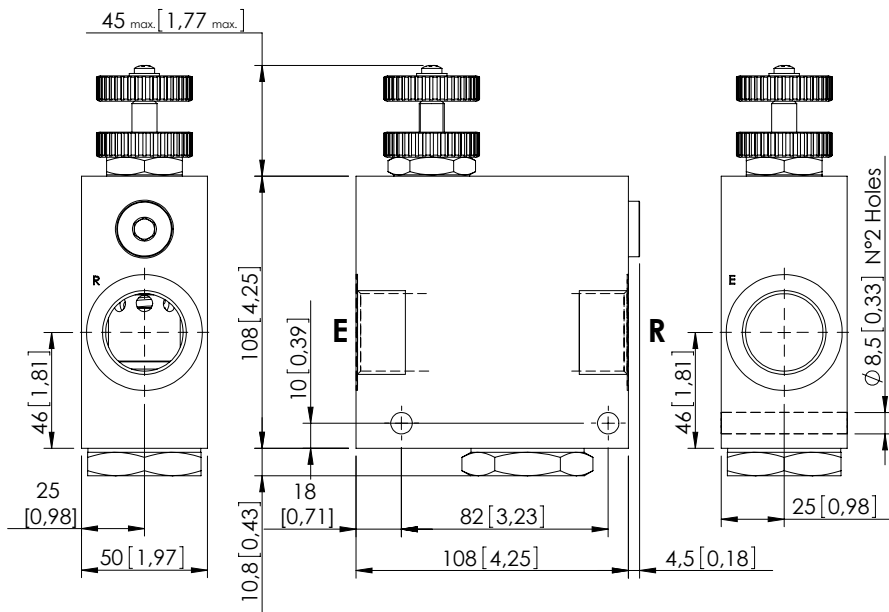


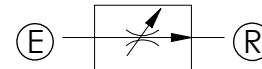
# FLOW REGULATOR

## MFST-190-RVTR

2 WAYS COMPENSATED



Dimensions: mm [inches]



### SPECIFICATIONS

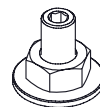
Max. operating pressure:	See table
Rated flow:	See table
Weight:	1,8/4 kg (3,9/8,8 lbs)
Contamination class to ISO 4406:	See technical spec.
MTTFd:	150 years

### NOTES

Regulation: STANDARD

For other configurations/quick codes not available in this catalogue page please consult factory

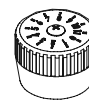
### OPTIONS



Screw and locknut

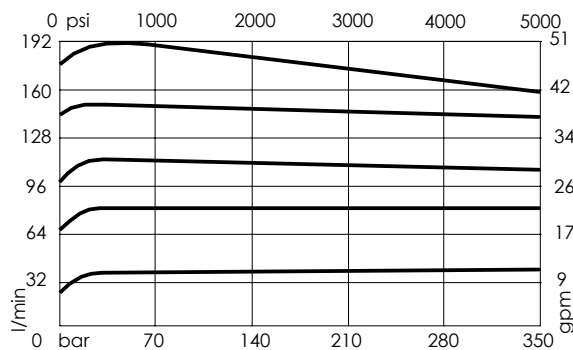


Handknob and locknut



Graduated handknob

### CURVES



### ORDERING CODES

Quick code	Description	Ports	Manifold	Max. pressure	Max. inlet flow	Max. regulated flow	Options
MF000253	MFST-190-RVTR-19-G10-N210	E,R: G 1"	Aluminium	210 bar (3000 psi)	190 l/min (50 gpm)	190 l/min (50 gpm)	Handknob and locknut
MF000254	MFST-190-RHTR-19-G10-N210	E,R: G 1"	Aluminium	210 bar (3000 psi)	190 l/min (50 gpm)	190 l/min (50 gpm)	Screw and locknut
MF000255	MFST-190-RMTR-19-G10-N210	E,R: G 1"	Aluminium	210 bar (3000 psi)	190 l/min (50 gpm)	190 l/min (50 gpm)	Graduated handknob
MF000256	MFST-190-RVSR-19-G10-N350	E,R: G 1"	Steel	350 bar (5000 psi)	190 l/min (50 gpm)	190 l/min (50 gpm)	Handknob and locknut
MF000257	MFST-190-RHSR-19-G10-N350	E,R: G 1"	Steel	350 bar (5000 psi)	190 l/min (50 gpm)	190 l/min (50 gpm)	Screw and locknut
MF000258	MFST-190-RMSR-19-G10-N350	E,R: G 1"	Steel	350 bar (5000 psi)	190 l/min (50 gpm)	190 l/min (50 gpm)	Graduated handknob