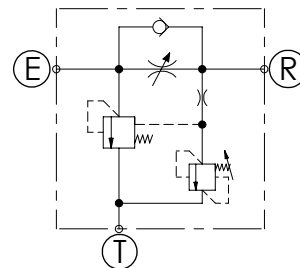
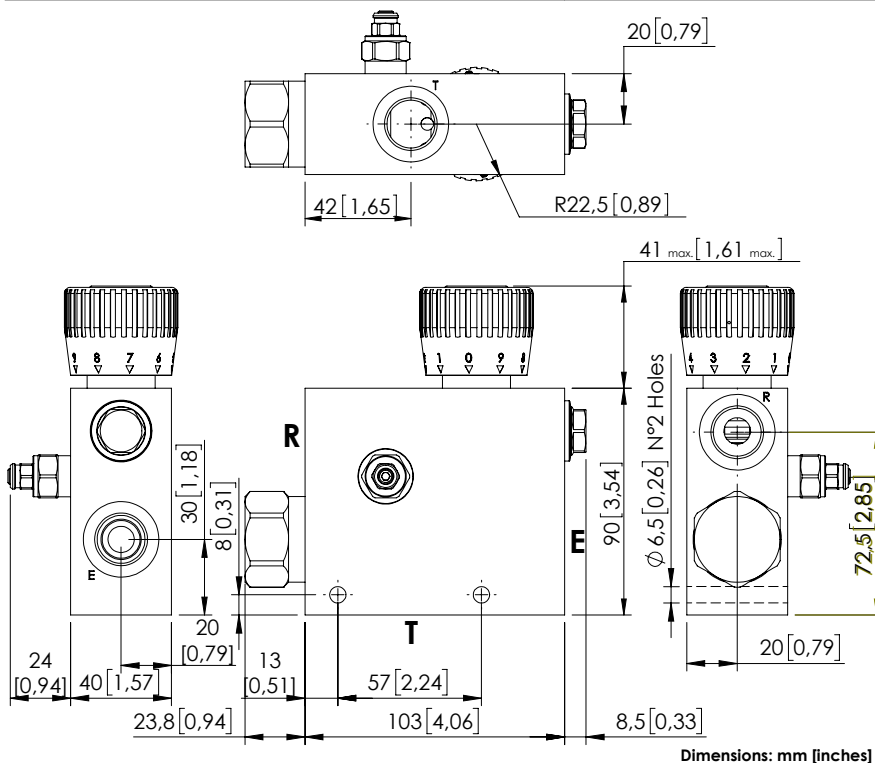


# FLOW REGULATOR

## MFCT-090-TPZR

3 WAYS COMPENSATED  
BY PASS CHECK VALVE  
RELIEF VALVE



### SPECIFICATIONS

Max. operating pressure:	See table
Rated flow:	See table
Weight:	1,44 kg (3 lbs)
Contamination class to ISO 4406:	See technical spec.
MTTFd:	150 years

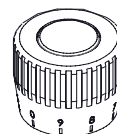
### RELIEF VALVE

Setting range	35-210 bar (500-3000 psi)
Standard setting	210 bar (3000 psi)
Pressure increase	142 bar (2000 psi)

### NOTES

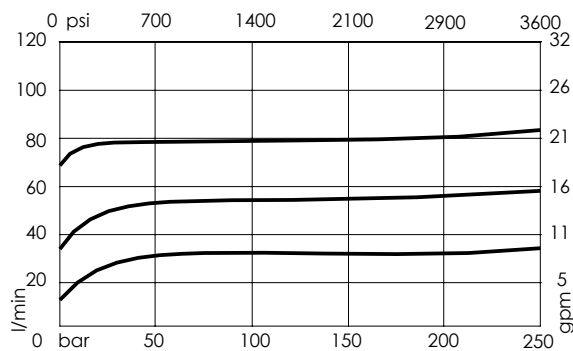
For other configurations/quick codes not available in this catalogue page please consult factory

### OPTIONS



Graduated handknob  
for flow regulation  
under pressure

### CURVES



### ORDERING CODES

Quick code	Description	Ports	Manifold	Max. pressure	Max. inlet flow	Regulated flow range	Options
MF000226	MFCT-090-TPZR-06-G12-N210	E,R,T: G 1/2"	Aluminium	210 bar (3000 psi)	90 l/min (24 gpm)	0-6 l/min (0-1,5 gpm)	Graduated handknob
MF000227	MFCT-090-TPZR-12-G12-N210	E,R,T: G 1/2"	Aluminium	210 bar (3000 psi)	90 l/min (24 gpm)	0-12 l/min (0-3 gpm)	Graduated handknob
MF000228	MFCT-090-TPZR-25-G12-N210	E,R,T: G 1/2"	Aluminium	210 bar (3000 psi)	90 l/min (24 gpm)	0-25 l/min (7 gpm)	Graduated handknob
MF000229	MFCT-090-TPZR-32-G12-N210	E,R,T: G 1/2"	Aluminium	210 bar (3000 psi)	90 l/min (24 gpm)	0-32 l/min (0-9 gpm)	Graduated handknob
MF000230	MFCT-090-TPZR-50-G12-N210	E,R,T: G 1/2"	Aluminium	210 bar (3000 psi)	90 l/min (24 gpm)	0-50 l/min (0-13 gpm)	Graduated handknob
MF000231	MFCT-090-TPZR-63-G12-N210	E,R,T: G 1/2"	Aluminium	210 bar (3000 psi)	90 l/min (24 gpm)	0-63 l/min (0-17 gpm)	Graduated handknob
MF000232	MFCT-090-TPZR-70-G12-N210	E,R,T: G 1/2"	Aluminium	210 bar (3000 psi)	90 l/min (24 gpm)	0-70 l/min (0-19 gpm)	Graduated handknob
MF000233	MFCT-090-TPZR-80-G12-N210	E,R,T: G 1/2"	Aluminium	210 bar (3000 psi)	90 l/min (24 gpm)	0-80 l/min (0-21 gpm)	Graduated handknob