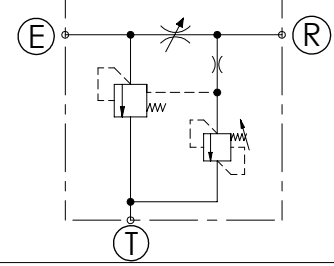
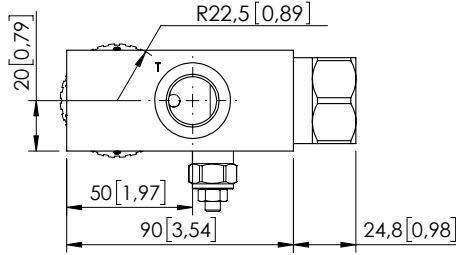


# MFCT-090-LPZR

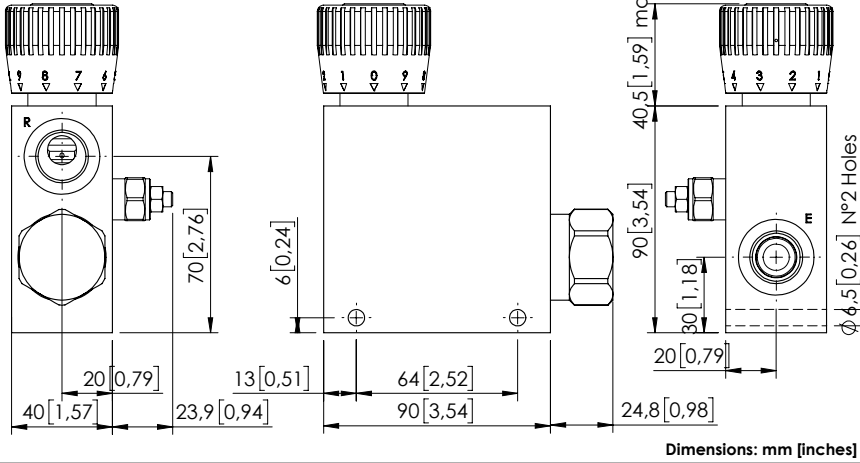
3 WAYS COMPENSATED  
WITH RELIEF VALVE



## SPECIFICATIONS

Max. operating pressure:	See table
Rated flow:	See table
Weight:	1,29 kg (2,8 lbs)
Contamination class to ISO 4406:	See technical spec.
MTFda:	150 - 1200 years: See technical spec.

RELIEF VALVE	
Setting range	35-210 bar (500-3000 psi)
Standard setting	210 bar (3000 psi)
Pressure increase	142 bar (2000 psi)

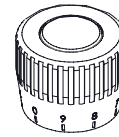


## NOTES

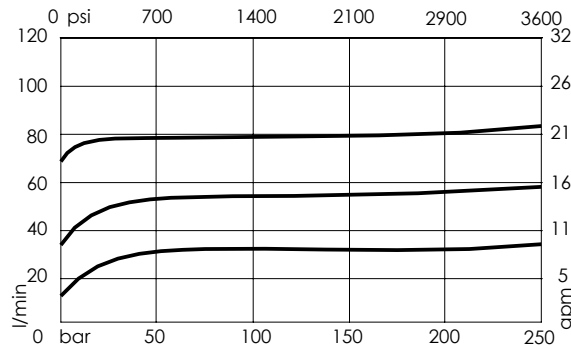
For other configurations/quick codes not available in this catalogue page please consult factory

## CURVES

## OPTIONS



Graduated handknob  
for flow regulation  
under pressure



## ORDERING CODES

Quick code	Description	Ports	Manifold	Max. pressure	Max. inlet flow	Max. regulated flow	Options
MF000218	MFCT-090-LPZR-06-G12-N210	E,R,T: G 1/2"	Aluminium	210 bar (3000 psi)	90 l/min (24 gpm)	0-6 l/min (0-1,5 gpm)	Graduated handknob
MF000219	MFCT-090-LPZR-12-G12-N210	E,R,T: G 1/2"	Aluminium	210 bar (3000 psi)	90 l/min (24 gpm)	0-12 l/min (0-3 gpm)	Graduated handknob
MF000220	MFCT-090-LPZR-25-G12-N210	E,R,T: G 1/2"	Aluminium	210 bar (3000 psi)	90 l/min (24 gpm)	0-25 l/min (7 gpm)	Graduated handknob
MF000221	MFCT-090-LPZR-32-G12-N210	E,R,T: G 1/2"	Aluminium	210 bar (3000 psi)	90 l/min (24 gpm)	0-32 l/min (0-9 gpm)	Graduated handknob
MF000222	MFCT-090-LPZR-50-G12-N210	E,R,T: G 1/2"	Aluminium	210 bar (3000 psi)	90 l/min (24 gpm)	0-50 l/min (0-13 gpm)	Graduated handknob
MF000223	MFCT-090-LPZR-63-G12-N210	E,R,T: G 1/2"	Aluminium	210 bar (3000 psi)	90 l/min (24 gpm)	0-63 l/min (0-17 gpm)	Graduated handknob
MF000224	MFCT-090-LPZR-70-G12-N210	E,R,T: G 1/2"	Aluminium	210 bar (3000 psi)	90 l/min (24 gpm)	0-70 l/min (0-19 gpm)	Graduated handknob
MF000225	MFCT-090-LPZR-80-G12-N210	E,R,T: G 1/2"	Aluminium	210 bar (3000 psi)	90 l/min (24 gpm)	0-80 l/min (0-21 gpm)	Graduated handknob