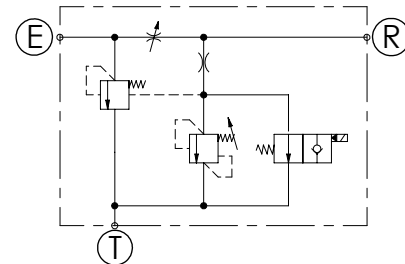
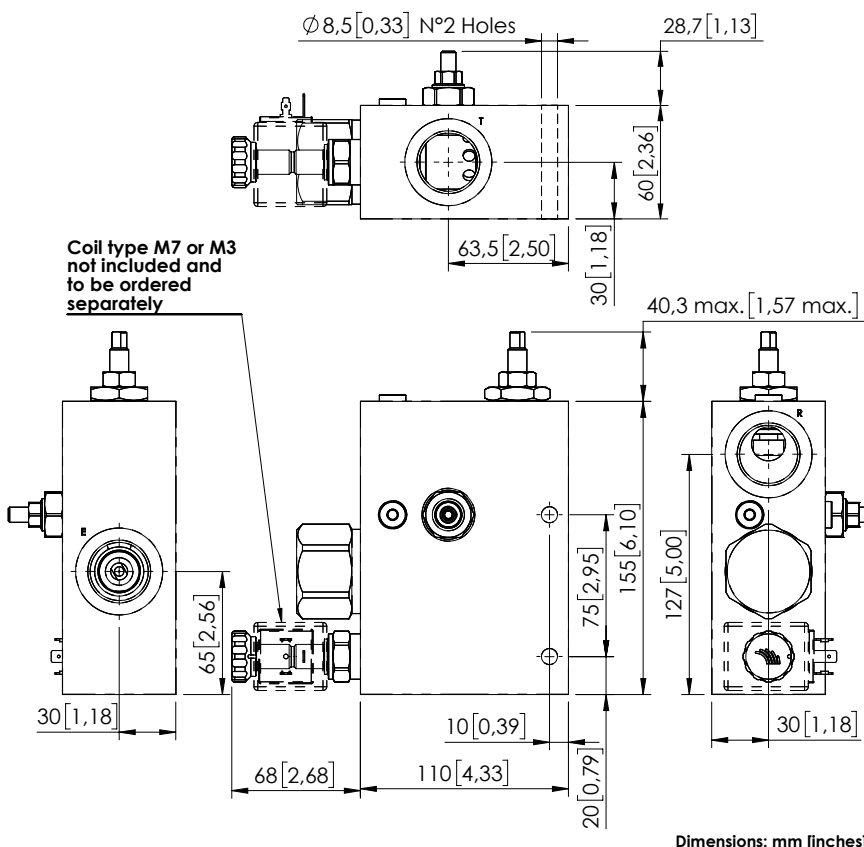


FLOW REGULATOR

MFCT-280-MVTR

3 WAYS COMPENSATED
WITH RELIEF VALVE AND
ELECTRIC UNLOADING



SPECIFICATIONS

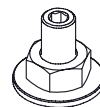
Max. operating pressure:	250 bar (3600 psi)
Rated flow:	280 l/min (74 gpm)
Regulated flow:	190 l/min (50 gpm)
Manifold:	Aluminium
Weight:	3,24 kg (7,14 lbs)
Coil type:	M7 or M3 type
Contamination class to ISO 4406:	See technical spec.
MTTFd:	150 years

NOTES

For option see pag. 22.00.000

For other configurations/quick codes not available in this catalogue page please consult factory

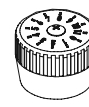
OPTIONS



Screw and locknut

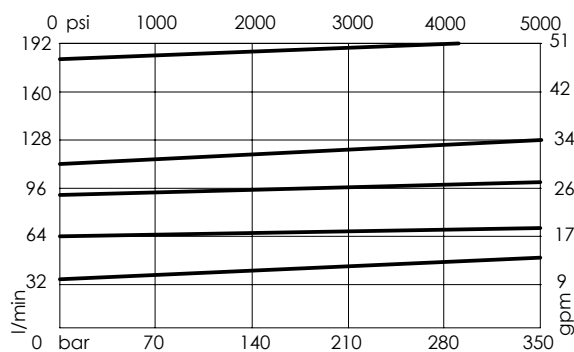


Handknob and locknut



Graduated handknob

CURVES



ORDERING CODES

Quick code	Description	Ports	Standard setting Q=5 l/min (1,3 gpm)	Adjustment range	Pressure increase	Options
MF000143	MFCT-280-MVTR-19-G10-N250	E,R,T: G 1"	240 bar (3400 psi)	140-350 bar (2000-5000 psi)	142 bar/turn (2000 psi/turn)	Screw and locknut