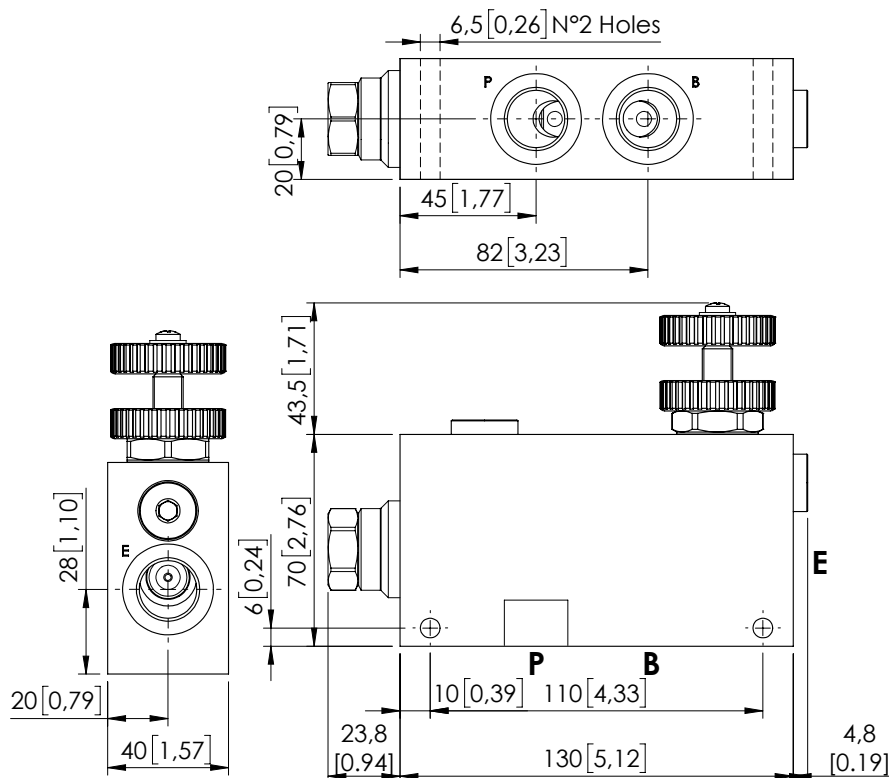
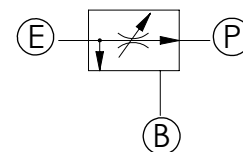


MFPT-090-RVTR

PRESSURE COMPENSATED
PRIORITY FLOW REGULATOR

Dimensions: mm [inches]



SPECIFICATIONS

Max. operating pressure:	See table
Rated flow:	See table
Weight:	1,2 kg (2,6 lbs)
Contamination class to ISO 4406:	See technical spec.
MTTFd:	150 years

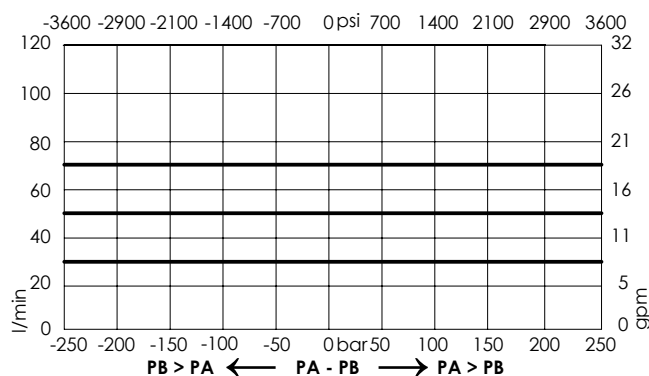
NOTES

For other configurations/quick codes not available in this catalogue page please consult factory

OPTIONS

Handknob
and locknut

CURVES



ORDERING CODES

Quick code	Description	Ports	Manifold	Max. pressure	Max. inlet flow	Max. regulated flow	Options
MF000121	MFPT-090-RVTR-70-G12-N210	E,P,T: G 1/2"	Aluminium	210 bar (3000 psi)	90 l/min (24 gpm)	70 l/min (19 gpm)	Handknob and locknut
MF000136	MFPT-090-RVTR-70-G38-N210	E,P,T: G3/8"	Aluminium	210 bar (3000 psi)	90 l/min (24 gpm)	70 l/min (19 gpm)	Handknob and locknut