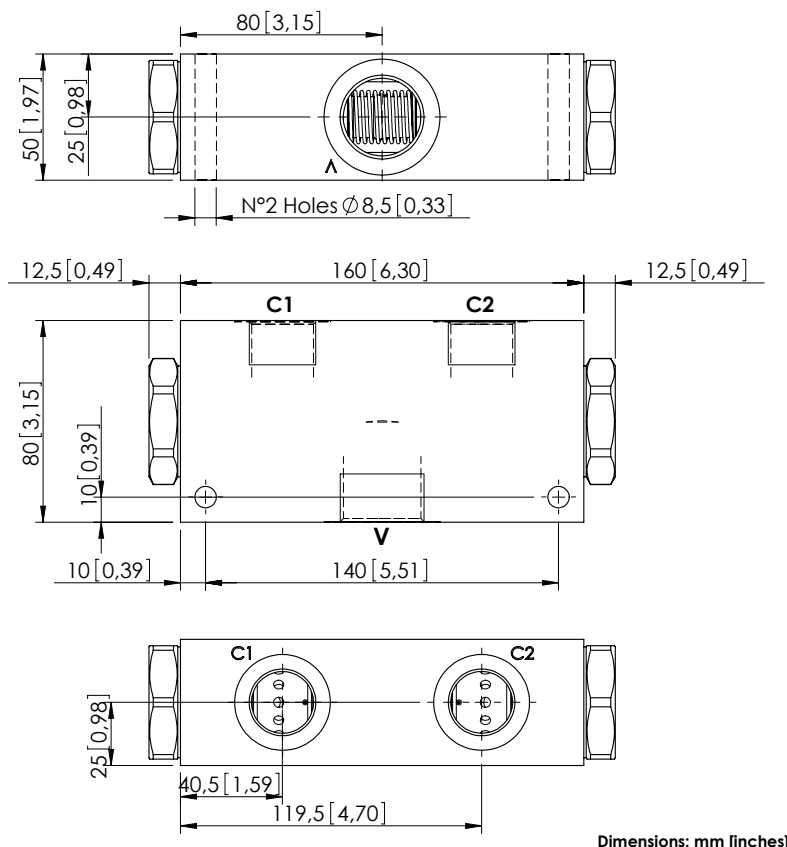
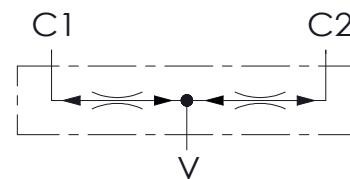


MFDT-150-BFLR



Dimensions: mm [inches]



SPECIFICATIONS

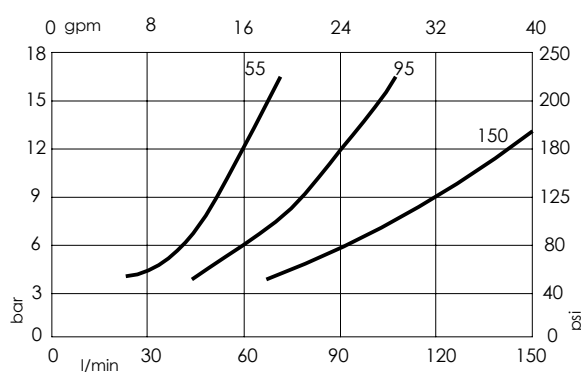
Max. operating pressure:	210 bar (3000 psi)
Division or combination:	50 %- 50 %
Manifold:	Aluminium
Weight:	2,1 kg (4,63 lbs)
Contamination class to ISO 4406:	See technical spec.
MTTFd:	150 years

NOTES

Flow divider accuracy: $\pm 7/8\%$ between 40-100% of max. input flow.

For other configurations/quick codes not available in this catalogue page please consult factory

CURVES



ORDERING CODES

Quick code	Description	Main ports size	Inlet range flow
MF000117	MFDT-150-BFLR-95-G10-N210	V: G 1"; C1,C2: G 3/4"	56 - 95 l/min (15-25 gpm)
MF000118	MFDT-150-BFLR-15-G10-N210	V: G 1"; C1,C2: G 3/4"	90 - 150 l/min (24-40 gpm)
MF000122	MFDT-150-BFLR-55-G34-N210	V: G 3/4"; C1,C2: G 1/2"	28 - 55 l/min (7.5-15 gpm)
MF000123	MFDT-150-BFLR-95-G34-N210	V: G 3/4"; C1,C2: G 1/2"	56 - 95 l/min (15-25 gpm)