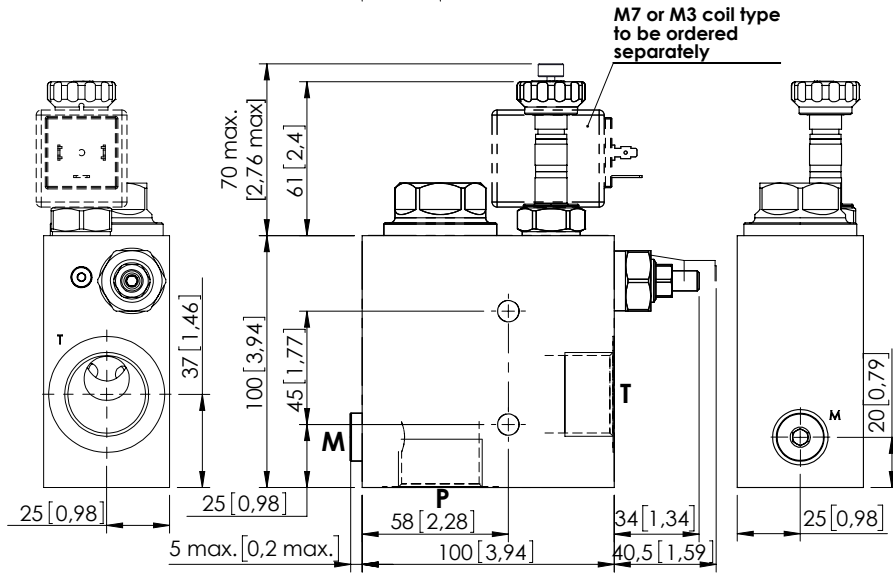
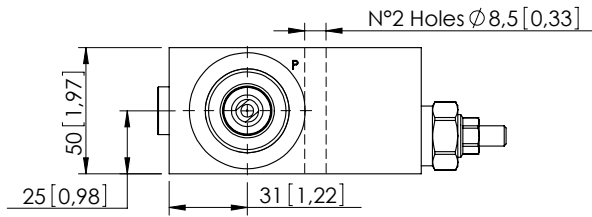


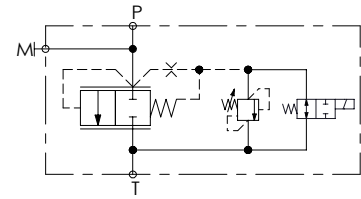
UNLOADING VALVE

MFTS-200-DHAN

SOLENOID OPERATED
UNLOADING VALVE
WITH RELIEF



Dimensions: mm [inches]



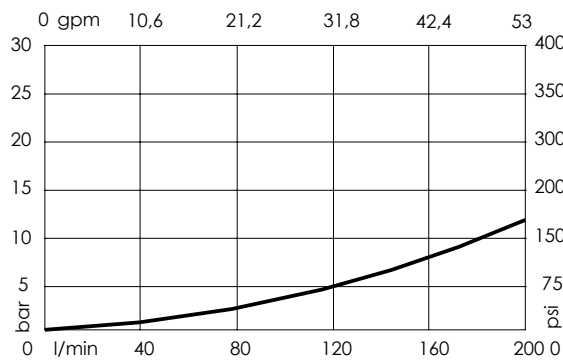
SPECIFICATIONS

Max. operating pressure:	350 bar (5000 psi)
Rated flow:	200 l/min (53 gpm)
Manifold:	Steel
Weight:	3,57 kg (7,8 lbs)
Coil type:	M7 or M3 type
Contamination class to ISO 4406:	See technical spec.
MTTF _a :	150 - 1200 years: See technical spec.

NOTES

Available in steel version for 350 bar (5000 psi) maximum operating pressure.
See chapter 21.00.000 for coil.
For other configurations/quick codes not available in this catalogue page please consult factory

CURVES



OPTIONS

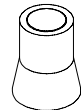
Standard



Push style override



SEALING CAP



Ordering code:
AT000020

ORDERING CODES

Quick code	Description	Ports	Standard setting Q=5 l/min (1,3 gpm)	Adjustment range	Pressure increase	Options
MF000083	MFTS-200-DHAN-NP-G10-N350	P,T: G 1" M: G 1/4"	350 bar (5000 psi)	140-350 bar (2000-5000 psi)	142 bar/turn (2000 psi/turn)	Standard
MF000103	MFTS-200-DHAE-NP-G10-N350	P,T: G 1" M: G 1/4"	350 bar (5000 psi)	140-350 bar (2000-5000 psi)	142 bar/turn (2000 psi/turn)	Push style override