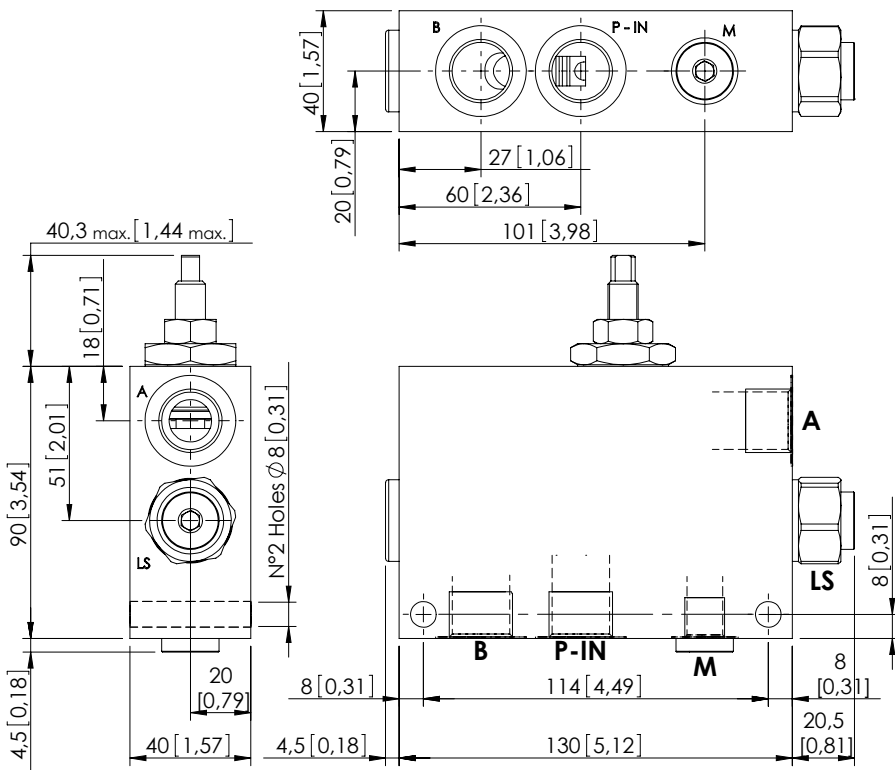
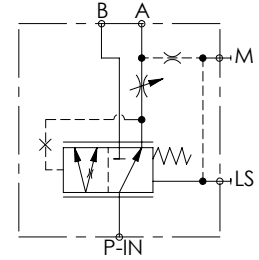


# MFPT-100-RHAR

PRESSURE COMPENSATED  
PRIORITY FLOW REGULATOR



Dimensions: mm [inches]



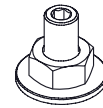
## SPECIFICATIONS

Max. operating pressure:	See table
Rated flow:	See table
Weight:	3,38 kg (7,5 lbs)
Contamination class to ISO 4406:	See technical spec.
MTF <sub>d</sub> :	150 - 1200 years: See technical spec.

## NOTES

For correct operation 8-9 bar (110-130 psi) must be present in port A. For open centre or low pressure systems a 9 bar (130 psi) check valve should be fitted in port A, see page 61. Spool switching can be influenced by flexing or stressing the valve body. It is recommended to fit spacers on the mounting bolts between the valve and the mounting surface. For options see pag. 22.00.000 For other configurations/quick codes not available in this catalogue page please consult factory

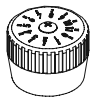
## OPTIONS



Screw and locknut

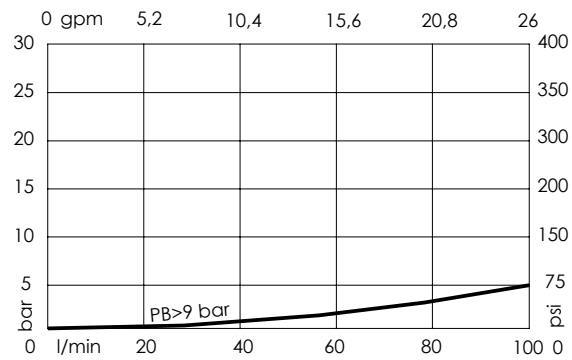
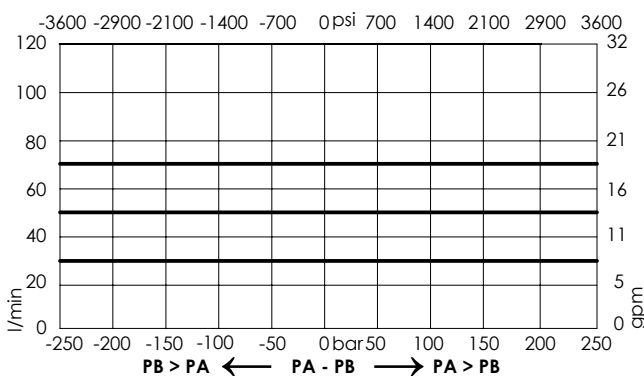


Handknob and locknut



Graduated handknob

## CURVES



## ORDERING CODES

Quick code	Description	Ports	Manifold	Max. pressure	Max. inlet flow	Max. regulated flow	Options
MF000069	MFPT-100-RHAR-85-G12-N350	P-IN,A,B: G 1/2" LS,M: G 1/4"	Steel	350 bar (5000 psi)	100 l/min (26 gpm)	85 l/min (22 gpm)	Screw and locknut