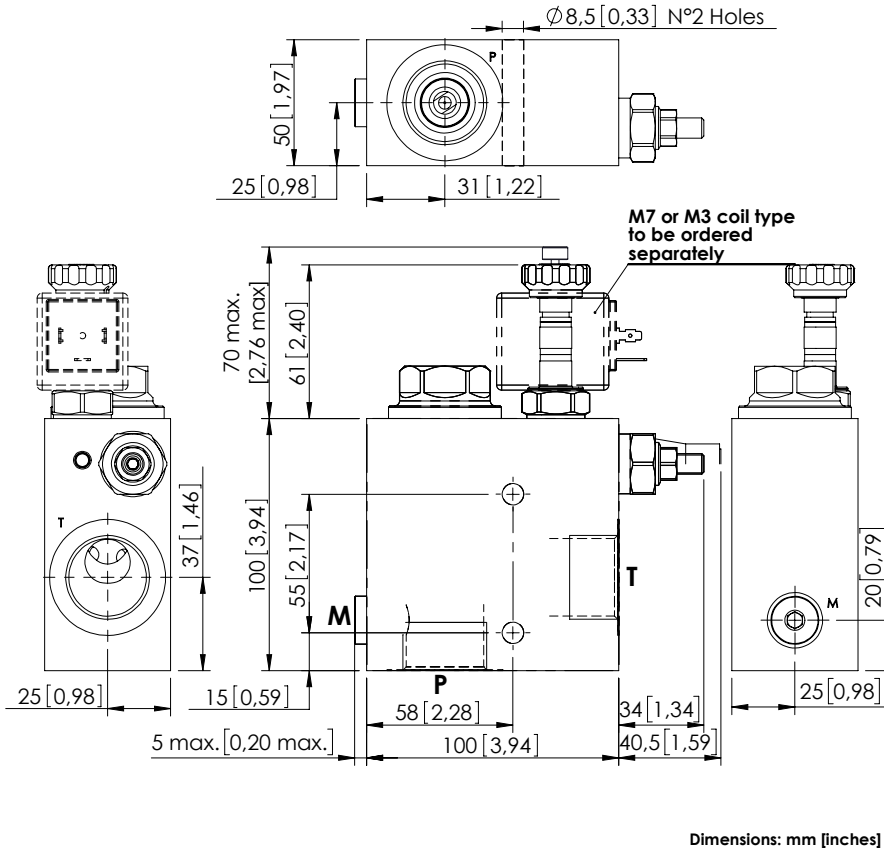


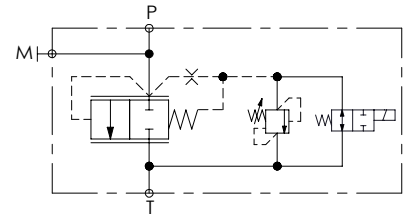
UNLOADING VALVE

MFTS-200-DHAN

SOLENOID OPERATED
UNLOADING VALVE
WITH RELIEF



Dimensions: mm [inches]



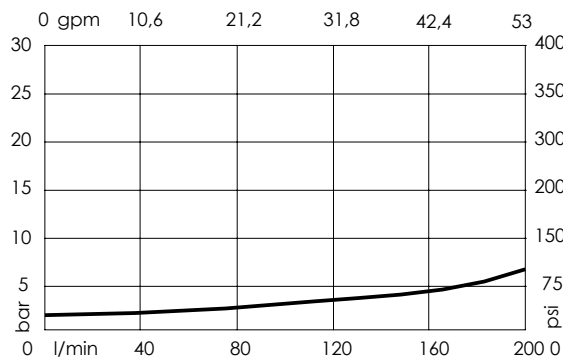
SPECIFICATIONS

| | |
|----------------------------------|---|
| Max. operating pressure: | 250 bar (3600 psi) |
| Rated flow: | 200 l/min (53 gpm) |
| Manifold: | Aluminium |
| Weight: | 1,65 kg (3,7 lbs) |
| Internal leakage: | 80 cm ³ /min (4,88 in ³ /min) |
| Coil type: | M7 or M3 type |
| Contamination class to ISO 4406: | See technical spec. |
| MTTFd: | 150 years |

NOTES

Available in steel version for 350 bar (5000 psi) maximum operating pressure.
See chapter 21.00.000 for coil.
For other configurations/quick codes not available in this catalogue page please consult factory

CURVES



OPTIONS

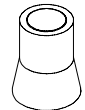
Standard



Push style override



SEALING CAP



Ordering code:
AT000020

ORDERING CODES

| Quick code | Description | Ports | Standard setting Q=5 l/min (1,3 gpm) | Adjustment range | Pressure increase | Options |
|------------|---------------------------|------------------------|---|-----------------------------|---------------------------------|---------------------|
| MF000039 | MFTS-200-DHAN-NP-G10-N250 | P,T: G 1" M: G 1/4" | 200 bar (2900 psi) | 140-350 bar (2000-5000 psi) | 142 bar/turn (2000 psi/turn) | Standard |
| MF000043 | MFTS-200-DHAE-NP-G10-N250 | P,T: G 1" M: G 1/4" | 200 bar (2900 psi) | 140-350 bar (2000-5000 psi) | 142 bar/turn (2000 psi/turn) | Push style override |
| | | | | | | |
| | | | | | | |
| | | | | | | |
| | | | | | | |