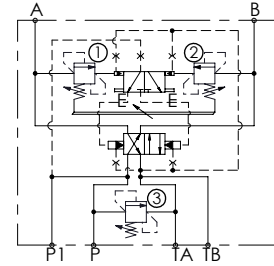
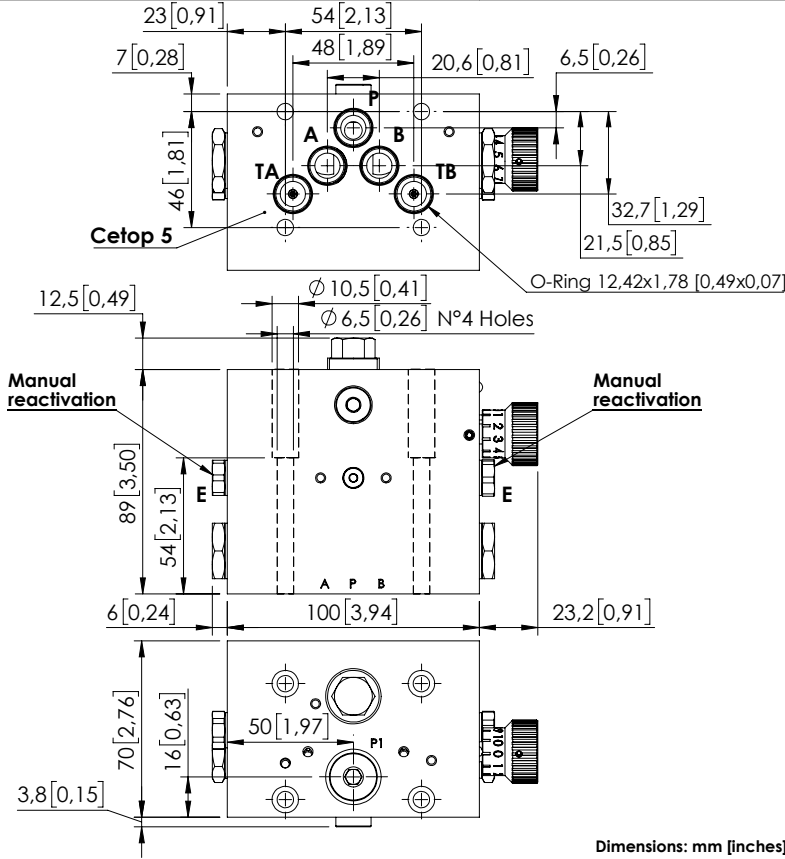


MDAP-090-NNNR

PRESSURE SWITCHING



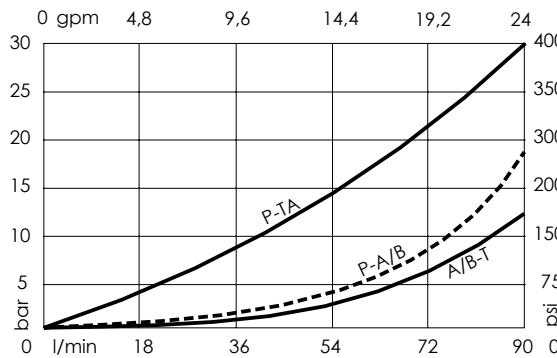
SPECIFICATIONS

Max. operating pressure:	350 bar (5000 psi)
Rated flow:	90 l/min (24 gpm)
Weight:	4,45 kg (9,8 lbs)
Manifold:	Cast Iron
Contamination class to ISO 4406:	See technical spec.
MTF _d :	150 - 1200 years: See technical spec.

NOTES

Minimum required flow: 3 l/min (0,8 gpm).
 For other configurations/quick codes not available in this catalogue page please consult factory

CURVES



ORDERING CODES

Quick code	Description	Ports	Standard setting Q=5 l/min (1,3 gpm)	Setting range	Pressure increase
MD000119	MDAP-090-NNNR-NP-N10-N350	A,B,P,TA,TB: CETOP 5 P1: G1/4"	① 200 bar (2900 psi) ② 180 bar (2600 psi) ③ 200 bar (2900 psi)	① ② 140-350 bar (2000-5000 psi) ③ Fix setting	① ② 146 bar/turn (2100 psi/turn)