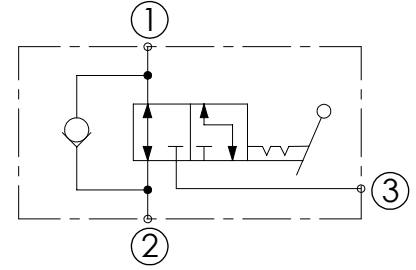
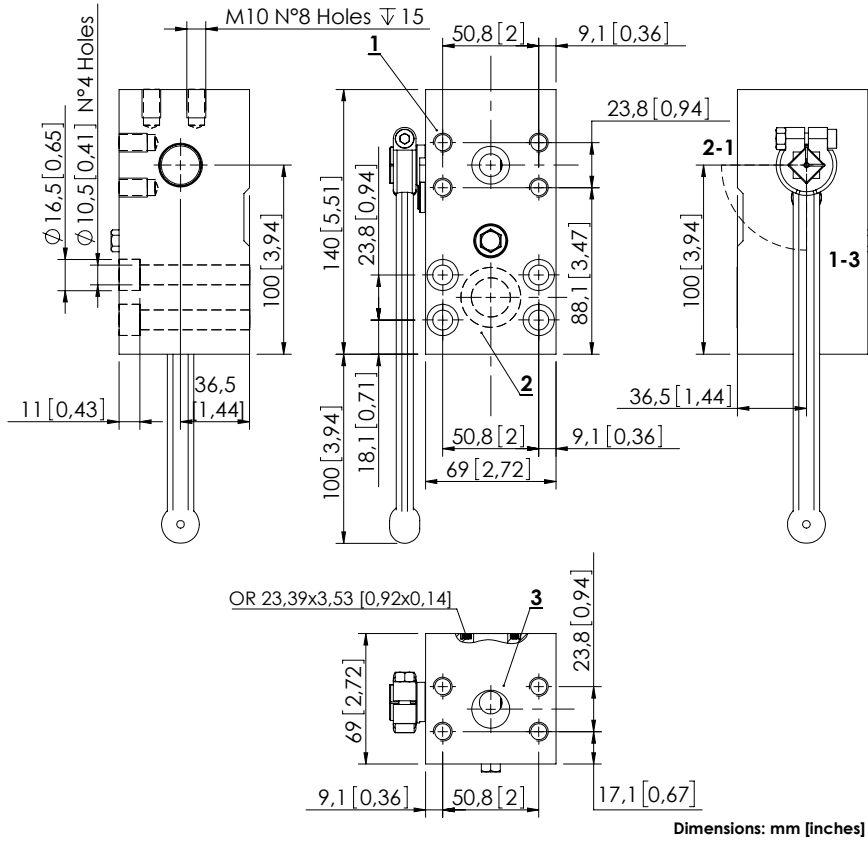


MDRC-200-SLVN

AUXILIARY
SELECTOR VALVE



SPECIFICATIONS

Max. operating pressure:	500 bar (7200 psi)
Rated flow:	200 l/min (53 gpm)
Weight:	4,86 kg (10,7 lbs)
Manifold:	Steel
Contamination class to ISO 4406:	See technical spec.
MTTFd:	150 - 1200 years: See technical spec.

NOTES

1 to 2, leakage in 3: 20 cm³ @ 100 bar (1,22 in³ @ 1500 psi)
1 to 3, leakage in 2: 20 cm³ @ 100 bar (1,22 in³ @ 1500 psi)

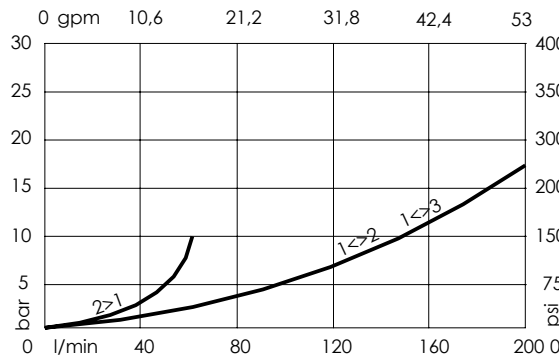
Oil specification: 46 cSt

Oil temperature: 35°C (1,66 °F)

Handle supplied separately, not attached to the block.

For other configurations/quick codes not available in this catalogue page please consult factory

CURVES



ORDERING CODES

Quick code	Description	Ports
MD000072	MDRC-200-SLVN-NP-S34-N500	1,2,3: 3/4" SAE 6000