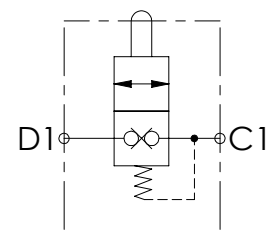
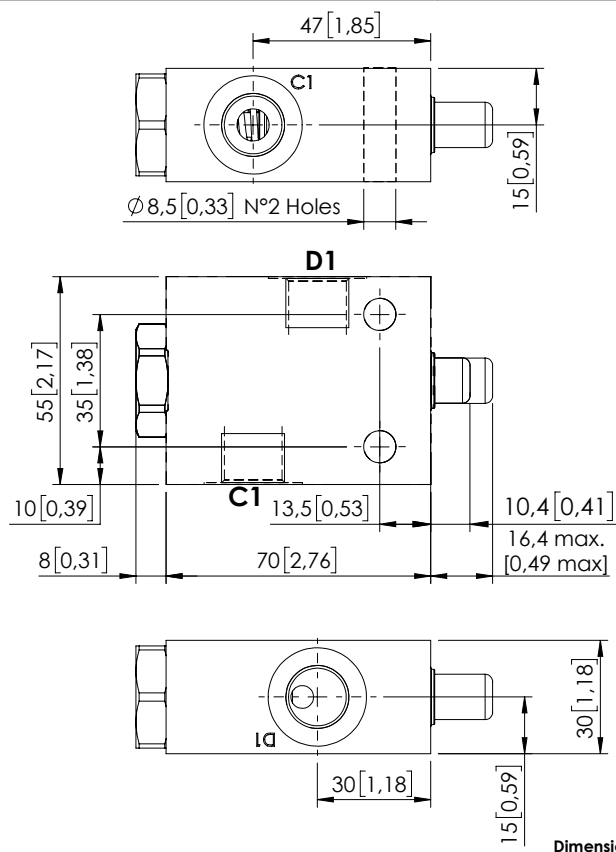


MDTC-030-ABNR

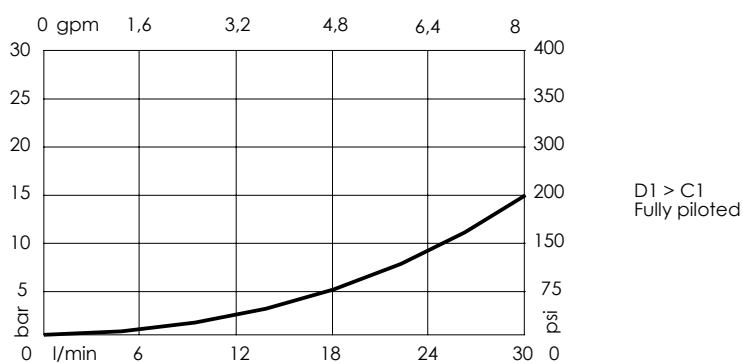
NORMALLY CLOSED

**SPECIFICATIONS**

Max. operating pressure:	350 bar (5000 psi)
Rated flow:	30 l/min (8 gpm)
Manifold:	Steel
Weight:	0.78 kg (1,71 lbs)
Maximum stroke:	12,6 mm [0,49 inch]
Contamination class to ISO 4406:	See technical spec.
MTTF _d :	150 - 1200 years: See technical spec.

NOTES

For other configurations/quick codes not available in this catalogue page please consult factory

CURVES**ORDERING CODES**

Quick code	Description	Ports	Start opening	Fully open
MD000064	MDTC-030-ABNR-NP-G38-N350	D1,C1: G 3/8"	9 kg (19,8 lb)	19,7 kg (43,4 lb)