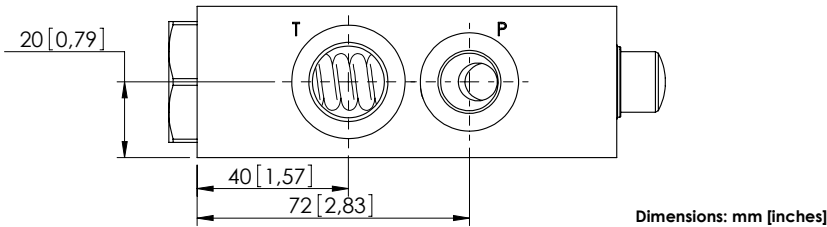
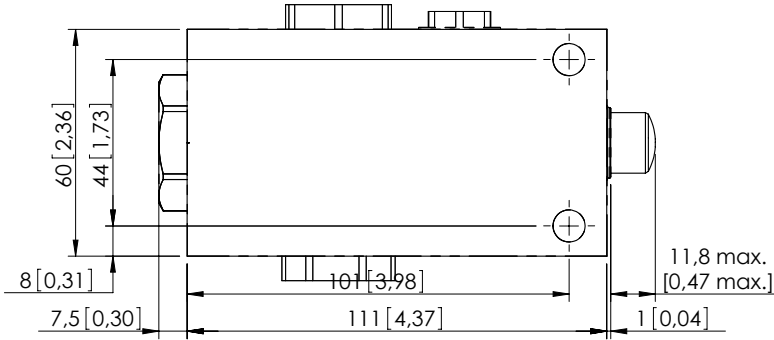
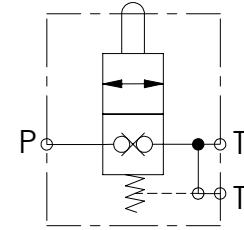
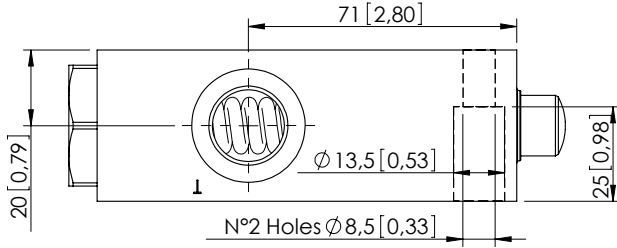


END OF STROKE VALVE

# MDTC-080-ABNR

NORMALLY CLOSED



Dimensions: mm [inches]

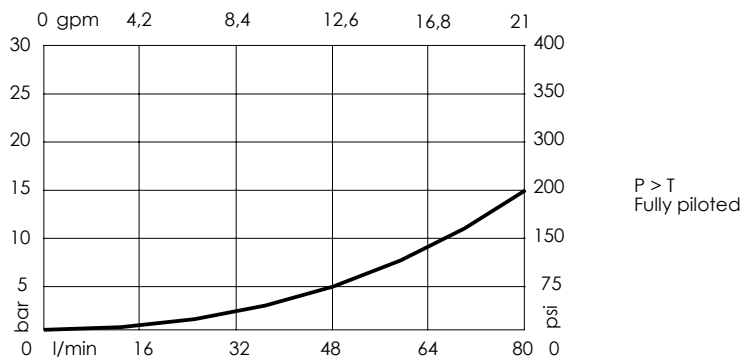
## SPECIFICATIONS

Max. operating pressure:	350 bar (5000 psi)
Rated flow:	80 l/min (21 gpm)
Manifold:	Steel
Weight:	1,72 kg (3,76 lbs)
Maximum stroke:	11,8 mm [0,47 inch]
Contamination class to ISO 4406:	See technical spec.
MTF <sub>a</sub> :	150 - 1200 years: See technical spec.

## NOTES

For other configurations/quick codes not available in this catalogue page please consult factory

## CURVES



P > T  
Fully piloted

## ORDERING CODES

Quick code	Description	Ports	Start opening	Fully open
MD000044	MDTC-080-ABNR-NP-G38-N350	P: G 3/8" T: G 1/2"	36 kg (79,3 lb)	119 kg (262,3 lb)