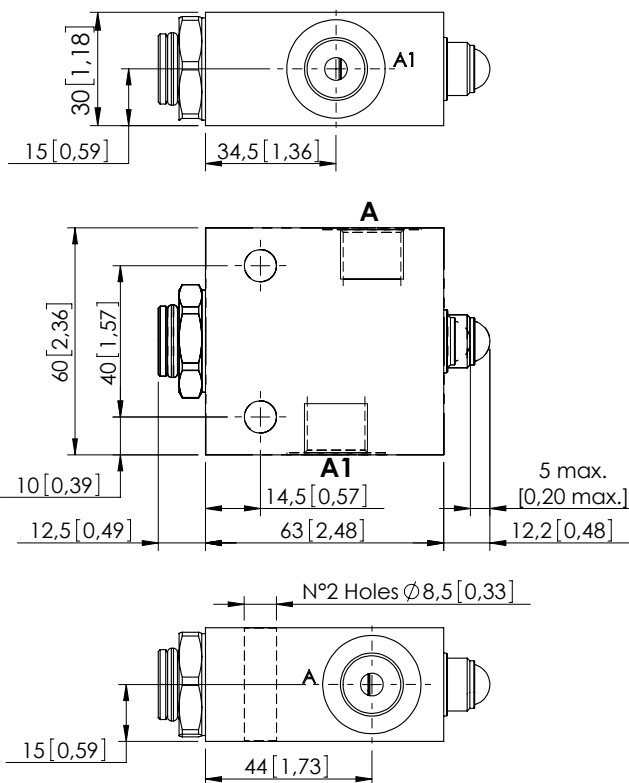
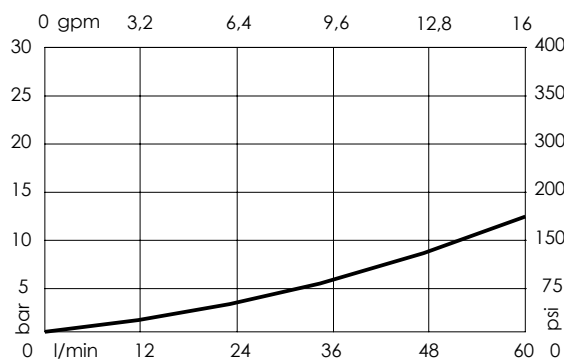


MDTA-060-ABNRNORMALLY OPEN
COMPENSATED**NOTES**

Max. leakage at 150 bar (14,5 psi) when fully closed is 200 cm³/min (12 in³/min).

For other configurations/quick codes not available in this catalogue page please consult factory

CURVES

A > A1
A1 > A
Not piloted

ORDERING CODES

Quick code	Description	Ports	Start closing	Fully closed
MD000043	MDTA-060-ABNR-NP-G38-N350	A,A1: G 3/8"	4 kg (8,8 lb)	13 kg (28,6 lb)