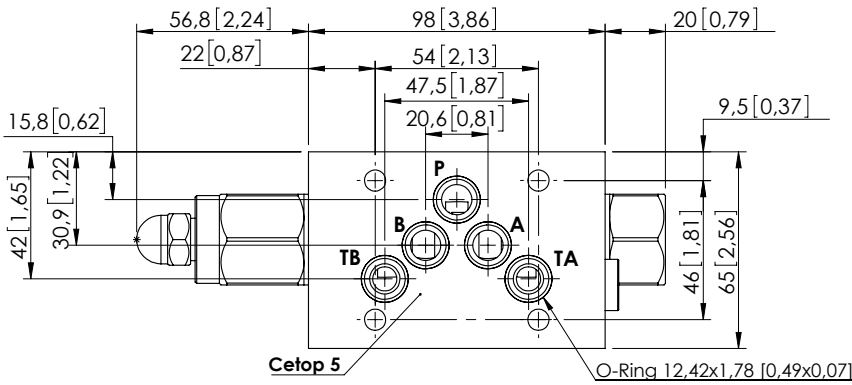
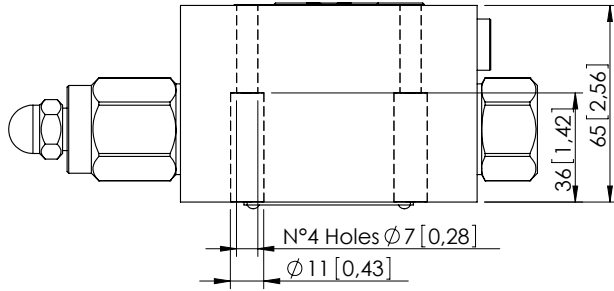
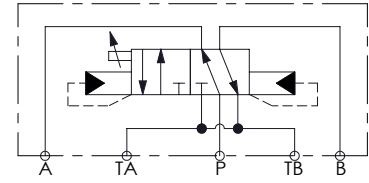


# MDAF-080-ANNR

FLOW SWITCHING



Dimensions: mm [inches]



## SPECIFICATIONS

Max. operating pressure:	350 bar (5000 psi)
Rated flow:	80 l/min (21 gpm)
Weight:	3,12 kg (6,8 lbs)
Manifold:	Cast Iron
Contamination class to ISO 4406:	See technical spec.
MTF <sub>d</sub> :	150 - 1200 years: See technical spec.

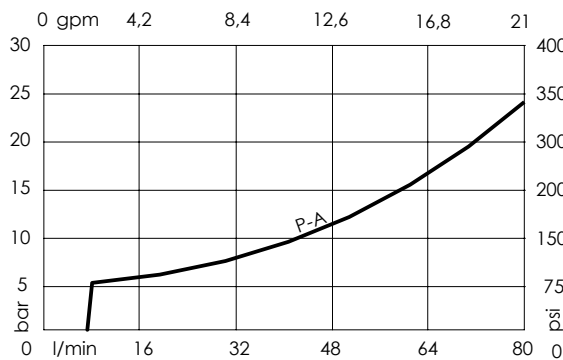
## NOTES

Minimum required flow: 6 l/min (1,6 gpm)

Flexible pipe should be placed between valve and cylinder rod side.  
No suitable motor.

For other configurations/quick codes not available in this catalogue page please consult factory

## CURVES



## ORDERING CODES

Quick code	Description	Ports	
MD000034	MDAF-080-ANNR-NP-N10-N350	A,P,B,TA,TB: CETOP 5	