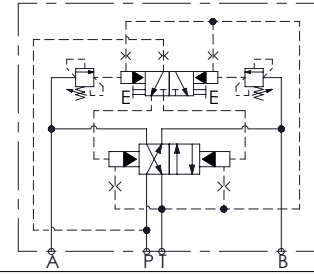


Dimensions: mm [inches]



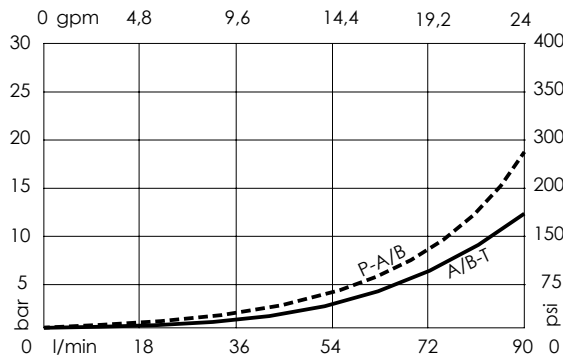
SPECIFICATIONS

Max. operating pressure:	350 bar (4300 psi)
Rated flow:	90 l/min (24 gpm)
Weight:	2,65 kg (5,84 lbs)
Manifold:	Cast Iron
Contamination class to ISO 4406:	See technical spec.
MTF _d :	150 - 1200 years: See technical spec.

NOTES

Minimum required flow: 3 l/min (0,8 gpm).
 For other configurations/quick codes not available in this catalogue page please consult factory

CURVES



ORDERING CODES

Quick code	Description	Ports	Standard setting Q=5 l/min (1,3 gpm)	Setting range	Pressure increase
MD000030	MDAP-090-NNNR-NP-N10-N350	A,B,P,T: CETOP 5	350 bar (5000 psi)	100-350 bar (1500-5000 psi)	95 bar/turn (1300 psi/turn)
MD000029	MDAP-090-NNNR-NP-N10-N200	A,B,P,T: CETOP 5	200 bar (2900 psi)	50-210 bar (700-3000 psi)	51 bar/turn (700 psi/turn)
MD000028	MDAP-090-NNNR-NP-N10-N100	A,B,P,T: CETOP 5	100 bar (1500 psi)	15-100 bar (200-1500 psi)	26 bar/turn (400 psi/turn)