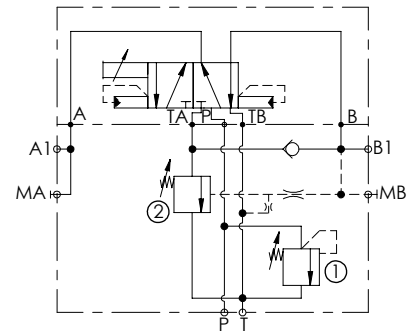
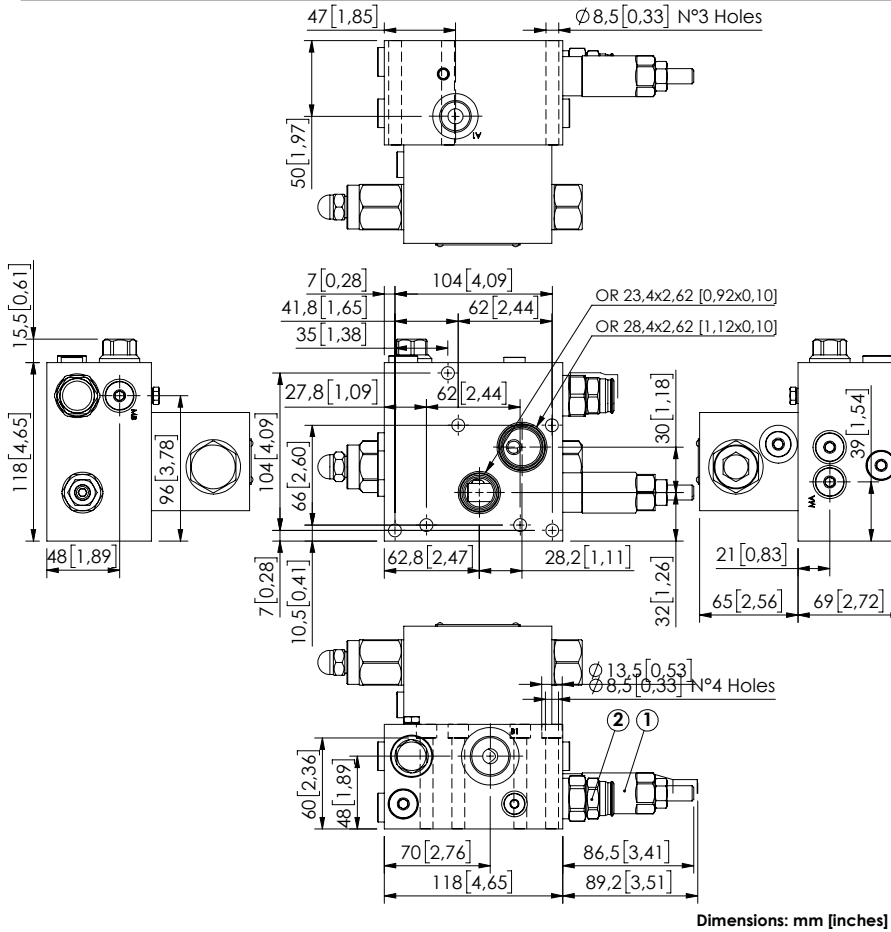


MDAF-080-BRNR

REGENERATIVE FUNCTION



SPECIFICATIONS

Max. operating pressure:	210 bar (3000 psi)
Rated flow:	80 l/min (21 gpm)
Manifold:	Aluminium
Weight:	5,99 kg (13,2 lbs)
Contamination class to ISO 4406:	See technical spec.
MTF _a :	150 - 1200 years: See technical spec.

NOTES

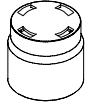
For other configurations/quick codes not available in this catalogue page please consult factory

SEALING CAP

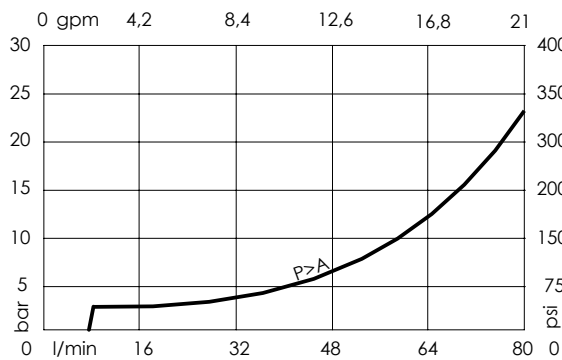
Ordering code:
AT000021
(Valve n°1)



Ordering code:
PT000243
(Valve n°2)



CURVES



ORDERING CODES

Quick code	Description	Ports	Standard setting Q=5 l/min (1,3 gpm)	Setting range	Pressure increase bar/turn (psi/turn)
MD000023	MDAF-080-BRNR-NP-N10-N210	P,A1: G 1/2" T,B1: G 3/4" MA,MB: G 1/4"	① 180 bar (2600 psi) ② 130 bar (1800 psi)	① 100-350 bar (1500-5000 psi) ② 70-140 bar (1000-2000 psi)	① 42 (600) ② -