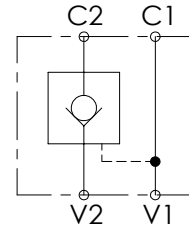
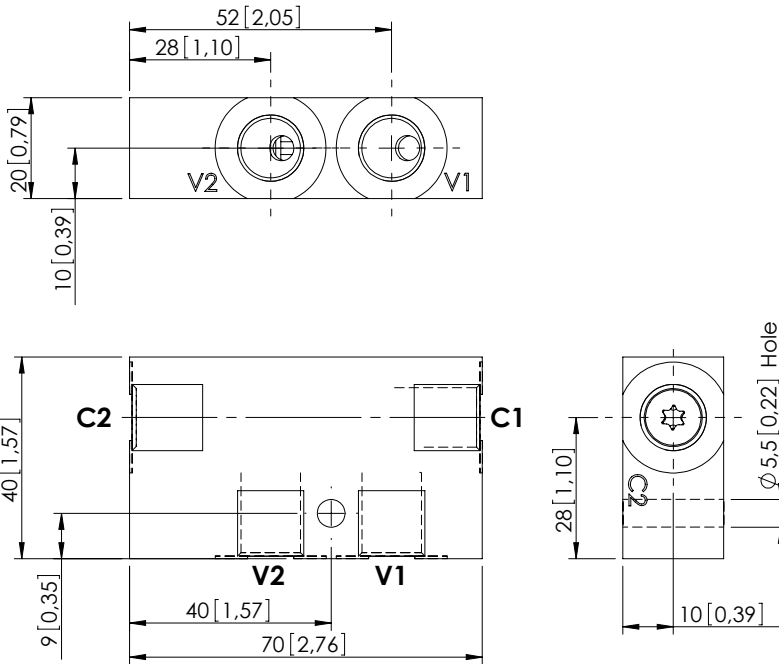


MCSN-020-SLAC

SINGLE ACTING



SPECIFICATIONS

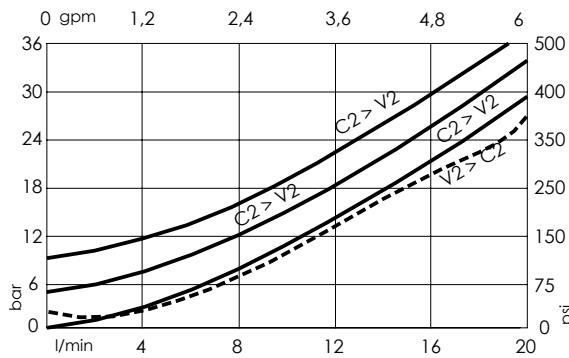
Max. operating pressure:	350 bar (5000 psi)
Rated flow:	20 l/min (6 gpm)
Manifold:	Steel
Weight:	0,36 kg (0,79 lbs)
Contamination class to ISO 4406:	See technical spec.
MTF _d :	150 - 1200 years: See technical spec.

Dimensions: mm [inches]

NOTES

For other configurations/quick codes not available in this catalogue page please consult factory

CURVES



ORDERING CODES

Quick code	Description	Main ports size	Pilot ratio	Cracking pressure	O-ring on pilot piston
MC000059	MCSN-020-SLAC-04-G14-N003	V1,V2,C1,C2 : G 1/4"	4:1	3 bar (50 psi)	YES
MC000094	MCSN-020-SLAC-04-G14-N008	V1,V2,C1,C2 : G 1/4"	4:1	8 bar (100 psi)	YES
MC000097	MCSN-020-SLAC-07-G14-N005	V1,V2,C1,C2 : G 1/4"	7:1	5 bar (75 psi)	YES