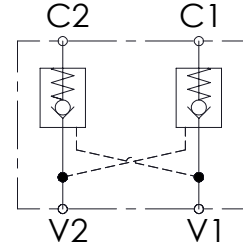
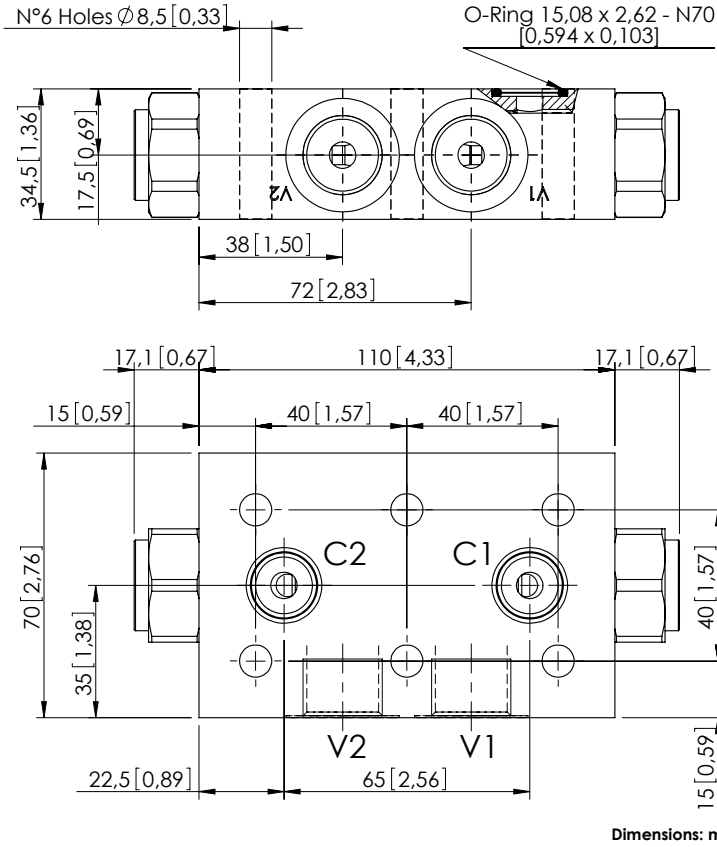


PILOT OPERATED CHECK VALVE

# MCDN-060-TBNS

DOUBLE ACTING  
TWO FLANGED PORTS



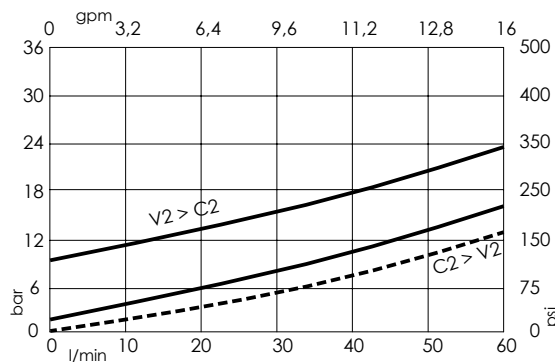
## SPECIFICATIONS

|                                  |                                       |
|----------------------------------|---------------------------------------|
| Max. operating pressure:         | 350 bar (5000 psi)                    |
| Rated flow:                      | 60 l/min (16 gpm)                     |
| Manifold:                        | Aluminium                             |
| Weight:                          | 0,9 kg (1,98 lbs)                     |
| Contamination class to ISO 4406: | See technical spec.                   |
| MTF <sub>a</sub> :               | 150 - 1200 years: See technical spec. |

## NOTES

For other configurations/quick codes not available in this catalogue page please consult factory

## CURVES



## ORDERING CODES

| Quick code | Description               | Main ports size          | Pilot ratio | Cracking pressure | O-ring on pilot piston |
|------------|---------------------------|--------------------------|-------------|-------------------|------------------------|
| MC000029   | MCDN-060-TBNS-03-G12-N001 | V1,V2:G 1/2"<br>C1,C2:Ø7 | 3:1         | 1 bar (15 psi)    | NO                     |
| MC000027   | MCDN-060-TBNS-03-G12-N008 | V1,V2:G 1/2"<br>C1,C2:Ø7 | 3:1         | 8 bar (100 psi)   | NO                     |
| MC000028   | MCDN-060-TBNC-03-G12-N008 | V1,V2:G 1/2"<br>C1,C2:Ø7 | 3:1         | 8 bar (100 psi)   | YES                    |
| MC000026   | MCDN-060-TBNS-06-G12-N001 | V1,V2:G 1/2"<br>C1,C2:Ø7 | 6:1         | 1 bar (15 psi)    | NO                     |
| MC000025   | MCDN-060-TBNS-06-G12-N008 | V1,V2:G 1/2"<br>C1,C2:Ø7 | 6:1         | 8 bar (100 psi)   | NO                     |
| MC000022   | MCDN-060-TBNC-06-G12-N008 | V1,V2:G 1/2"<br>C1,C2:Ø7 | 6:1         | 8 bar (100 psi)   | YES                    |