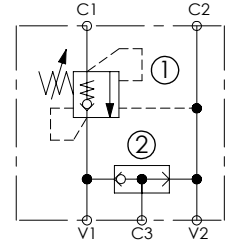
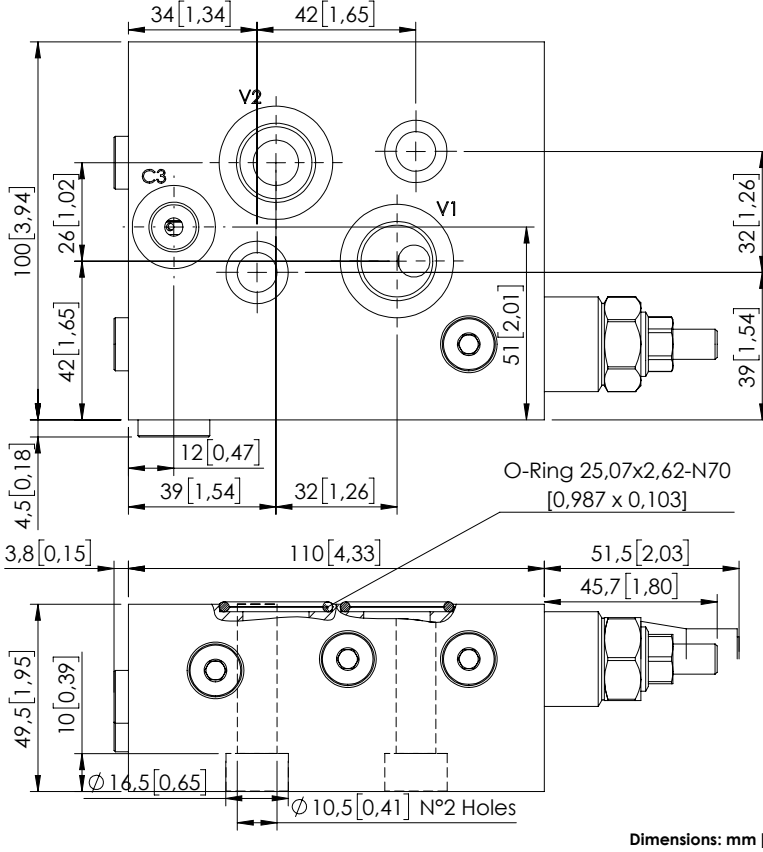


MBSN-060-ZMSF

OVERCENTRE
WITH BRAKE RELEASE



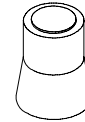
SPECIFICATIONS

Max. operating pressure:	350 bar (5000 psi)
Rated flow:	60 l/min (16 gpm)
Manifold:	Aluminium
Weight:	1,5 kg (3,31 lbs)
Contamination class to ISO 4406:	See technical spec.
MTF _a :	150 - 1200 years: See technical spec.

NOTES

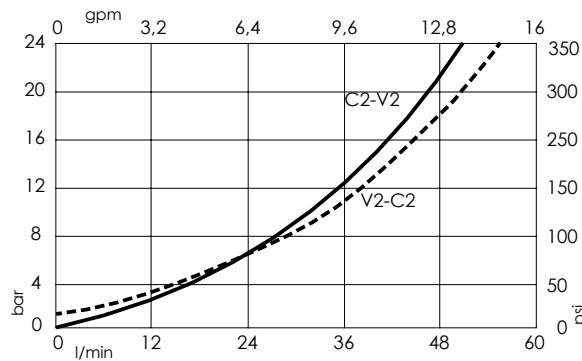
Setting: at least 1.3 times the load induced pressure.
Designed for DANFOSS motors OMS series.
For other configurations/quick codes not available in this catalogue page please consult factory

SEALING CAP



Ordering code:
AT000020

CURVES



ORDERING CODES

Quick code	Description	Pilot ratio	Main ports size	Standard setting Q=5 l/min (1,3 gpm)	Adjustment range	Pressure increase
MB001036	MBSN-060-ZMSF-04-G12-N350-NOMS	4,2:1	V1, V2: G1/2" C1, C2: OMS flange C3: G 1/4"	350 bar (5000 psi)	100-350 bar (3600-5000 psi)	139 bar/turn (2000 psi/turn)
MB001058	MBSN-060-ZMSF-04-G12-N200-NOMS	4,2:1	V1, V2: G1/2" C1, C2: OMS flange C3: G 1/4"	200 bar (2900 psi)	60-210 bar (850-3000 psi)	62 bar/turn (900 psi/turn)