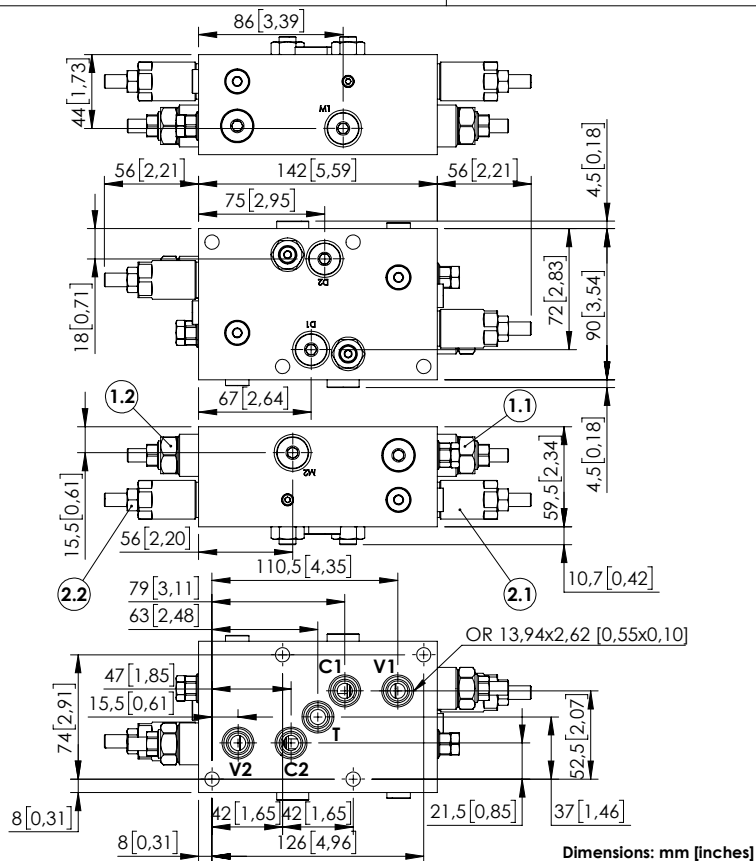
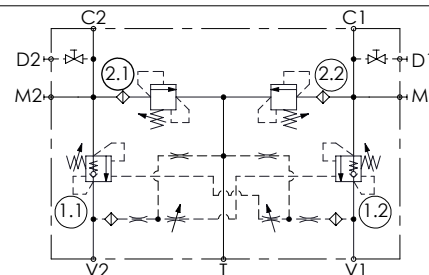


MBSN-060-ZENV



Dimensions: mm [inches]



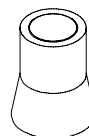
SPECIFICATIONS

Max. operating pressure:	500 bar (7200 psi)
Rated flow:	60 l/min (16 gpm)
Manifold:	Steel
Weight:	2,63 kg (5,7 lbs)
Contamination class to ISO 4406:	See technical spec.
MTFa:	150 years

NOTES

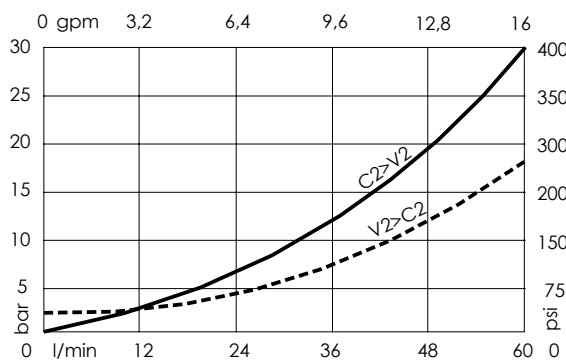
Setting: at least 1.3 times the load induced pressure.
For other configurations/quick codes not available in this catalogue page please consult factory

SEALING CAP



Ordering code:
AT000020

CURVES



ORDERING CODES

Quick code	Description	Pilot ratio	Ports	Standard setting Q=5 l/min (1,3 gpm)	Adjustment range	Pressure increase bar/turn (psi/turn)
MB000931	MBDN-060-ZENV-04-TPF-N500	4:1	C1,C2,V1,V2,T: Ø9 M1,M2: G 1/4"	① 400 bar (5800 psi) ② 390 bar (5600 psi)	① 200-420 bar (2900-6000 psi) ② 100-350 bar (1500-5000 psi)	① 150 (2200) ② 106 (1500)