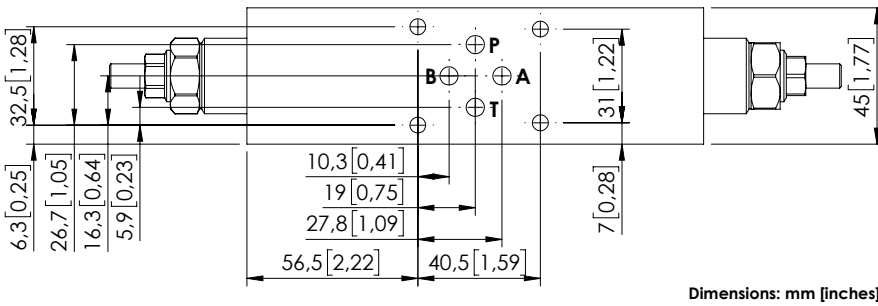
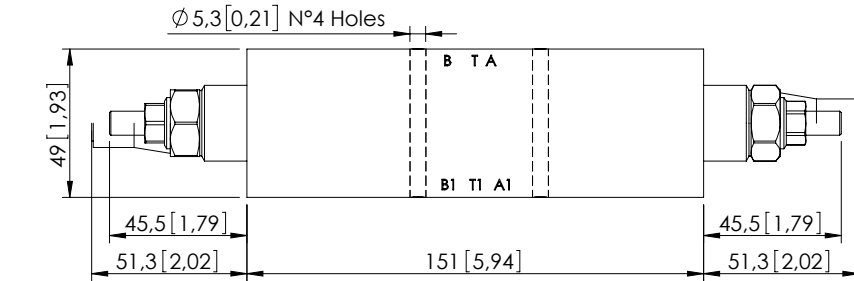
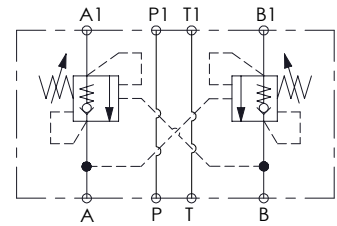
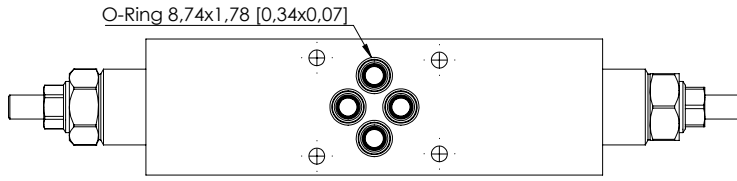


# MBDN-060-ATNR

DOUBLE ACTING  
CETOP 3



Dimensions: mm [inches]

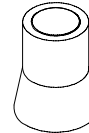
## SPECIFICATIONS

Max. operating pressure:	350 bar (5000 psi)
Rated flow:	60 l/min (16 gpm)
Manifold:	Steel
Weight:	2,61 kg (5,7 lbs)
Contamination class to ISO 4406:	See technical spec.
MTTFa:	150 - 1200 years: See technical spec.

## NOTES

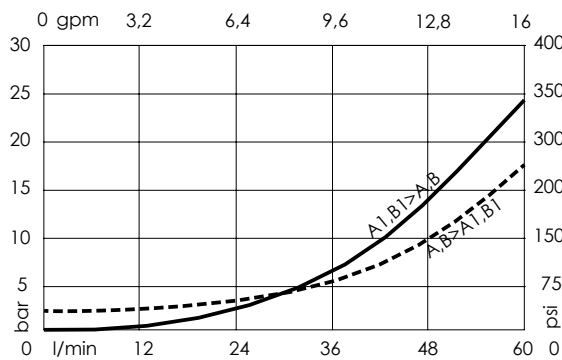
**Setting:** at least 1.3 times the load induced pressure.  
For other configurations/quick codes not available in this catalogue page please consult factory

## SEALING CAP



Ordering code:  
AT000020

## CURVES



## ORDERING CODES

Quick code	Description	Pilot ratio	Ports	Standard setting Q=5 l/min (1,3 gpm)	Adjustment range	Pressure increase
MB000929	MBDN-060-ATNR-04-N06-N350	4,2:1	A,B,P,T: CETOP 3	350 bar (5000 psi)	100-350 bar (1400-5000 psi)	138 bar/turn (2000 psi/turn)
MB000774	MBDN-060-ATNR-04-N06-N200	4,2:1	A,B,P,T: CETOP 3	200 bar (2900 psi)	60-210 bar (850-3000 psi)	62 bar/turn (850 psi/turn)