

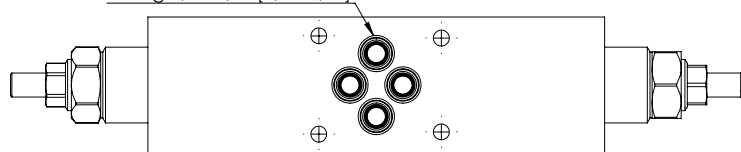
MODULAR VALVE FOR CETOP

MBDN-060-ATNR

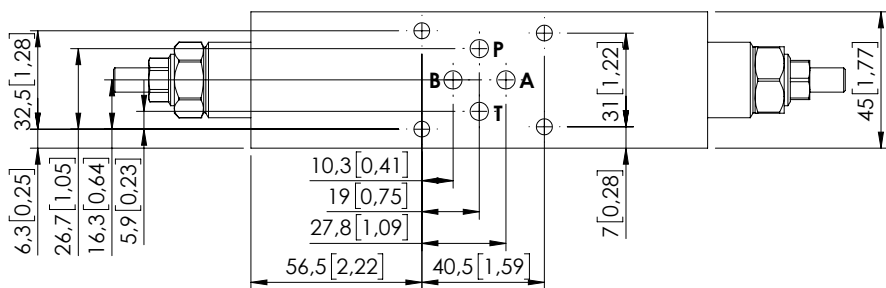
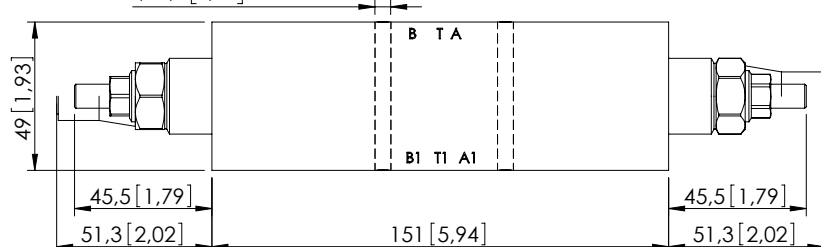
DOUBLE ACTING
CETOP 3



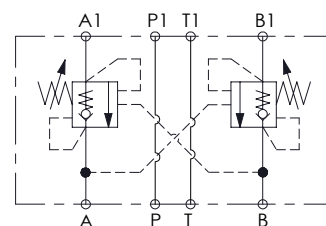
O-Ring 8,74x1,78 [0,34x0,07]



Ø 5,3 [0,21] N°4 Holes



Dimensions: mm [inches]



SPECIFICATIONS

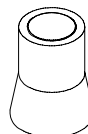
Max. operating pressure:	350 bar (5000 psi)
Rated flow:	60 l/min (16 gpm)
Manifold:	Steel
Weight:	2,61 kg (5,7 lbs)
Contamination class to ISO 4406:	See technical spec.
MTTFa:	150 years

NOTES

Setting: at least 1.3 times the load induced pressure.

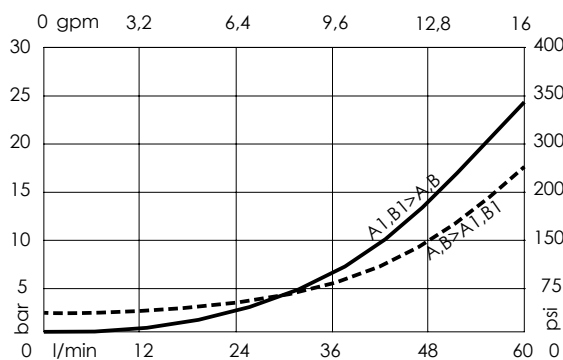
For other configurations/quick codes not available in this catalogue page please consult factory

SEALING CAP



Ordering code:
AT000020

CURVES



ORDERING CODES

Quick code	Description	Pilot ratio	Ports	Standard setting Q=5 l/min (1,3 gpm)	Adjustment range	Pressure increase
MB000929	MBDN-060-ATNR-04-N06-N350	4,2:1	A,B,P,T: CETOP 3	350 bar (5000 psi)	100-350 bar (1400-5000 psi)	138 bar/turn (2000 psi/turn)
MB000774	MBDN-060-ATNR-04-N06-N200	4,2:1	A,B,P,T: CETOP 3	200 bar (2900 psi)	60-210 bar (850-3000 psi)	62 bar/turn (850 psi/turn)