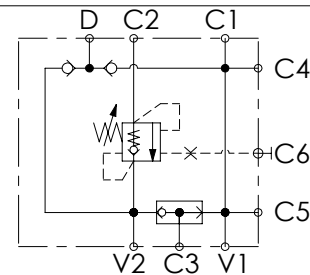
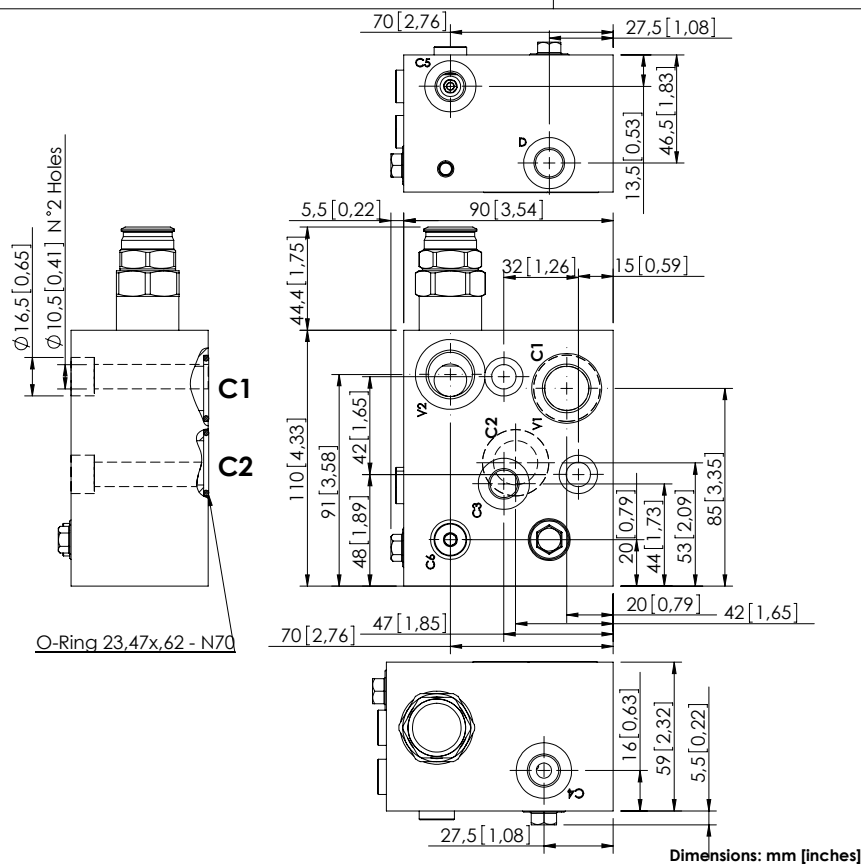


MBSN-100-ZMSF

PILOT ASSISTED
OVERCENTRE

SPECIFICATIONS

Max. operating pressure:	350 bar (5000 psi)
Rated flow:	100 l/min (26 gpm)
Manifold:	Aluminium
Weight:	1,61 kg (3,55 lbs)
Contamination class to ISO 4406:	See technical spec.
MTFa:	150 years

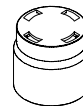
NOTES

Setting: at least 1.3 times the load induced pressure.

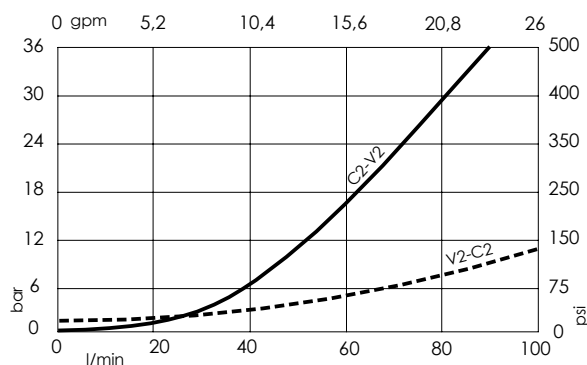
Designed for DANFOSS motors OMS series.

For other configurations/quick codes not available in this catalogue page please consult factory

SEALING CAP

Ordering code:
PT000243

CURVES



ORDERING CODES

Quick code	Description	Pilot ratio	Main ports size	Standard setting Q=5 l/min (1,3 gpm)	Adjustment range	Pressure increase
MB000925	MBSN-100-ZMSF-04-G12-N350	4:1	V1,V2: G1/2" C6: G1/8" C1,C2: Ø19 D,C3,C4,C5: G1/4"	250 bar (3600 psi)	100-350 bar (1400-5000 psi)	124 bar/turn (1800 psi/turn)