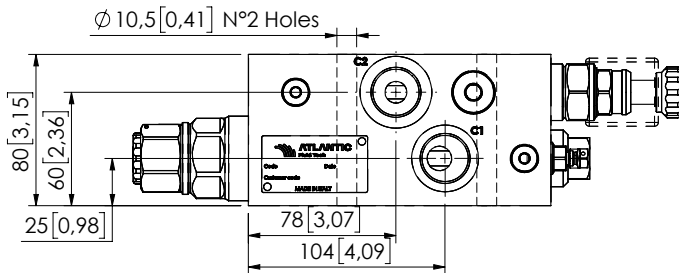
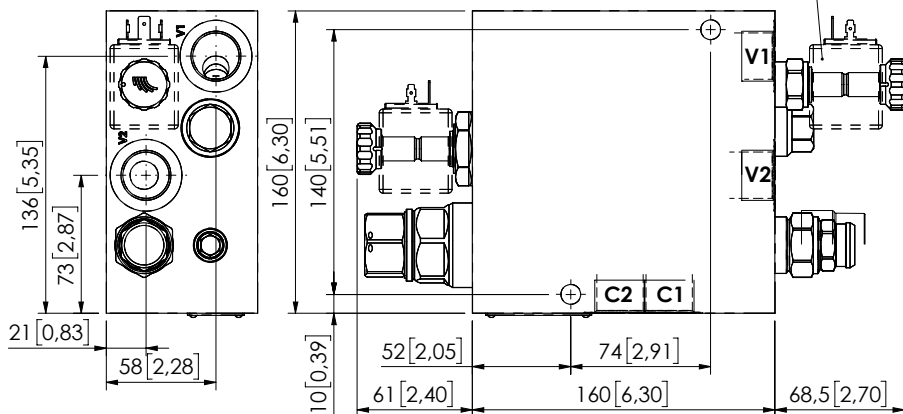


MRSN-150-ALBE

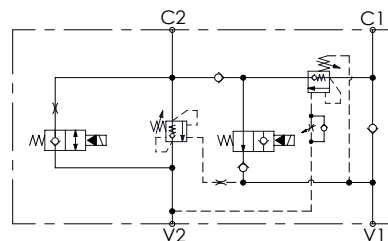
REGENERATIVE
WITH ELECTRIC BY-PASS



Coil type M7 or M3
not included and
to be ordered
separately



Dimensions: mm [inches]



SPECIFICATIONS

Max. operating pressure:	350 bar (5000 psi)
Rated flow:	150 l/min (40 gpm)
Manifold:	Steel
Coil type:	M7 or M3 type
Weight:	14,95 kg (32,95 lbs)
Contamination class to ISO 4406:	See technical spec.
MTTF _a :	150 years

NOTES

Setting: at least 1.3 times the load induced pressure.

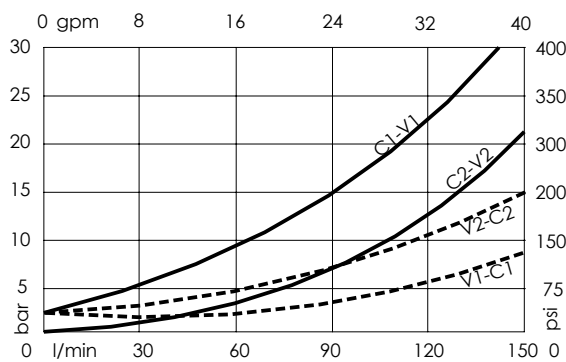
For other configurations/quick codes not available in this catalogue page please consult factory

SEALING CAP



Ordering code:
ST000012

CURVES



ORDERING CODES

Quick code	Description	Pilot ratio	Ports	Standard setting Q=5 l/min (1,3 gpm)	Adjustment range	Pressure increase
MB000920	MRSN-150-ALBE-04-G34-N350	4:1	V1,V2: G 3/4" C1,C2: G 3/4"	350 bar (5000 psi)	100-350 bar (1500-5000 psi)	104 bar/turn (1500 psi/turn)