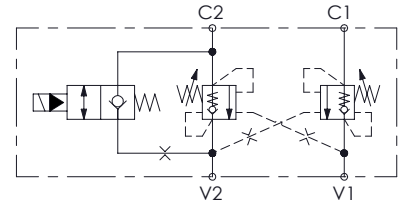
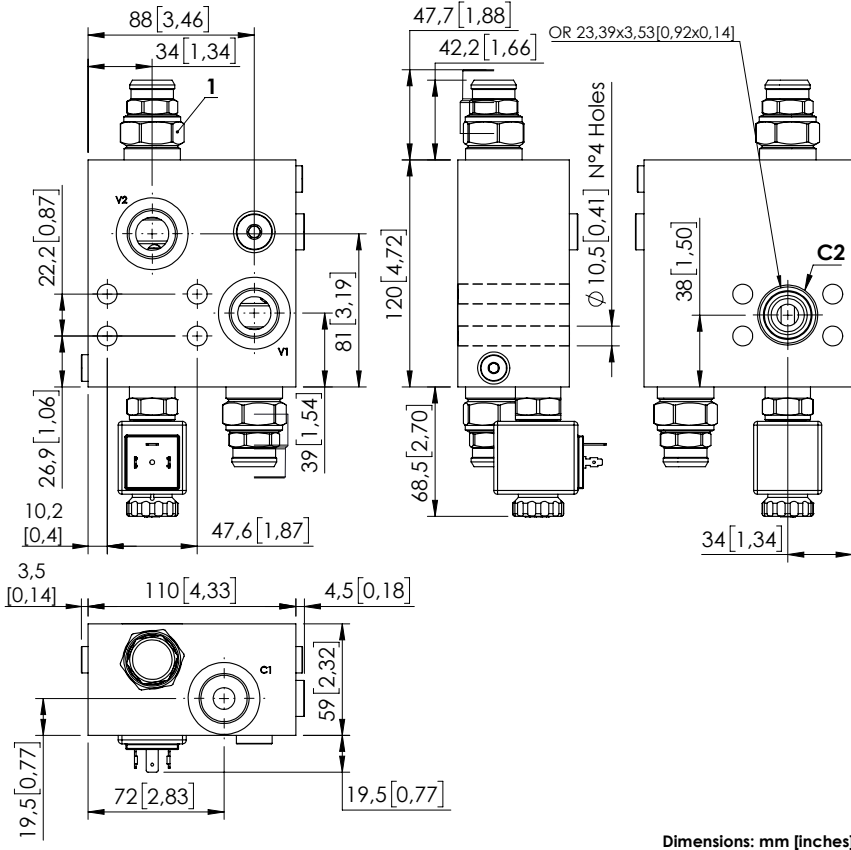


MBDN-150-ZABE

DOUBLE ACTING
WITH ELECTRIC BY-PASS



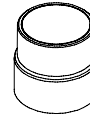
SPECIFICATIONS

Max. operating pressure:	350 bar (5000 psi)
Rated flow:	150 l/min (40 gpm)
Manifold:	Steel
Coil type:	M7
Voltage:	26V
Weight:	2,76 kg (6 lbs)
Contamination class to ISO 4406:	See technical spec.
MTFa:	150 - 1200 years: See technical spec.

NOTES

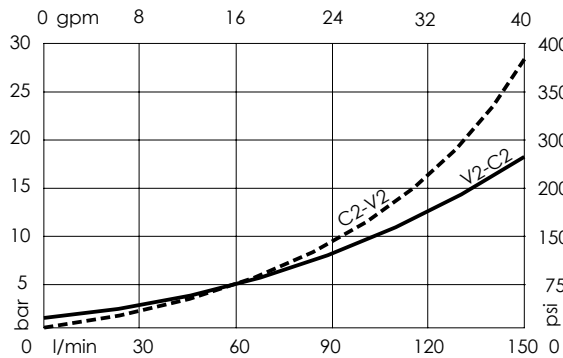
Setting: at least 1.3 times the load induced pressure.
For other configurations/quick codes not available in this catalogue page please consult factory

SEALING CAP



Ordering code:
ST000012

CURVES



ORDERING CODES

Quick code	Description	Pilot ratio	Ports	Standard setting Q=5 l/min (1.3 gpm)	Adjustment range	Pressure increase
MB000915	MBDN-150-ZABE-04-G34-N350	4:1	V1,V2,C1: G 3/4" C2: 3/4" SAE 6000	350 bar (5000 psi)	100-350 bar (1500-5000 psi)	104 bar/turn (1500 psi/turn)