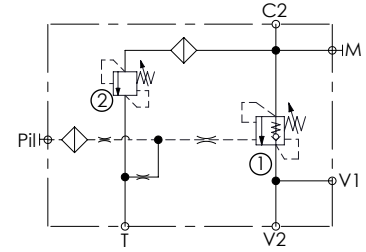
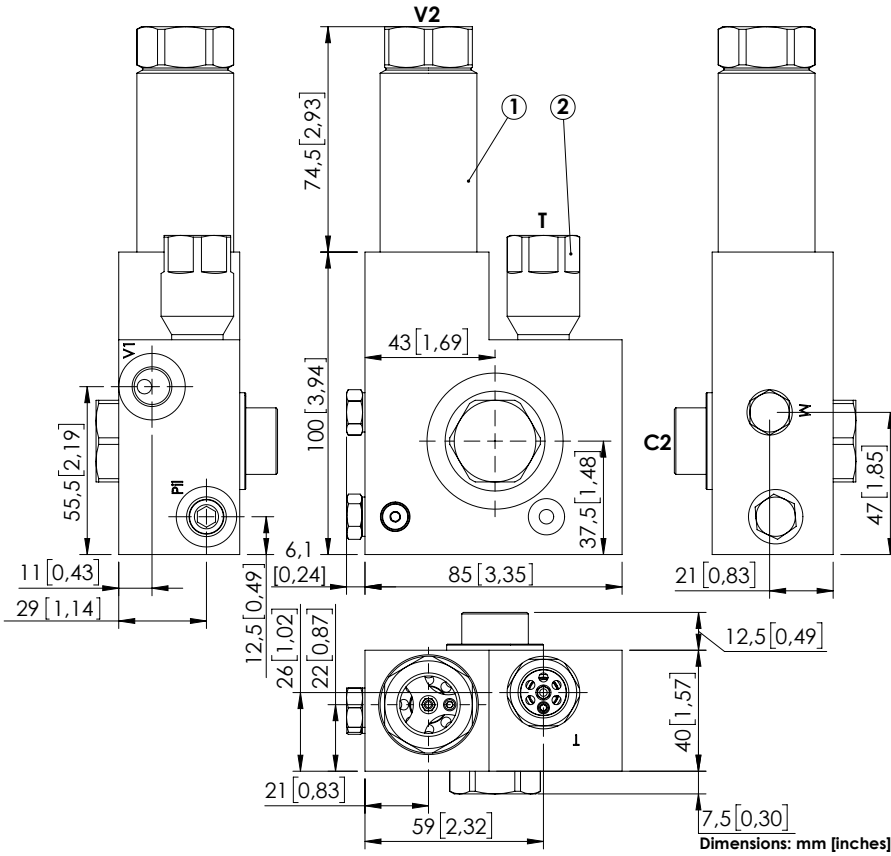


MBSN-080-APST



SPECIFICATIONS

Max. operating pressure:	500 bar (7200 psi)
Rated flow:	80 l/min (21 gpm)
Manifold:	Steel
Weight:	2.50 kg (5.3 lbs)
Contamination class to ISO 4406:	See technical spec.
MTF _a :	150 - 1200 years: See technical spec.

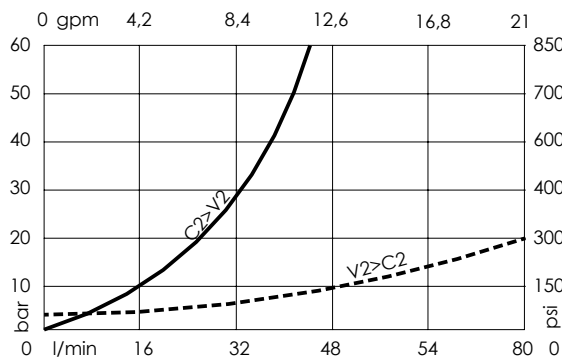
NOTES

Setting: at least 1.3 times the load induced pressure.

Operative pilot ratio: 2,3:1

For other configurations/quick codes not available in this catalogue page please consult factory

CURVES



ORDERING CODES

Quick code	Description	Pilot ratio	Ports	Standard setting Q=5 l/min (1,3 gpm)	Adjustment range	Pressure increase bar/turn (psi/turn)
MB000913	MBSN-080-APST-02-M22-N500	7:1	V1, Pilt: G 1/4" V2: G 1/2" T: G 3/8" C2: M22x1,5 M: M8x1	① 380 bar (5500 psi) ② 400 bar (5800 psi)	① 200-450 bar (2900-6500 psi) ② 250-450 bar (3600-6500 psi)	① 366 (5300) ② 195 (2800)