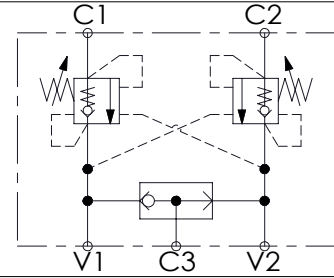
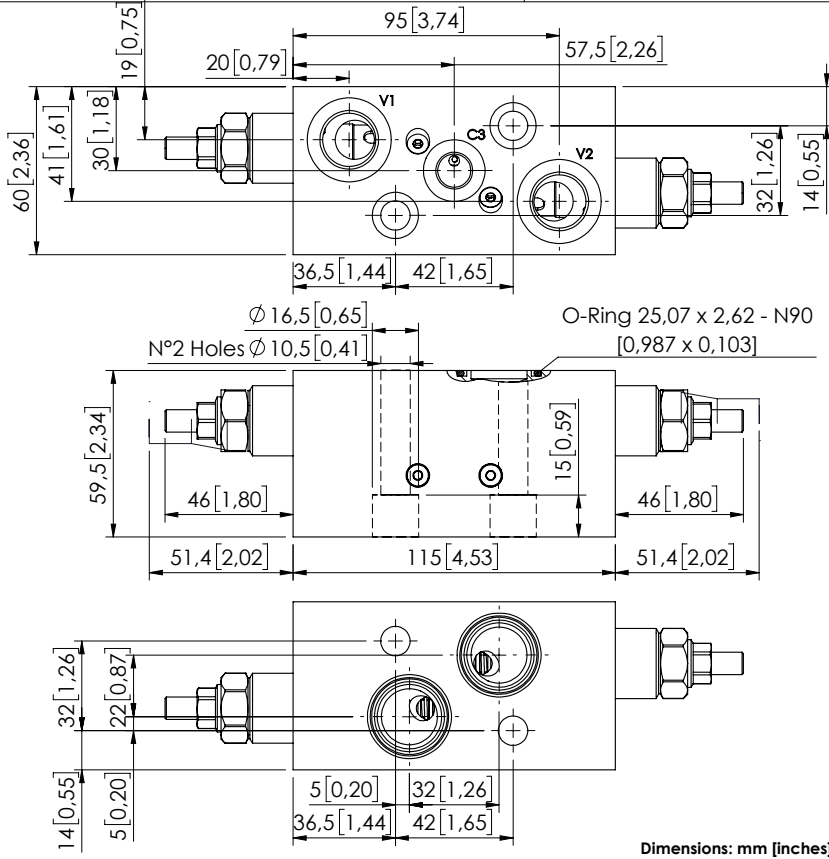


MBDN-060-ZMSF

DOUBLE ACTING WITH
BRAKE RELEASE



SPECIFICATIONS

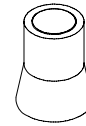
Max. operating pressure:	250 bar (3600 psi)
Rated flow:	60 l/min (16 gpm)
Manifold:	Aluminium
Weight:	1,231 kg (2,91 lbs)
Contamination class to ISO 4406:	See technical spec.
MTTF _a :	150 - 1200 years: See technical spec.

NOTES

Designed for OMS motors.

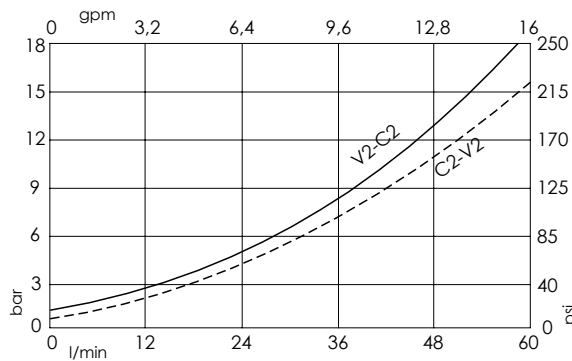
For other configurations/quick codes not available in this catalogue page please consult factory

SEALING CAP



Ordering code:
AT000020

CURVES



ORDERING CODES

Quick code	Description	Pilot ratio	Main ports size	Standard setting Q=5 l/min (1,3 gpm)	Adjustment range	Pressure increase
MB000908	MBDN-060-LMSF-11-G12-N250	11:1	V1,V2: G1/2" C1,C2:Ø9 C3:G1/4"	250 bar (3600 psi)	100-420 bar (1400-6000 psi)	69 bar/turn (1000 psi/turn)