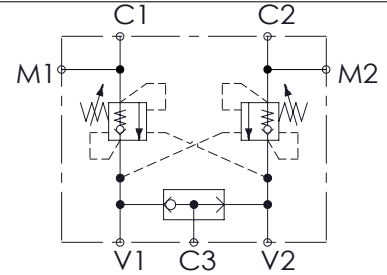
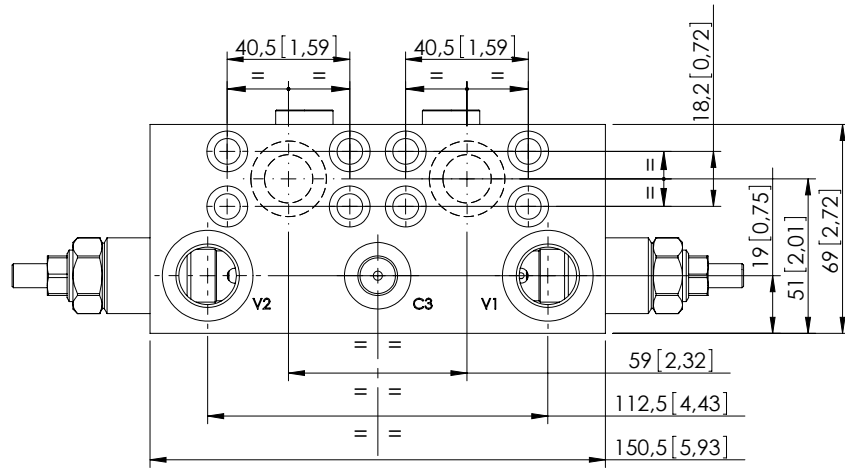


MBDN-060-ABSF

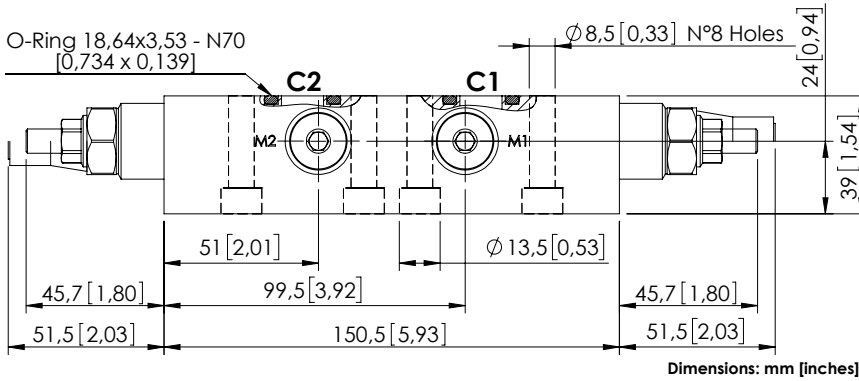
DUAL PILOT
WITH BRAKE RELEASE



SPECIFICATIONS

Max. operating pressure:	350 bar (5000 psi)
Rated flow:	60 l/min (16 gpm)
Manifold:	Steel
Weight:	2,91 kg (6,42 lbs)
Contamination class to ISO 4406:	See technical spec.
MTF _a :	150 - 1200 years: See technical spec.

O-Ring 18,64x3,53 - N70
[0,734 x 0,139]

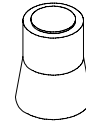


Dimensions: mm [inches]

NOTES

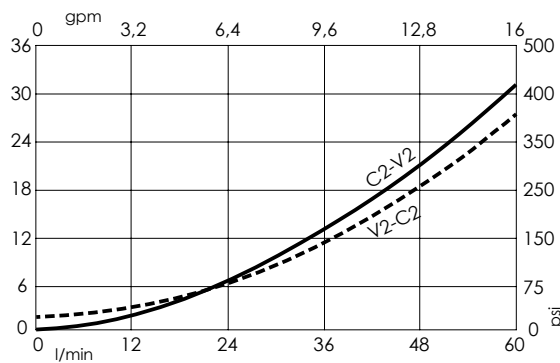
Setting: at least 1.3 times the load induced pressure.
Designed for REXROTH motors A2FE-28-32 series.
For other configurations/quick codes not available in this catalogue page please consult factory

SEALING CAP



Ordering code:
AT000020

CURVES



ORDERING CODES

Quick code	Description	Pilot ratio	Main ports size	Standard setting Q=5 l/min (1,3 gpm)	Adjustment range	Pressure increase
MB000868	MBDN-060-ABSF-04-G12-N350	4:1	V1,V2: G1/2" C3,M1,M2: G1/4" C1,C2: Ø14	170 bar (2500 psi)	100-350 bar (1400-5000 psi)	139 bar/turn (2000 psi/turn)