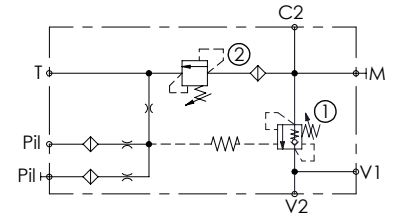
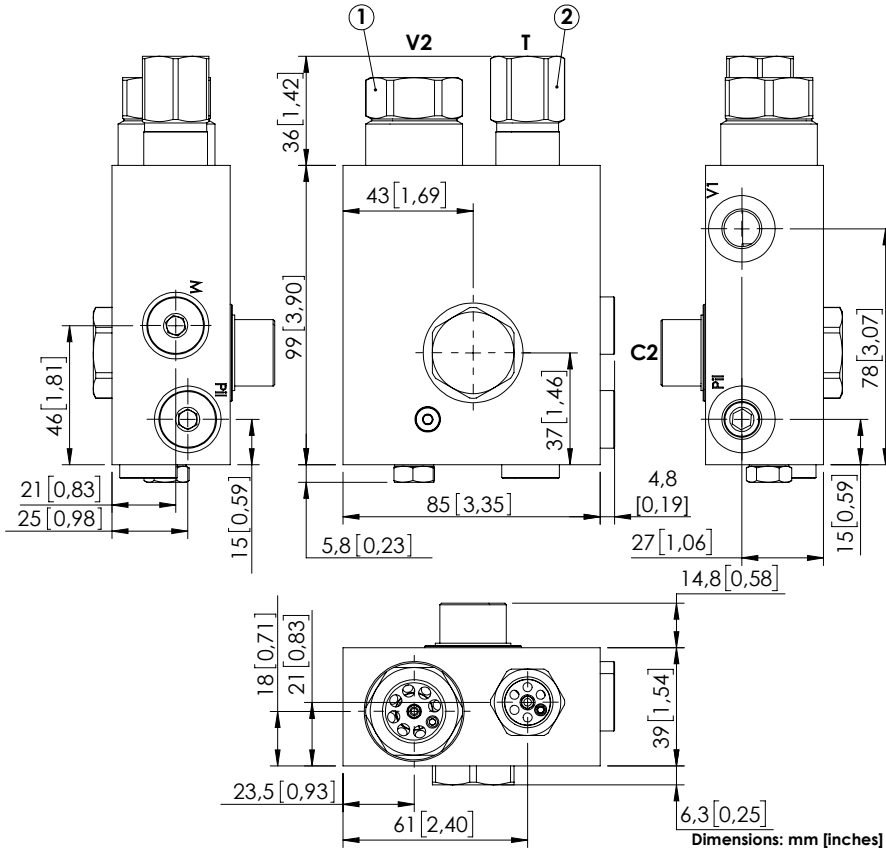


MBSN-060-APST



SPECIFICATIONS

Max. operating pressure:	420 bar (6000 psi)
Rated flow:	60 l/min (16 gpm)
Manifold:	Steel
Weight:	2,61 kg (5,7 lbs)
Contamination class to ISO 4406:	See technical spec.
MTF _a :	150 - 1200 years: See technical spec.

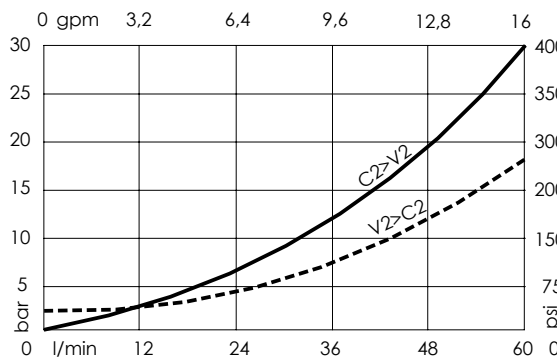
NOTES

Setting: at least 1.3 times the load induced pressure.

Pilot ratio: 7:1

For other configurations/quick codes not available in this catalogue page please consult factory

CURVES



ORDERING CODES

Quick code	Description	Oper. pilot ratio	Ports	Standard setting Q=5 l/min (1,3 gpm)	Adjustment range	Pressure increase bar/turn (psi/turn)
MB000823	MBSN-060-APST-01-M22-N420	1,5:1	V1, Pil, M: G 1/4" V2: G 1/2" T: G 3/8" C2: M22x1,5	① 380 bar (5500 psi) ② 400 bar (5800 psi)	① 200-420 bar (2900-6000 psi) ② 250-450 bar (3600-6500 psi)	① 366 (5300) ② 167 (2400)
MB000824	MBSN-060-APST-02-M22-N420	2,3:1	V1, Pil, M: G 1/4" V2: G 1/2" T: G 3/8" C2: M22x1,5	① 210 bar (3000 psi) ② 230 bar (3300 psi)	① 200-420 bar (2900-6000 psi) ② 250-450 bar (3600-6500 psi)	① 366 (5300) ② 167 (2400)