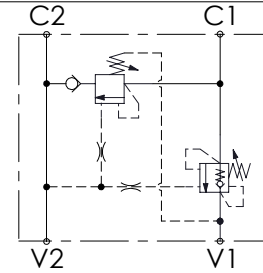
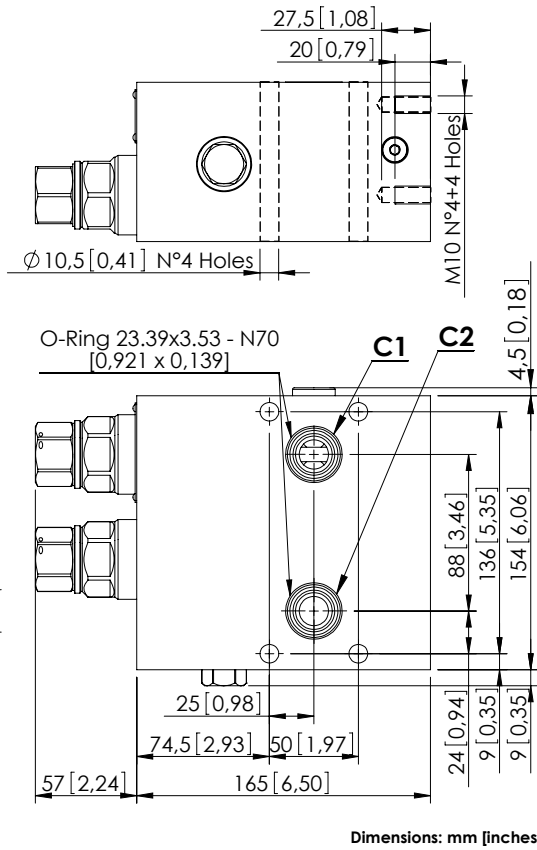


# MRSN-300-ABNV

REGENERATIVE



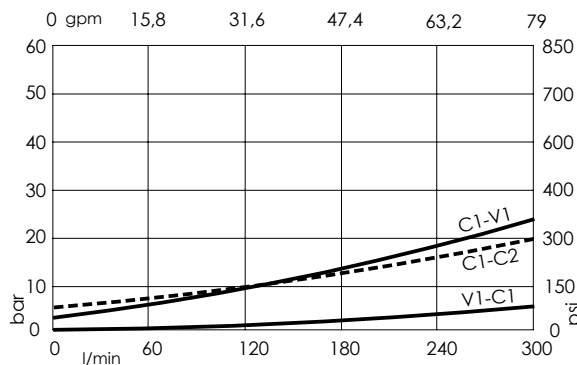
## SPECIFICATIONS

Max. operating pressure:	420 bar (6000 psi)
Rated flow:	300 l/min (79 gpm)
Manifold:	Steel
Weight:	16.86 kg (37,17 lbs)
Contamination class to ISO 4406:	See technical spec.
MTTF <sub>a</sub> :	150 - 1200 years: See technical spec.

## NOTES

- Setting: at least 1.3 times the load induced pressure.
- Designed for aerial platforms.
- For other configurations/quick codes not available in this catalogue page please consult factory

## CURVES



## ORDERING CODES

Quick code	Description	Pilot ratio	Main ports size	Standard setting Q=5 l/min (1,3 gpm)	Adjustment range	Pressure increase
MB000816	MRSN-300-ABNV-06-S34-N420	6:1	V1,V2: 3/4" SAE 6000 C1,C2: $\varnothing 16,5$	250 bar (3600 psi)	120-360 bar (1700-3600 psi)	122 bar/turn (1800 psi/turn)