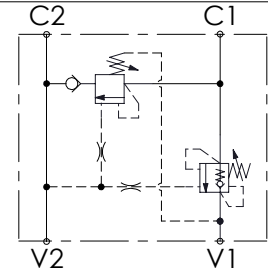
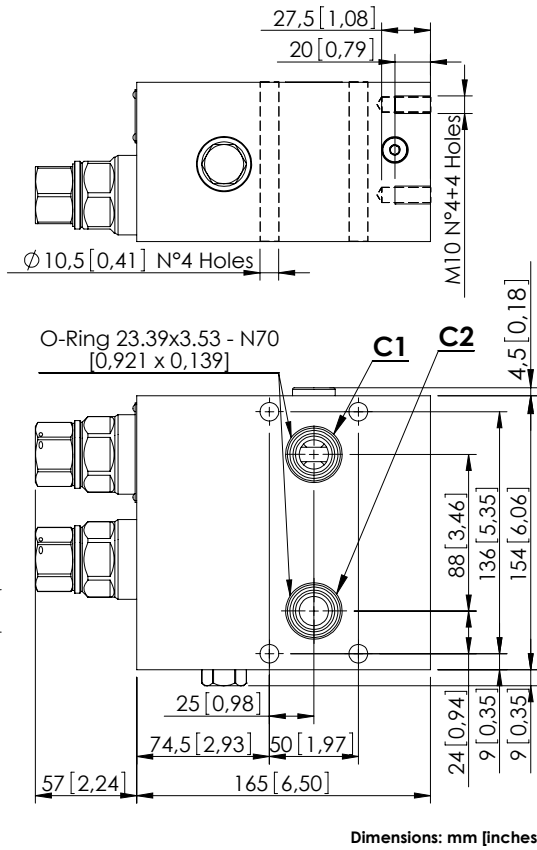


MRSN-300-ABNV

REGENERATIVE



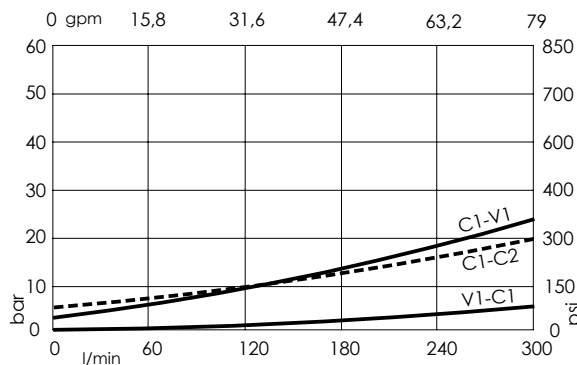
SPECIFICATIONS

| | |
|----------------------------------|---------------------------------------|
| Max. operating pressure: | 420 bar (6000 psi) |
| Rated flow: | 300 l/min (79 gpm) |
| Manifold: | Steel |
| Weight: | 16,86 kg (37,17 lbs) |
| Contamination class to ISO 4406: | See technical spec. |
| MTTF _a : | 150 - 1200 years: See technical spec. |

NOTES

- Setting: at least 1.3 times the load induced pressure.
- Designed for aerial platforms.
- For other configurations/quick codes not available in this catalogue page please consult factory

CURVES



ORDERING CODES

| Quick code | Description | Pilot ratio | Main ports size | Standard setting Q=5 l/min (1,3 gpm) | Adjustment range | Pressure increase |
|------------|---------------------------|-------------|---|---|--------------------------------|---------------------------------|
| MB000816 | MRSN-300-ABNV-06-S34-N420 | 6:1 | V1,V2: 3/4" SAE 6000 C1,C2: $\varnothing 16,5$ | 250 bar (3600 psi) | 120-360 bar (1700-3600 psi) | 122 bar/turn (1800 psi/turn) |
| | | | | | | |
| | | | | | | |
| | | | | | | |
| | | | | | | |