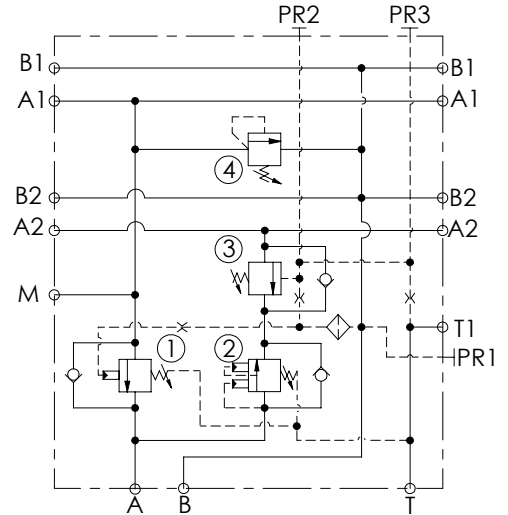
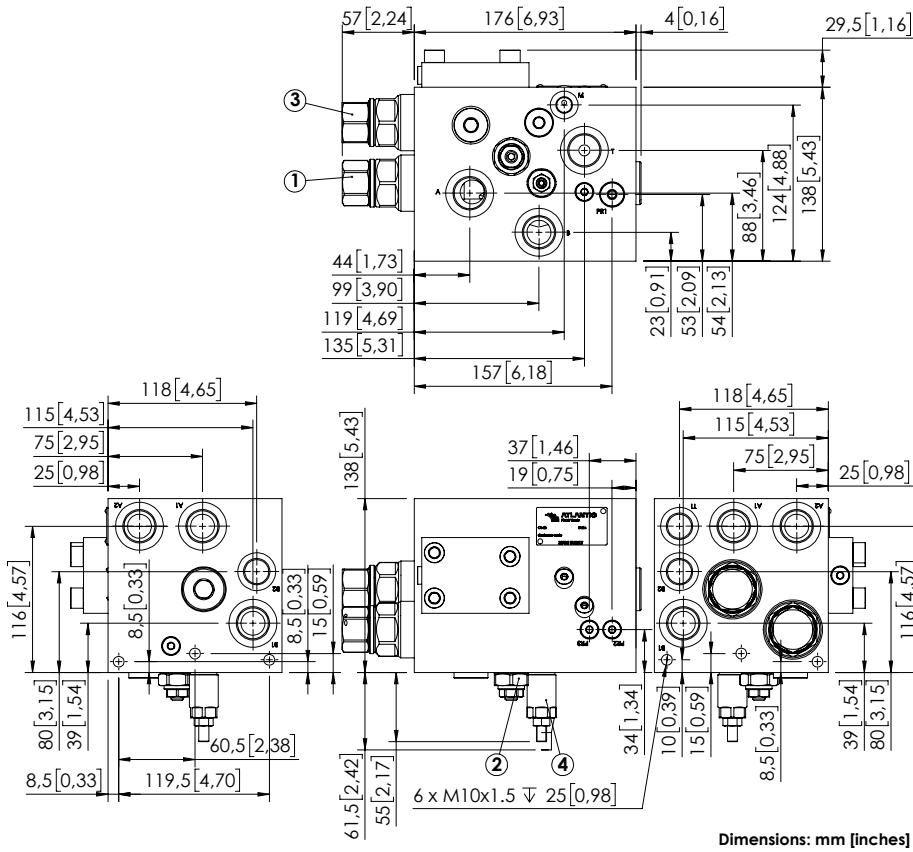


# MRDN-150-ZLNP



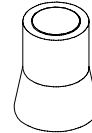
### SPECIFICATIONS

Max. operating pressure:	350 bar (5000 psi)
Rated flow:	150 l/min (40 gpm)
Manifold:	Aluminium
Weight:	10,18 kg (22,4 lbs)
Contamination class to ISO 4406:	See technical spec.
MTF <sub>d</sub> :	150 - 1200 years: See technical spec.

### NOTES

For other configurations/quick codes not available in this catalogue page please consult factory

### SEALING CAP



Ordering code:  
AT000020

### CURVES

### ORDERING CODES

Quick code	Description	Pilot ratio	Ports	Standard setting Q=5 l/min (1,3 gpm)	Adjustment range	Pressure increase bar/turn (psi/turn)
MB000700	MRDN-150-ZLNP-06-G34-N350	4:1	A, A1, A2, B, B1, T: G3/4" B2, T1: G1/2" T2, M1, T3: G1/4"	① 300 bar (4300 psi) ② 175 bar (2500 psi) ③ 350 bar (5000 psi) ④ 280 bar (4000 psi)	① 100-350 bar (1500-5000 psi) ② 140-350 bar (2000-5000 psi) ③ 60-210 bar (850-3000 psi) ④ 100-350 bar (1500-5000 psi)	① 105 (1500) ② 70,5 (1000) ③ 62 (850) ④ 91 (1300)