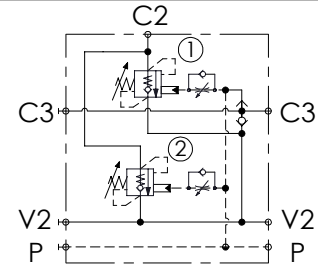
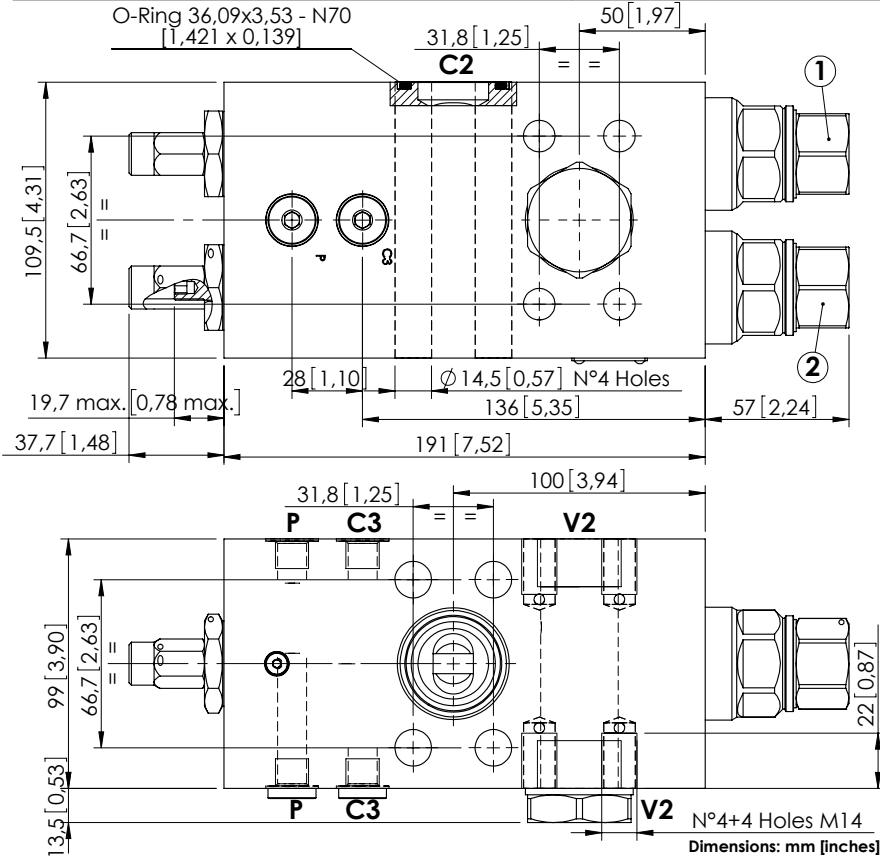


# MBDN-500-AMSF

DOUBLE ACTING  
WITH BRAKE RELEASE



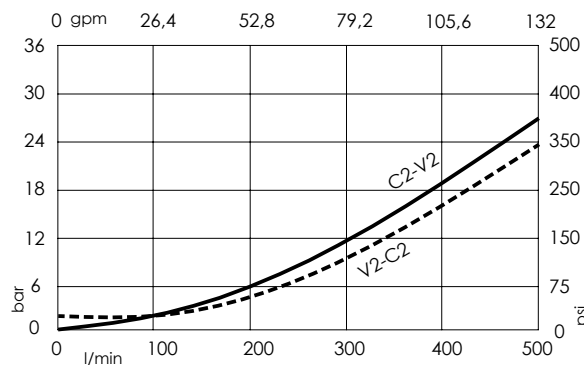
## SPECIFICATIONS

Max. operating pressure:	500 bar (7200 psi)
Rated flow:	500 l/min (132 gpm)
Manifold:	Steel
Weight:	15,22 kg (33,55 lbs)
Contamination class to ISO 4406:	See technical spec.
MTF <sub>d</sub> :	150 - 1200 years: See technical spec.

## NOTES

Setting: at least 1.3 times the load induced pressure.  
For other configurations/quick codes not available in this catalogue page please consult factory

## CURVES



## ORDERING CODES

Quick code	Description	Pilot ratio	Main ports size	Standard setting Q=5 l/min (1,3 gpm)	Adjustment range	Pressure increase
MB000676	MBDN-500-AMSF-13-S11-N500	13:1	C2,V2: 1-1/4" SAE 6000 P,E,C3: G 1/4"	500 bar (7200 psi)	250-500 bar (3600-7200 psi)	104 bar/turn (1500 psi/turn)