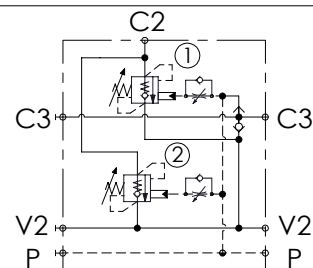
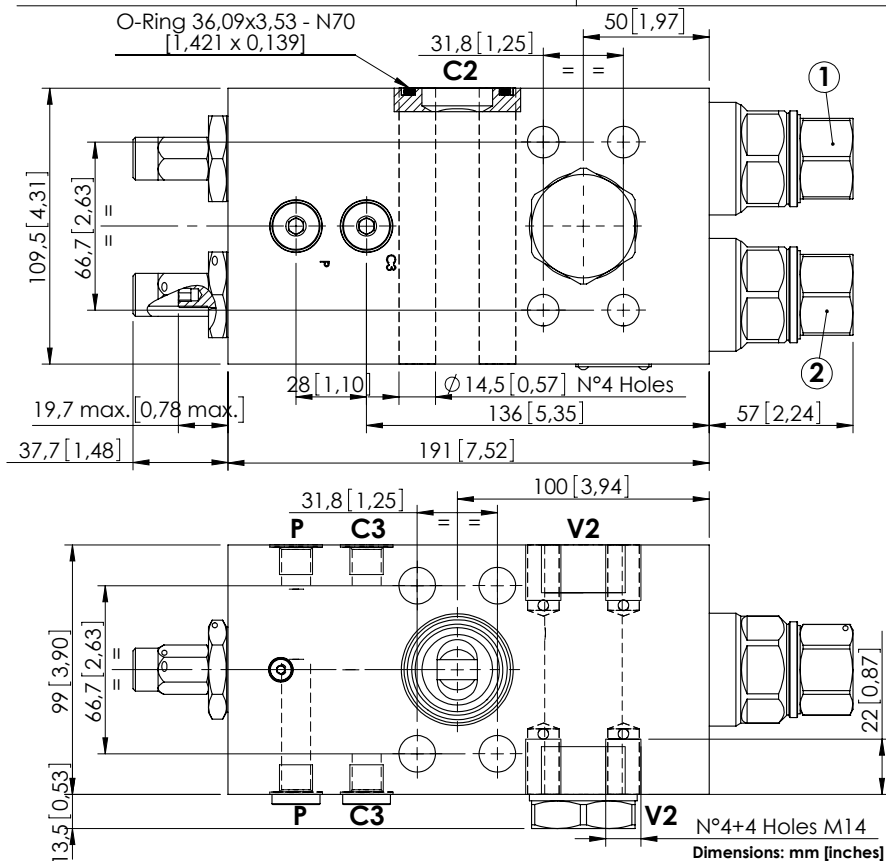


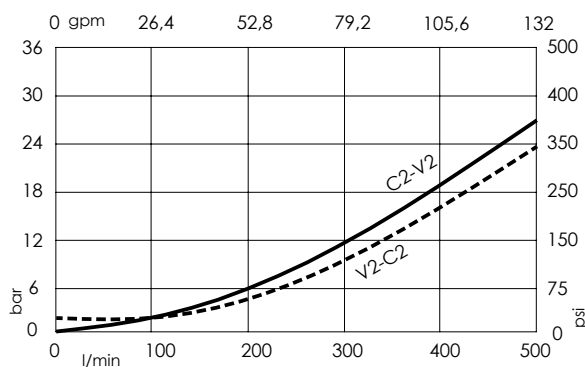
**MBDN-500-AMSF****DOUBLE ACTING  
WITH BRAKE RELEASE****SPECIFICATIONS**

Max. operating pressure:	<b>500 bar (7200 psi)</b>
Rated flow:	<b>500 l/min (132 gpm)</b>
Manifold:	<b>Steel</b>
Weight:	<b>15,22 kg (33,55 lbs)</b>
Contamination class to ISO 4406:	See technical spec.
MTFa:	<b>150 years</b>

**NOTES**

Setting: at least 1.3 times the load induced pressure.

For other configurations/quick codes not available in this catalogue page please consult factory

**CURVES****ORDERING CODES**

Quick code	Description	Pilot ratio	Main ports size	Standard setting Q=5 l/min (1,3 gpm)	Adjustment range	Pressure increase
MB000676	MBDN-500-AMSF-13-S11-N500	13:1	C2,V2: 1-1/4" SAE 6000 P,E,C3: G 1/4"	<b>500 bar (7200 psi)</b>	<b>250-500 bar (3600-7200 psi)</b>	<b>104 bar/turn (1500 psi/turn)</b>