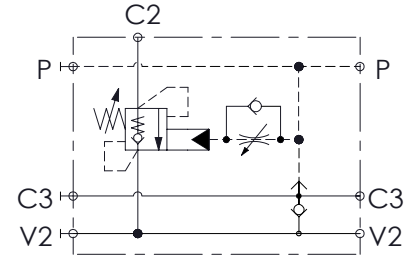
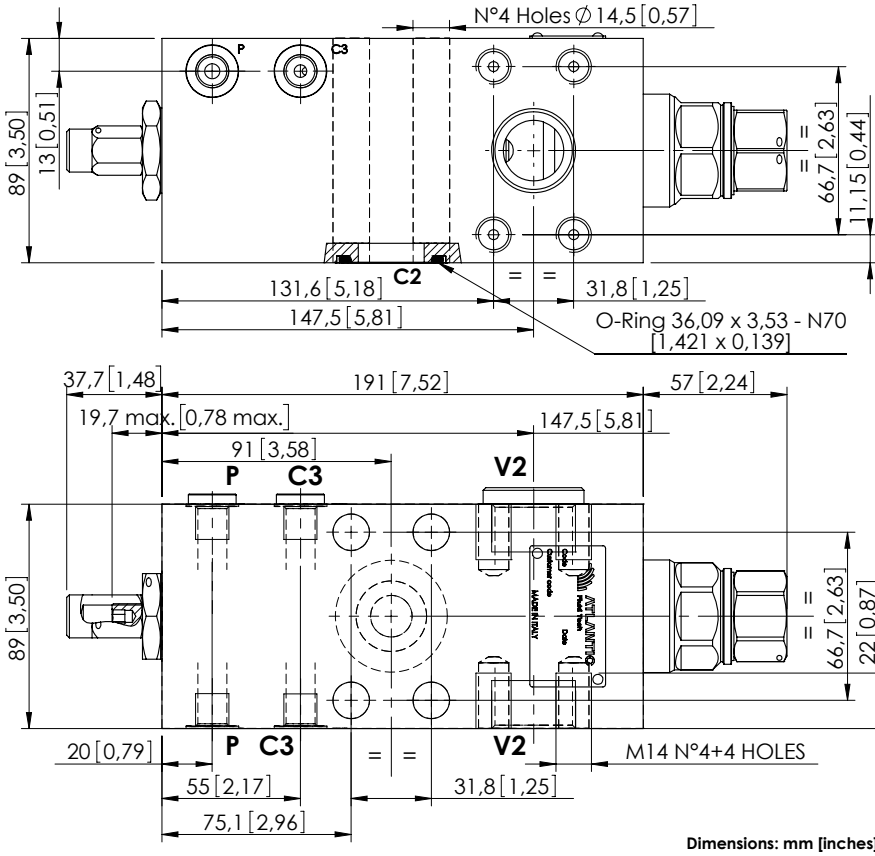


MBSN-300-AMSF

SINGLE ACTING
WITH BRAKE RELEASE



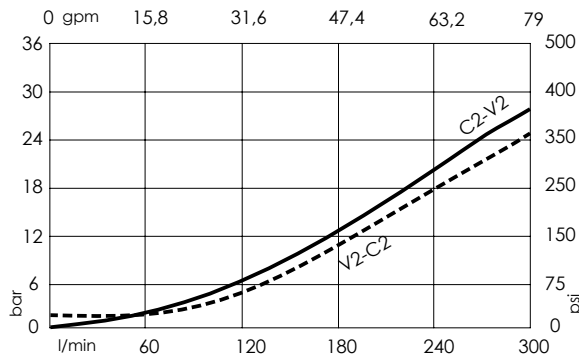
SPECIFICATIONS

| | |
|----------------------------------|---------------------------------------|
| Max. operating pressure: | 500 bar (7200 psi) |
| Rated flow: | 300 l/min (79 gpm) |
| Manifold: | Steel |
| Weight: | 10,93 kg (24,1 lbs) |
| Contamination class to ISO 4406: | See technical spec. |
| MTF _a : | 150 - 1200 years: See technical spec. |

NOTES

Setting: at least 1.3 times the load induced pressure.
For other configurations/quick codes not available in this catalogue page please consult factory

CURVES



ORDERING CODES

| Quick code | Description | Pilot ratio | Main ports size | Standard setting Q=5 l/min (1,3 gpm) | Adjustment range | Pressure increase |
|------------|---------------------------|-------------|--|---|--------------------------------|---------------------------------|
| MB000665 | MBSN-300-AMSF-13-S11-N500 | 13:1 | C2,V2 : 1-1/4" SAE 6000 Pil,C3 : G 1/4" | 500 bar (7200 psi) | 250-500 bar (3600-7200 psi) | 104 bar/turn (1500 psi/turn) |
| | | | | | | |
| | | | | | | |
| | | | | | | |
| | | | | | | |