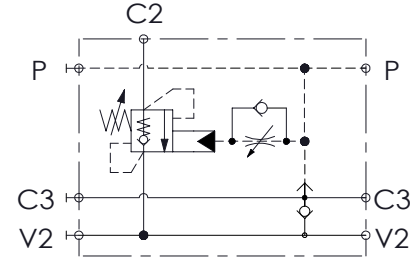
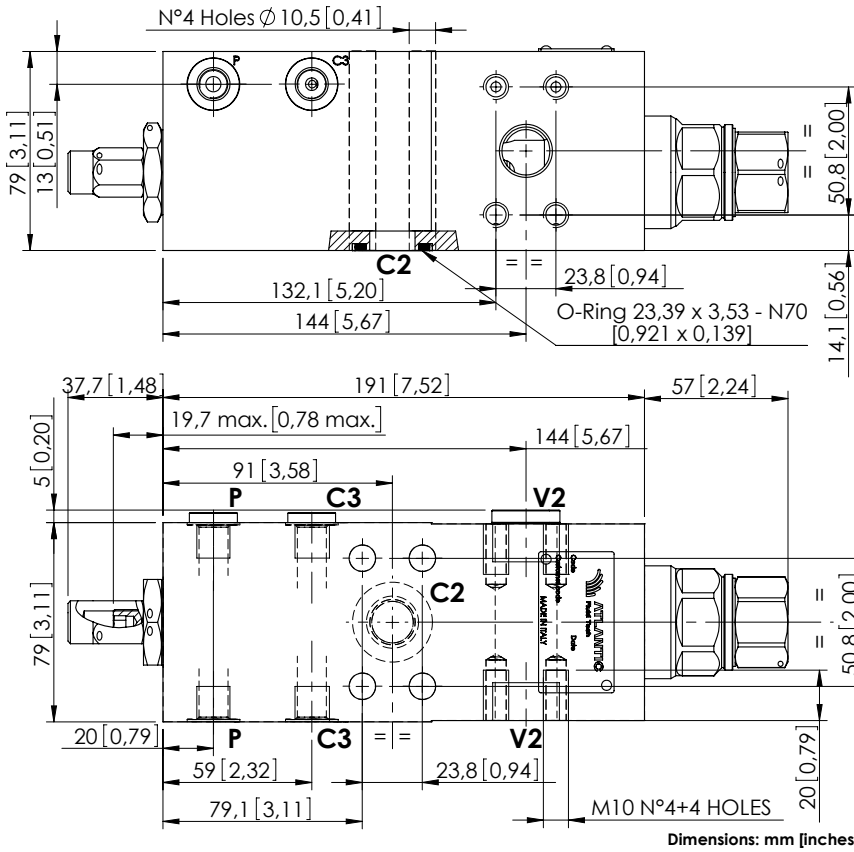


MBSN-250-AMSF

SINGLE ACTING
WITH BRAKE RELEASE



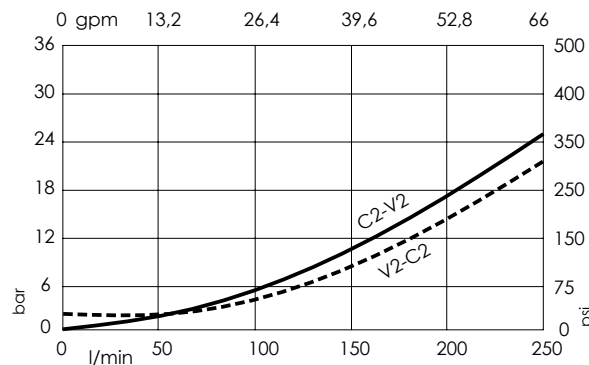
SPECIFICATIONS

Max. operating pressure:	500 bar (7200 psi)
Rated flow:	250 l/min (66 gpm)
Manifold:	Steel
Weight:	8,97 kg (19,89 lbs)
Contamination class to ISO 4406:	See technical spec.
MTF _a :	150 - 1200 years: See technical spec.

NOTES

Setting: at least 1.3 times the load induced pressure.
For other configurations/quick codes not available in this catalogue page please consult factory

CURVES



ORDERING CODES

Quick code	Description	Pilot ratio	Main ports size	Standard setting Q=5 l/min (1,3 gpm)	Adjustment range	Pressure increase
MB000663	MBSN-250-AMSF-13-S34-N500	13:1	C2,V2 : 3/4" SAE 6000 P,C3 : G 1/4"	500 bar (7200 psi)	250-500 bar (3600-7200 psi)	104 bar/turn (1500 psi/turn)