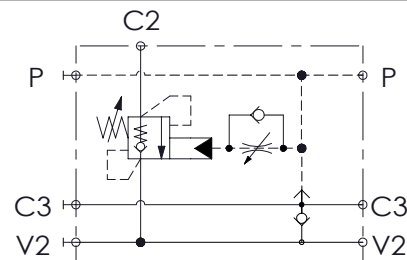
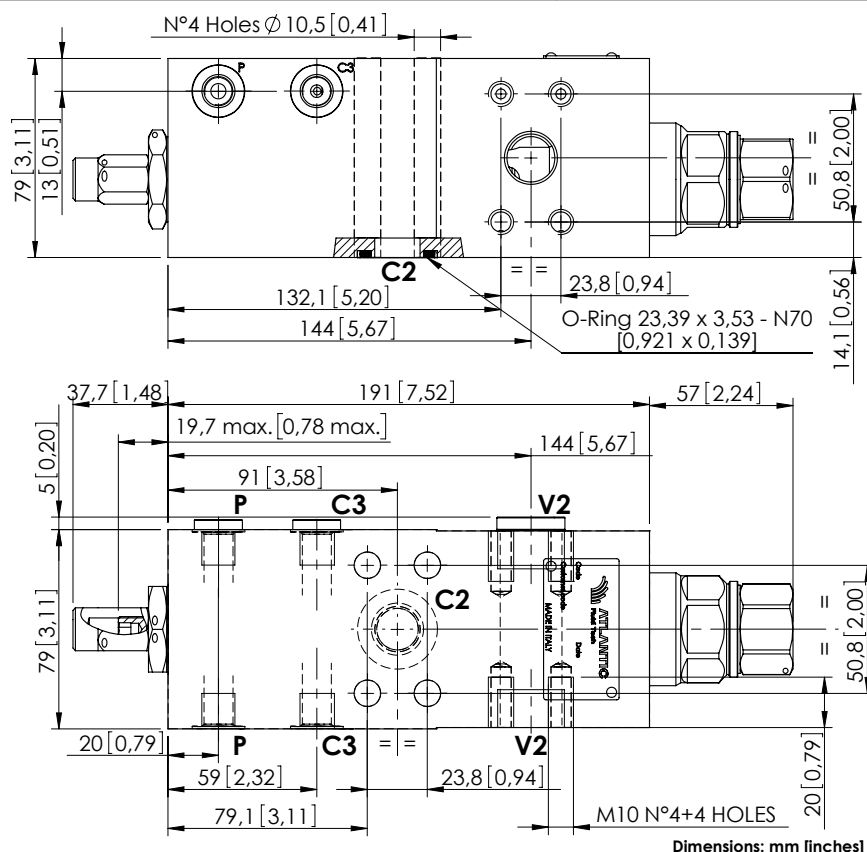


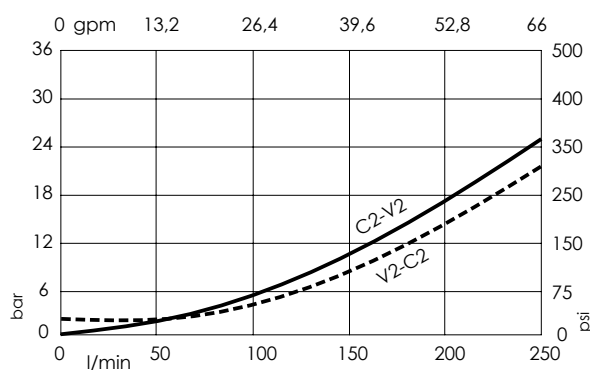
MBSN-250-AMSFSINGLE ACTING
WITH BRAKE RELEASE**SPECIFICATIONS**

Max. operating pressure:	500 bar (7200 psi)
Rated flow:	250 l/min (66 gpm)
Manifold:	Steel
Weight:	9,02 kg (19,89 lbs)
Contamination class to ISO 4406:	See technical spec.
MTFa:	150 years

NOTES

Setting: at least 1.3 times the load induced pressure.

For other configurations/quick codes not available in this catalogue page please consult factory

CURVES**ORDERING CODES**

Quick code	Description	Pilot ratio	Main ports size	Standard setting Q=5 l/min (1,3 gpm)	Adjustment range	Pressure increase
MB000663	MBSN-250-AMSF-13-S34-N500	13:1	C2,V2 : 3/4" SAE 6000 P,C3 : G 1/4"	500 bar (7200 psi)	250-500 bar (3600-7200 psi)	104 bar/turn (1500 psi/turn)