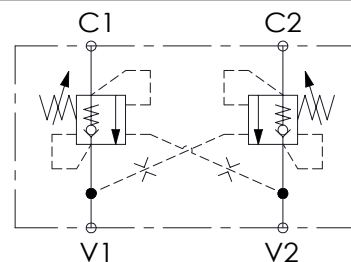
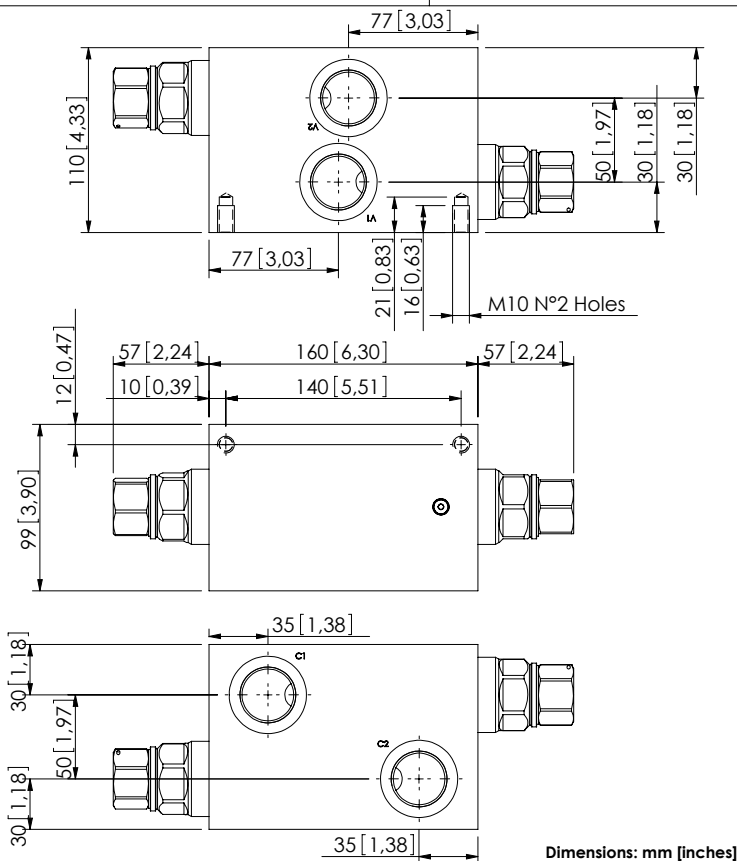


OVERCENTRE VALVE

MBDN-300-ZLNR

DOUBLE ACTING



SPECIFICATIONS

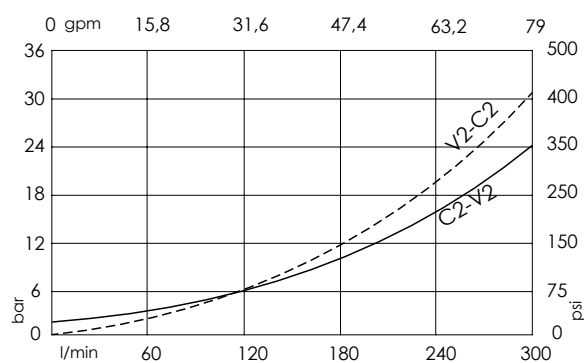
| | |
|----------------------------------|---------------------|
| Max. operating pressure: | 350 bar (5000 psi) |
| Rated flow: | 300 l/min (79 gpm) |
| Manifold: | Aluminium |
| Weight: | 5,4 kg (11,91 lbs) |
| Contamination class to ISO 4406: | See technical spec. |
| MTFa: | 150 years |

NOTES

Setting: at least 1.3 times the load induced pressure.

For other configurations/quick codes not available in this catalogue page please consult factory

CURVES



ORDERING CODES

| Quick code | Description | Pilot ratio | Main ports size | Standard setting Q=5 l/min (1,3 gpm) | Adjustment range | Pressure increase |
|------------|---------------------------|-------------|-------------------|---|-----------------------------|-----------------------------|
| MB000638 | MBDN-300-ZLNR-04-G10-N350 | 4:1 | V1,V2,C1,C2: G 1" | 350 bar (5000 psi) | 100-350 bar (1400-5000 psi) | 75 bar/turn (1100 psi/turn) |
| | | | | | | |
| | | | | | | |
| | | | | | | |
| | | | | | | |
| | | | | | | |