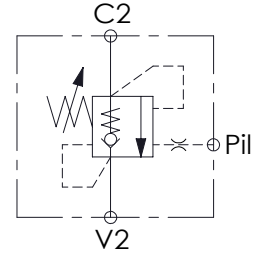
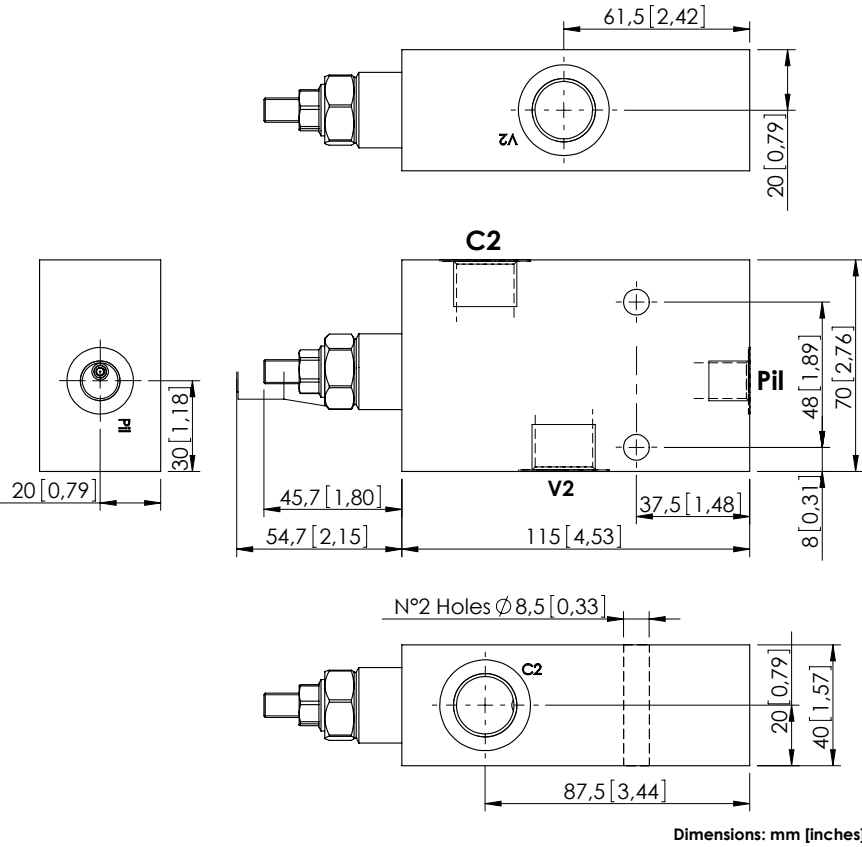


MBSN-060-ZLNA

SINGLE ACTING
IN LINE PORTS



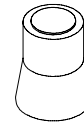
SPECIFICATIONS

Max. operating pressure:	350 bar (5000 psi)
Rated flow:	60 l/min (16 gpm)
Manifold:	Aluminium
Weight:	0,9 kg (1,98 lbs)
Contamination class to ISO 4406:	See technical spec.
MTF _a :	150 - 1200 years: See technical spec.

NOTES

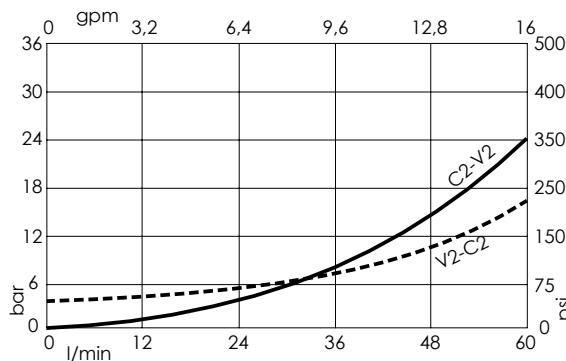
Setting: at least 1.3 times the load induced pressure.
For other configurations/quick codes not available in this catalogue page please consult factory

SEALING CAP



Ordering code:
AT000020

CURVES



ORDERING CODES

Quick code	Description	Pilot ratio	Main ports size	Standard setting (Q=5 l/min)	Adjustment range	Pressure increase
MB000579	MBSN-060-ZLNA-04-G12-N350	4,2:1	C2,V2: G 1/2" Pii: G 1/4"	350 bar (5000 psi)	110-350 bar (1600-5000 psi)	138 bar/turn (2000 psi/turn)
MB000580	MBSN-060-ZLNA-04-G12-N200	4,2:1	C2,V2: G 1/2" Pii: G 1/4"	200 bar (2900 psi)	60-210 bar (850-3000 psi)	62 bar/turn (900 psi/turn)
MB000581	MBSN-060-ZLNA-07-G12-N350	7:1	C2,V2: G 1/2" Pii: G 1/4"	350 bar (5000 psi)	85-350 bar (1200-5000 psi)	106 bar/turn (1500 psi/turn)
MB000582	MBSN-060-ZLNA-07-G12-N250	7:1	C2,V2: G 1/2" Pii: G 1/4"	200 bar (2900 psi)	40-250 bar (600-3600 psi)	46 bar/turn (650 psi/turn)