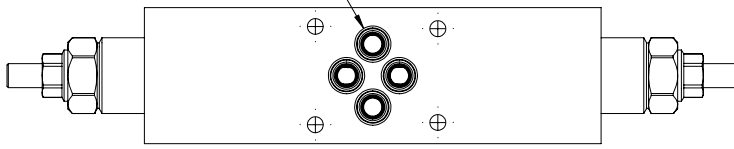


# MBDN-060-ZTNR

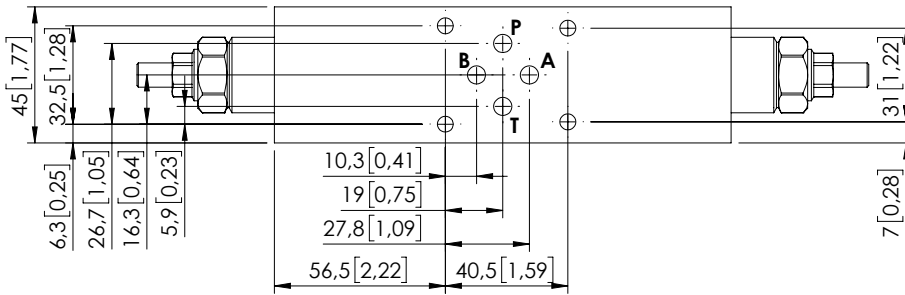
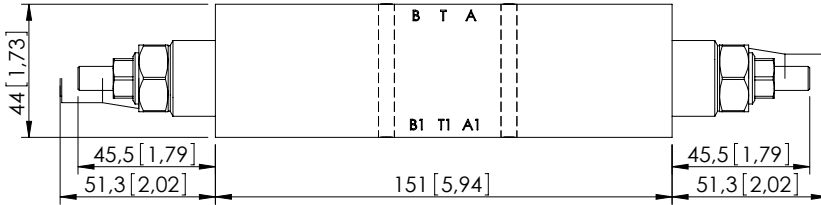
DOUBLE ACTING  
CETOP 3



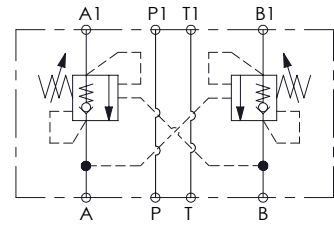
O-Ring 8,74x1,78 [0,34x0,07]



Ø 5,3 [0,21] N°4 Holes



Dimensions: mm [inches]



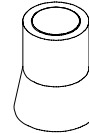
## SPECIFICATIONS

Max. operating pressure:	350 bar (5000 psi)
Rated flow:	60 l/min (16 gpm)
Manifold:	Aluminium
Weight:	1,03 kg (2.2 lbs)
Contamination class to ISO 4406:	See technical spec.
MTTFa:	150 - 1200 years: See technical spec.

## NOTES

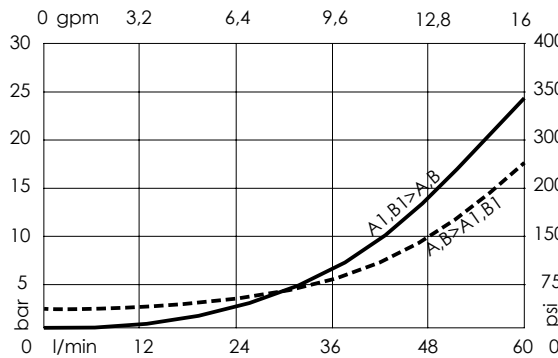
**Setting:** at least 1.3 times the load induced pressure.  
For other configurations/quick codes not available in this catalogue page please consult factory

## SEALING CAP



Ordering code:  
AT000020

## CURVES



## ORDERING CODES

Quick code	Description	Pilot ratio	Ports	Standard setting Q=5 l/min (1.3 gpm)	Adjustment range	Pressure increase
MB000517	MBDN-060-ZTNR-04-N06-N350	4,2:1	A,B,P,T: CETOP 3	350 bar (5000 psi)	100-350 bar (1400-5000 psi)	138 bar/turn (2000 psi/turn)
MB000546	MBDN-060-ZTNR-04-N06-N200	4,2:1	A,B,P,T: CETOP 3	200 bar (2900 psi)	60-210 bar (850-3000 psi)	62 bar/turn (850 psi/turn)