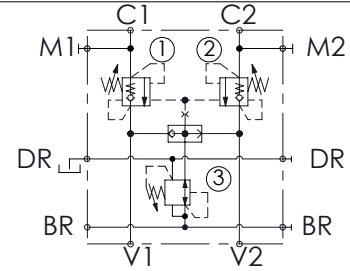
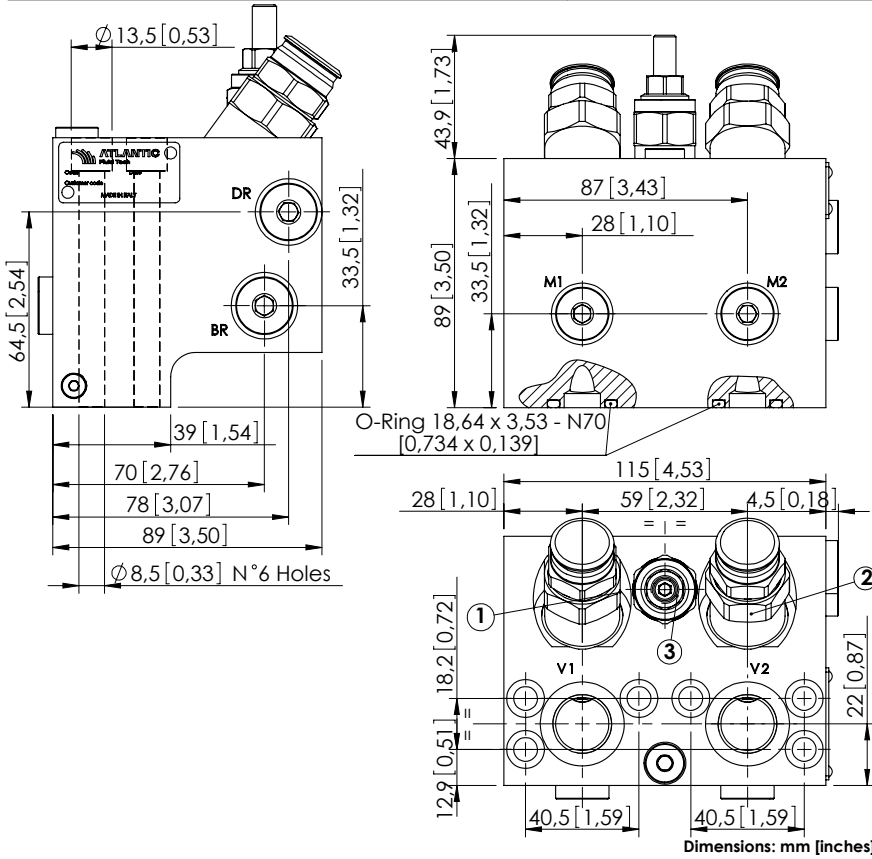


# MBDN-100-AMSR

OVERCENTRE  
WITH BRAKE RELEASE



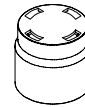
## SPECIFICATIONS

Max. operating pressure:	420 bar (6000 psi)
Rated flow:	100 l/min (26 gpm)
Manifold:	Steel
Weight:	5,82 kg (12,85 lbs)
Contamination class to ISO 4406:	See technical spec.
MTTFa:	150 - 1200 years: See technical spec.

## NOTES

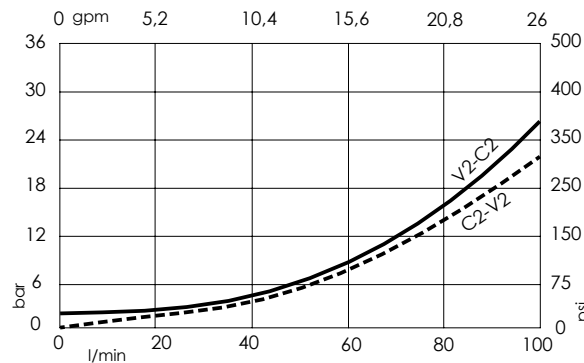
Setting: at least 1.3 times the load induced pressure.  
Designed for REXROTH A2FE 28-32 motors.  
For other configurations/quick codes not available in this catalogue page please consult factory

## SEALING CAP



Ordering code:  
PT000243

## CURVES



## ORDERING CODES

Quick code	Description	Pilot ratio	Main ports size	Standard setting Q=5 l/min (1,3 gpm)	Adjustment range	Pressure increase
MB000484	MBDN-100-AMSR-04-S12-N420	3,8:1	V1, V2: G1/2" C1, C2: 1/2" SAE 6000 DR, BR, M1, M2: G1/4"	① ② 350 bar (5000 psi) ③ 40 bar (550 psi)	① ② 100-350 bar (1400-5000 psi) ③ 10-60 bar (150-850 psi)	① ② 118 bar/turn (1700 psi/turn) ③ 6 bar/turn (85 psi/turn)
MB000766	MBDN-100-AMSR-08-S12-N420	8:1	V1, V2: G1/2" C1, C2: 1/2" SAE 6000 DR, BR, M1, M2: G1/4"	① ② 350 bar (5000 psi) ③ 40 bar (550 psi)	① ② 100-350 bar (1400-5000 psi) ③ 10-60 bar (150-850 psi)	① ② 132 bar/turn (1900 psi/turn) ③ 6 bar/turn (85 psi/turn)