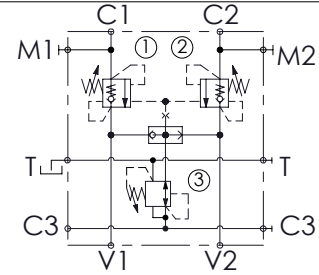
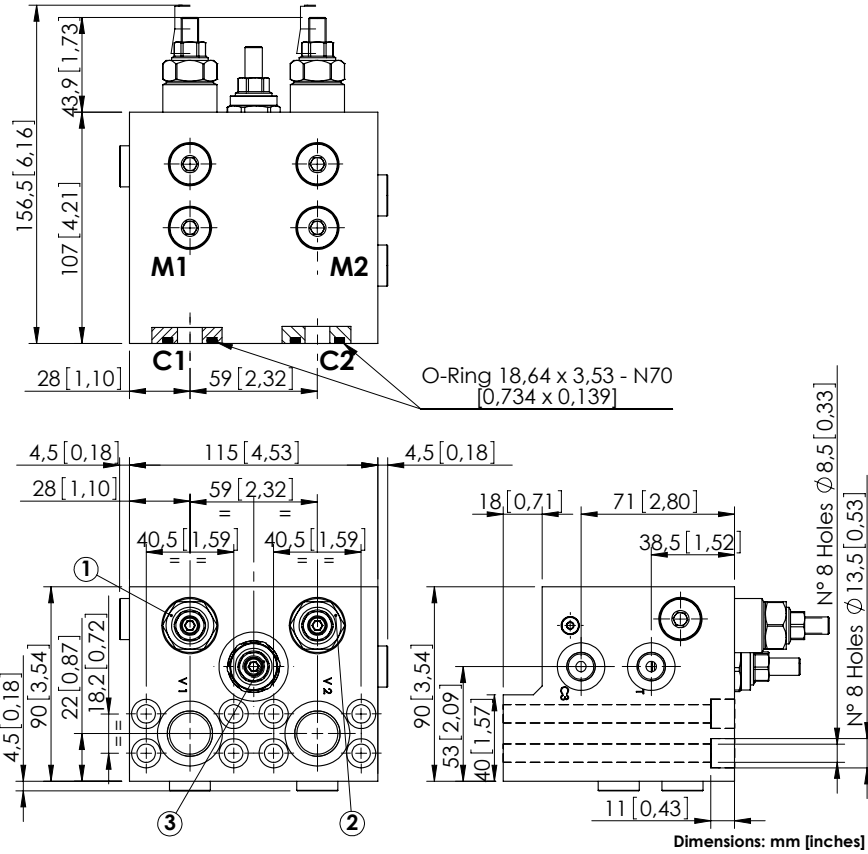


# MBDN-060-AMSR

OVERCENTRE  
WITH BRAKE RELEASE



## SPECIFICATIONS

Max. operating pressure:	420 bar (6000 psi)
Rated flow:	60 l/min (16 gpm)
Manifold:	Steel
Weight:	7,03 kg (15,52 lbs)
Contamination class to ISO 4406:	See technical spec.
MTF <sub>a</sub> :	150 - 1200 years: See technical spec.

## NOTES

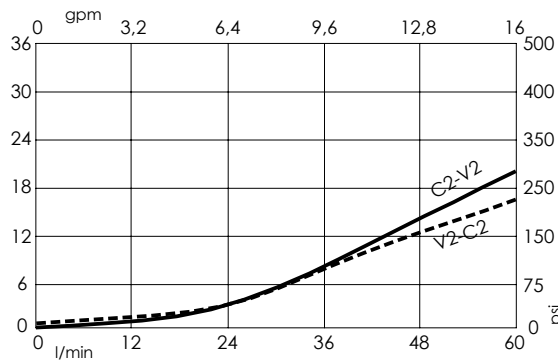
Setting: at least 1.3 times the load induced pressure.  
Designed for REXROTH A2FE 28-32 motors.  
For other configurations/quick codes not available in this catalogue page please consult factory

## SEALING CAP



Ordering code:  
AT000020

## CURVES



## ORDERING CODES

Quick code	Description	Pilot ratio	Main ports size	Standard setting Q=5 l/min (1,3 gpm)	Adjustment range	Pressure increase
MB000483	MBDN-060-AMSR-11-S12-N420	11:1	V1, V2: G1/2" C1, C2: 1/2 SAE 6000 C3, T, M1, M2: G1/4"	① ② 350 bar (5000 psi) ③ 50 bar (700 psi)	① ② 80-350 bar (1100-5000 psi) ③ 10-60 bar (150-850 psi)	① ② 161 bar/turn (2300 psi/turn) ③ 6 bar/turn (85 psi/turn)