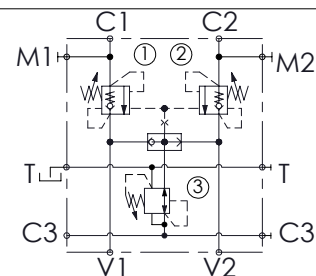
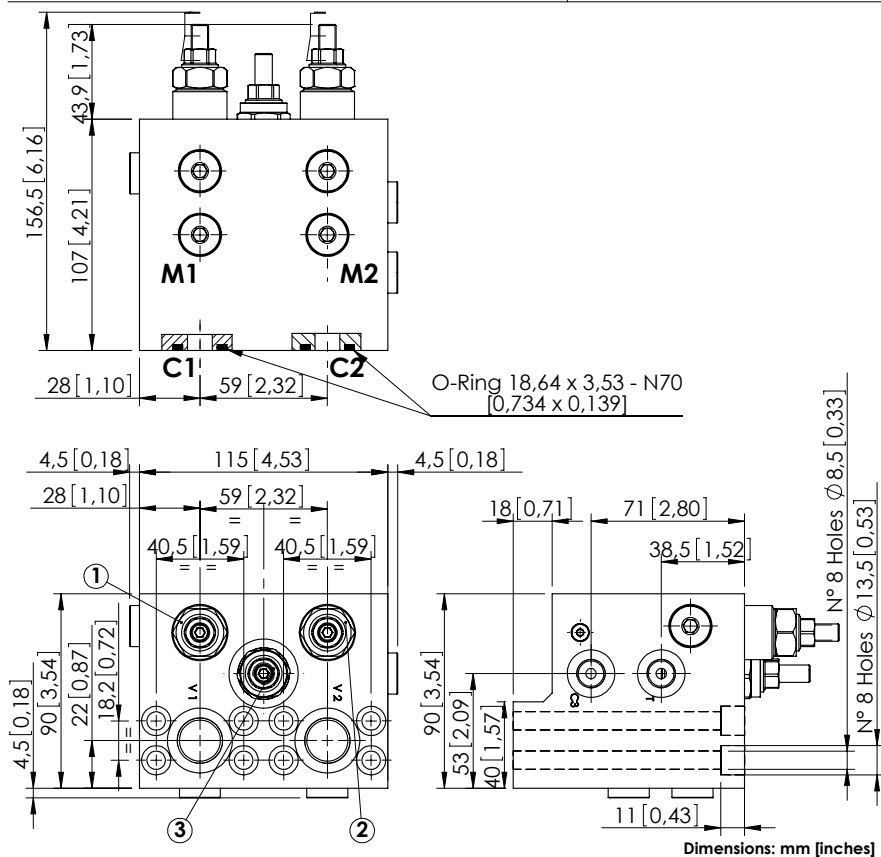


MBDN-060-AMSR

OVERCENTRE
WITH BRAKE RELEASE

SPECIFICATIONS

Max. operating pressure:	420 bar (6000 psi)
Rated flow:	60 l/min (16 gpm)
Manifold:	Steel
Weight:	7,03 kg (15,52 lbs)
Contamination class to ISO 4406:	See technical spec.
MTFa:	150 years

NOTES

Setting: at least 1.3 times the load induced pressure.

Designed for REXROTH A2FE 28-32 motors.

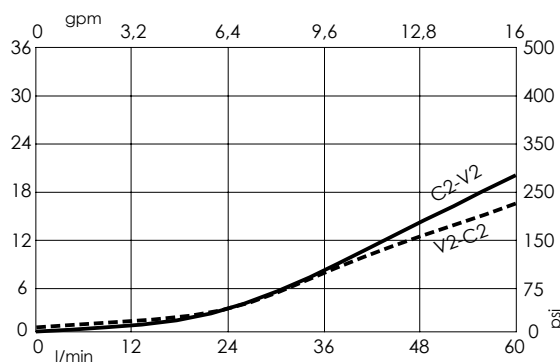
For other configurations/quick codes not available in this catalogue page please consult factory

SEALING CAP



Ordering code:
AT000020

CURVES



ORDERING CODES

Quick code	Description	Pilot ratio	Main ports size	Standard setting Q=5 l/min (1,3 gpm)	Adjustment range	Pressure increase
MB000483	MBDN-060-AMSR-11-S12-N420	11:1	V1,V2:G1/2" C1,C2:1/2 SAE 6000 C3,T,M1,M2:G1/4"	① ② 350 bar (5000 psi) ③ 50 bar (700 psi)	① ② 80-350 bar (1100-5000 psi) ③ 10-60 bar (150-850 psi)	① ② 161 bar/turn (2300 psi/turn) ③ 6 bar/turn (85 psi/turn)