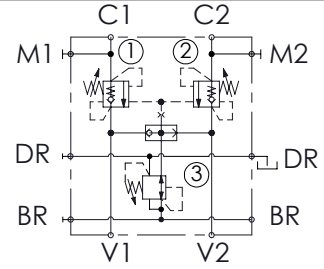
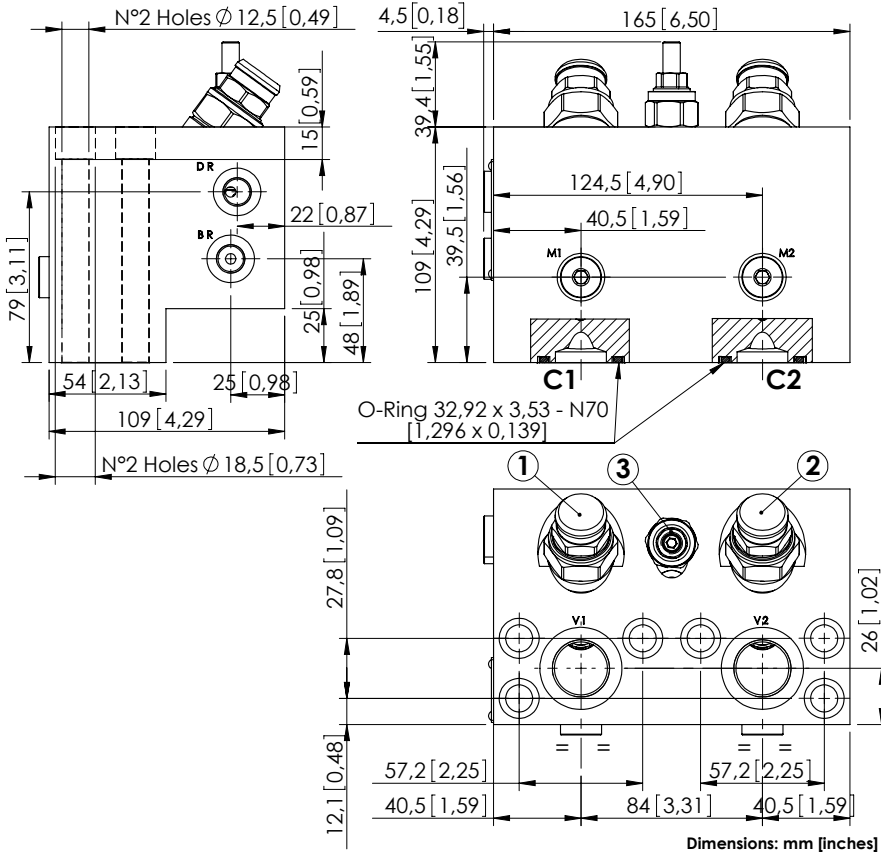


# MBDN-150-AMSR

OVERCENTRE  
WITH BRAKE RELEASE



## SPECIFICATIONS

Max. operating pressure:	420 bar (6000 psi)
Rated flow:	150 l/min (40 gpm)
Manifold:	Steel
Weight:	12,06 kg (26,61 lbs)
Contamination class to ISO 4406:	See technical spec.
MTF <sub>d</sub> :	150 - 1200 years: See technical spec.

## NOTES

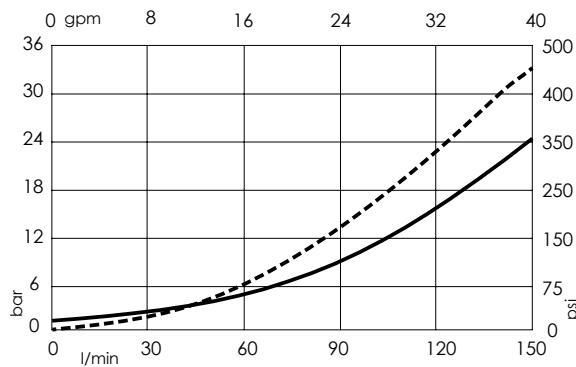
Setting: at least 1.3 times the load induced pressure.  
Designed for REXROTH A2FE 80-90 motors.  
For other configurations/quick codes not available in this catalogue page please consult factory

## SEALING CAP



Ordering code:  
ST000012

## CURVES



## ORDERING CODES

Quick code	Description	Pilot ratio	Main ports size	Standard setting Q=5 l/min (1,3 gpm)	Adjustment range	Pressure increase
MB000477	MBDN-150-AMSR-04-S10-N420	4:1	V1,V2:G 3/4" C1,C2: 1" SAE 6000 BR,DR:G 1/4"	① ② 350 bar (5000 psi) ③ 40 bar (600 psi)	① ② 100-350 bar (1400-5000 psi) ③ 10-60 bar (150-850 psi)	① ② 104 bar/turn (1500 psi/turn) ③ 6 bar/turn (85 psi/turn)